

County Gets 2800 Doe Licenses

An allotment of 2,800 licenses has been assigned to Lancaster County for the two day antlerless deer season, December 16 and 17, the Pennsylvania Game Commission announced this week.

By a resolution adopted at its meeting on June 22, the commission allocated a total of 204,504 licenses for the state

All licenses will be issued through county treasurers offices and applications for licenses will be available about mid-August from any licensing agent or from Game Commission Offices. Licenses will go on sale in early October.

In announcing the antlerless deer license allocation for the 1963 season, M. J. Golden, Game Commission Executive Director said, "Every year more deer are produced in Pennsylvania than are necessary to maintain a stable breeding herd. Normally the overwintering herd adds about 30% to its size with each fawn crop. Because seasons restricted exclusively to buck hunting take only about 12 percent of the annual increase, the controlled removal of a pre-determined number of antlerless deer is biologically sound

"As used in the Commission's deer management program, this approach to herd control and harvest has paid obvious dividends. Not only have the sportsmen of Pennsylvania continued to enjoy high-yield buck harvests (1959 - 38,270; 1960 - 38,776; 1961 - 38,705; 1962 - 42,266) but the deer themselves have benefited in the form of increased reproductive capacity, reduced winter mortality, and improved range conditions.

Bad Tires Cause Accidents,
Safety experts claim bad tires cause more than half of the highway accidents in America. Is your life worth more than four new tires?

Is Your Subscription Due?



What makes one pen of Chicks superior to another?
Livability!
General Vigor!
Body Size!
Efficiency!
and
Number of eggs laid!
Try

"HONEGGER LAYERS"

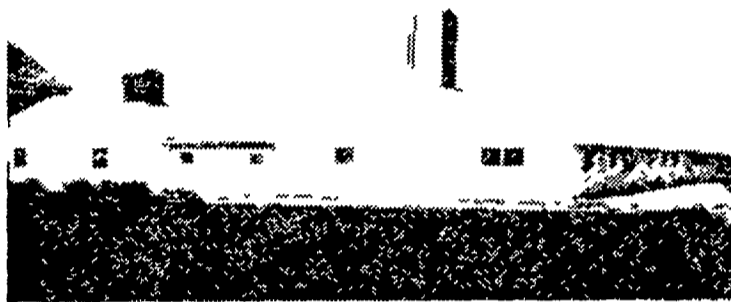
For Top Breeding

J. HOWARD MOORE
R. D. #1
LITITZ, PENNA.
Phone: 626-5408

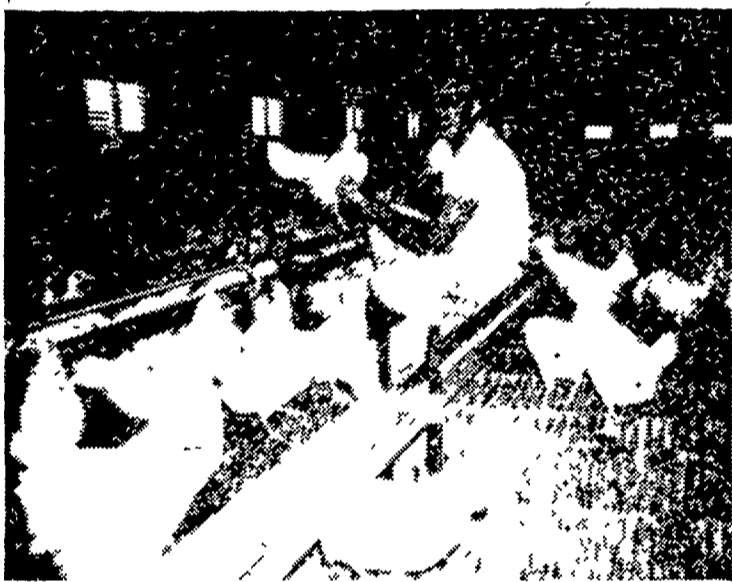
Windle's Hatchery
COCHRANVILLE, PA.
Phone: Atglen LY 3-5941

EARLY BIRD FEEDS and GOOD MANAGEMENT A Splendid Combination For Any Poultrymen

The other day we asked J. Harold Esbenschade, Manheim R. D. #4, how his 6000 bird flock was coming along in the new house he finished building last January.



View of Harold's new poultryhouse completed last January.



Harold checks his birds thoroughly several times daily.

Here is what Harold told us.

We housed these birds at 22 weeks of age January 14, 1963.

Our production is good. We had 11.20 per cent production in January, 58.20 in February, 85.70 in March, 81.08 in April and 81.52 in May.

Our feed conversion to date is 3.76 and feed cost per dozen up till now is 14.3c.

Our egg quality is good. On the eggs shipped so far 91.8% were grade A and AA, 4.1% grade B, 3.7% grade C and .4 blood spots.

All in all we like the Early Bird program and service very much.



Everybody helps with the job. Here is Mrs. Esbenschade with Denise (left) and Jay at the collection point of the automatic egg gathering belt.



Miller & Bushong, Inc.

Rohrerstown, Pa.
Ph. Lancaster 392-2145
(Area Code 717)

— *Finest Service Anywhere* —