



TOBACCO PLANTS ARE OFF TO A GOOD START on the Lester Weaver farm. With about two acres to plant yet, Weaver and son Larry look over the early planted field. Plants were slow in growing this year and the Weavers are looking for plants to buy for the remaining two acres. Larry does the farming on the 50 acre home farm with his father and younger brother, Leon. L. F. Photo.

● **Larry Weaver**

(Continued from Page 13)

elected president of the chapter, vice president of his high school class, and homeroom president. He won a bronze medal in the state project book contest, the National FFA Foundation award for public speaking and was third high in the county FFA livestock judging at Lampeter Fair.

In 11th grade he remained as chapter president and was elected vice president by the county association. He was elected president of his class and was inducted into the National Honor Society. He placed third in the state tractor driving at Penn State and later repeated his placing in the contest at the Harrisburg Farm Show.

During his last year in high school he continued as chapter president and won the Keystone Farmer Degree placing as runner-up to the Regional Star Farmer.

He became student council chairman and a commencement speaker. Along with other members of his vocational agriculture class, he attended the national FFA convention in Kansas City.

Larry has also been active in 4-H work currently serving as a member of the County Council Executive Committee.

During the year he will serve as vice president, he will represent the 12 county Region II of Southeastern Pennsylvania.

● **Vintage**

(Continued from Page 2)

dard 25.00-28.00, Utility 24.00-27.00.

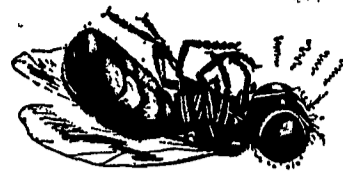
HOGS: 239. Barrows and gilts 50 higher.

U.S. 1-2 including few No. 3's 190-235 lbs. 19.00-19.35, Lot 1-2 213 lbs. 19.50.

Three lots 25-30 lb. Choice Feeder Pigs 9.00-11.75 per head.

Few U.S. 1-3 305-615 lb. Sows 11.10-14.00.

SHEEP: 46. Spring slaughter lambs steady. Choice and Prime 50-75 lbs. Spring slaughter lambs 21.50-23.00. Good and Choice 45-60 lbs. 19.00-21.50.



STONE DEAD IN SECONDS

with new **ORTHO FLY KILLER D**

CONTAINING **DIBROM**

Be ready this fly season... use ORTHO Fly Killer D containing DIBROM®, the remarkable insecticide discovery that kills flies in a matter of seconds without harm to cattle or feed.

It's a new fly killer registered for use around dairy cattle, while they are in the barn.

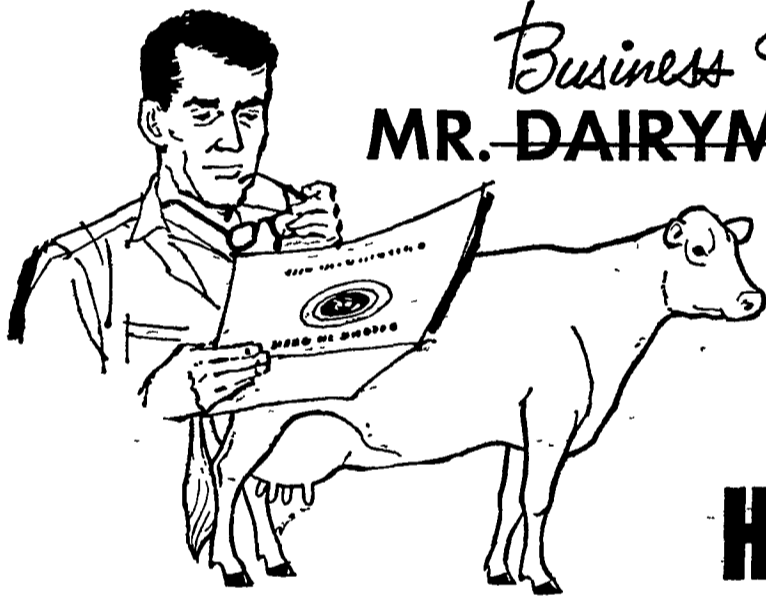
Concentrated ORTHO Fly Killer D is simple to mix... easy to use... equally effective as a spray, a wet bait or a dry bait. Get new ORTHO Fly Killer D (containing DIBROM) today at your dealer's.

— **ECONOMICAL** —
1 Pint makes 20 gal. spray \$2.95

P. L. ROHRER & BRO., INC.

SMOKETOWN

Ph. Lanc. 397-3539



HOW MUCH WOULD AN EXTRA TON OF MILK PER COW MEAN TO YOU?

Many dairymen who have challenged their herds — who have fed for more milk — have found that their cows can often produce as much as 2,000 extra pounds of milk per year when fed the PIONEER way.

way can mean big additional earnings for you. That's why thousands of successful dairymen rely on PIONEER feeds and feeding programs to help them milk out the total bred-in production capability of their cows — to help them get more profit from each cow.

If you're milking 100 head, an increase of 2,000 lbs. of milk per cow would mean 200,000 lbs. more milk per year for you to sell. At \$4/cwt., the extra milk would bring an extra \$8,000!

Challenge your herd! Find out how good your cows really are. Stop in soon and talk over your production problems with us. Remember, there's a PIONEER feeding program to fit your need.

Management for profit the PIONEER

Joseph M. Good & Sons

Leola — Quarryville

