

**● For The Farm Wife**  
(Continued from Page 9)

Salads are always a must for a picnic or patio supper

- 1/4 cup lemon juice
- 1 clove garlic, minced
- 1 teaspoon salt
- 1/2 teaspoon thyme
- 1/4 teaspoon oregano

**SHRIMP 'N' SHELL SALAD**

- 8 ounces medium macaroni shells
- 1 pound cooked shrimp, drained and cut in half
- 1 1/2 cups cut green beans, cooked and drained
- 1/2 cup purple onion rings (1 small onion)
- 2 tablespoons chopped pimiento
- 1/2 cup oil

Cook macaroni in boiling salted water until tender, yet firm, 12 to 14 minutes. Drain and rinse with cold water. Meanwhile, mix shrimp, green beans, onion and pimiento in large bowl. Blend oil, lemon juice, garlic, salt, thyme and oregano thoroughly in small bowl. Pour over shrimp and vegetables. Add macaroni shells. Mix to coat macaroni, shrimp and vegetables with

dressing. Cover and refrigerate at least one hour. 4 to 6 servings.

**LAMPETER 4-H ELECTS LINDA WELK**

Linda Welk, daughter of Mr. and Mrs. Leroy Welk, Strasburg R1, was elected to represent the Lampeter-Strasburg 4-H Homemaking club in the county Posture Queen contest at a recent meeting in the home of Mr. and Mrs. Elvin Hess, Jr., Strasburg R1.

The club girls made and ate custard and a carrot and raisin salad and concluded the meeting with games.

Next meeting of the club will be held on July 2, at the Hess home.

**CHECKERBOARD**

**service bulletin**

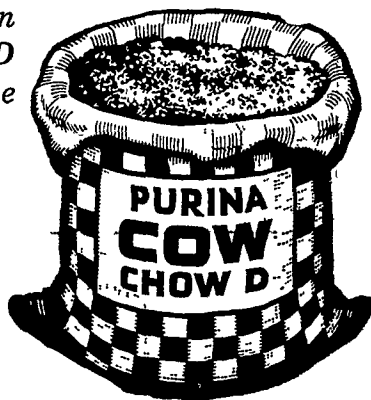


**Reduce cost of producing milk!**  
**Purina Cow Chow D**  
is built to help you get up to one ton more milk per cow.

Good dairymen know that the most economical milk comes from their highest producing cows... and an extra ton of milk per cow can actually reduce overall cost of production. That's why Purina developed high-efficiency Cow Chow D... to help make more milk at lower cost. Long range feeding tests at the Purina Dairy Center proved this point.

No wonder so many New York dairymen are turning to Cow Chow D... to help them get up to an extra ton of milk That could be the profit ton this year! Why wait? Start your herd up the road to top production with Purina Cow Chow D.

Ask for more information on Purina Cow Chow D at our Store with the Checkerboard Sign.



John B. Kurtz  
Cedar Lane

James High  
Gordonville

Wenger's Feed Mill, Inc.  
Rheems

Ira B. Landis  
Valley Road, Lancaster

John B. Kurtz  
Ephrata

Whiteside & Weicksel  
Kirkwood

S. H. Hiestand & Co.  
Salunga

J. H. Reitz & Son, Inc.  
Lititz

John J. Hess, II  
Intercourse - New Providence

Warren Sickman  
Pequea

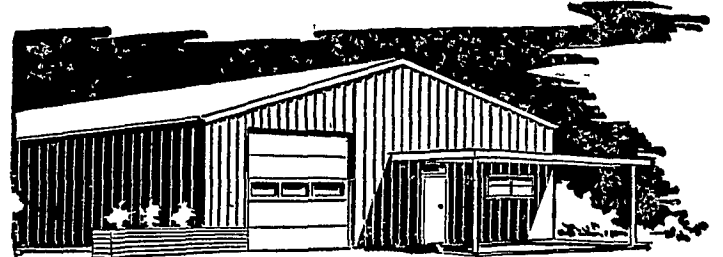
John J. Hess, II  
Kinzers - Vantage

- FIELD BROME
- RYE GRASS

**REIST SEED CO.**  
Mt. Joy 653-3821

**LOOK to SHARON**

FOR THE ANSWER TO YOUR INDUSTRIAL... COMMERCIAL BUILDING NEEDS



- \*Sturdy, Clear Span Framing
- \*Exclusive Trim Feature
- \*Attractive... Colorful
- \*Simple To Erect
- \*Reasonable Package Prices

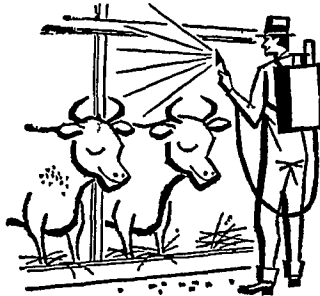
CALL US... WE WILL GLADLY DISCUSS YOUR NEEDS... NO OBLIGATION

**CALEB M. WENGER**

R. D. 1 Drumore Center KI 8-2116 QUARRYVILLE, PA.

**Lancaster Farming Ads Pay!**

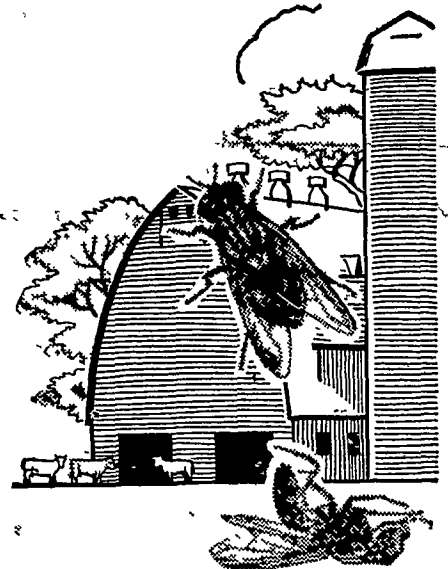
**KILL FLIES**



Use These **Fly Killers...**

... DIRECTLY ON ANIMALS

- ORTHO DAIRY AND STOCK FLY SPRAY  
Wet hairs on dairy animals  
1 gal. \$1.98
- MARLATE 50  
Use as a dry rub except on dairy animals  
4 lb. bag \$3.62
- KORLAN 24E  
Use with fuel oil 20 to 1 on back rubbers.  
\$10.50 gal.
- KORLAN 24E as a direct spray on beef animals, horses and sheep.  
1 gal. in 25 gallons of water \$10.50 gallon.



... IN BUILDINGS

- SNIP FLY BANDS  
1 band for each 100 sq. ft. of ceiling space — lasts all season.  
\$1.39 each.
- DOW DAIRY BARN AND LIVE-STOCK SPRAY GUN KIT  
Makes spraying easy. Just attach gun to garden hose and spray. Gun and 4 pints Korlan 24E only \$10.95  
6 pints refill kits \$6.95  
Korlan 24E 1 gal. can \$10.50
- ORTHO DIBROM FLY SPRAY  
Ready to use — new for 1963. Just \$2.75 per gal.
- LETHALAIRE BOMBS  
For easy, economical fly control in dairy barns and milk houses.  
D-300 5 lb. cylinder \$15.50 refill.
- COSSMAN FLY CAKES  
Lasts for months — just put cakes on floors and window sills: packed 10, 2 oz. cakes per box only 60¢ per cake.



See Your Dealer Or

**J. C. Ehrlich Chemical Co., Inc.**

Distributor

736 - 738 East Chestnut St., Lancaster

Ph. 397-3721