



SHOW HEIFERS GET SOME TRAINING for the benefit of the county extension agent. Linda and Donna Eshleman, left to right, pose their Ayrshire heiferneth Eshleman looks on. Club members Plastow, far right, as their father, Kenneth Eshelman looks on. Club members rely on parents and leaders for help with project calves, and this was no exception. Mr. Eshleman lent a hand in posing the heifers and stood by to help keep them in place for the photographer. L. F. Photo.

● **Extension Agent**

(Continued From Page 10)

Again Plastow checked and scored the record books and checked the girls' knowledge of management practices. Sister Sandra was not at home, but her heifer was also pointed

out to us.

Eshleman, a leader in the county Ayrshire-Jersey-Brown Swiss 4-H club, is planting Pen Bel 69 tobacco, and was anxious to get it in the field early, but he took time out to help the girls show their heifers

Over lunch we discussed

Plastow's accomplishments since he came to the county. He has coached three state championship dairy judging teams and had one team go all the way to fourth place in

national competition at the National Dairy Cattle Congress, (Waterloo, Iowa, in 1961. He had coached the Northampton County team which won the state championship the year he came to Lancaster

He has coached three state championship dairy demonstration teams and saw one of them win a blue ribbon at the Waterloo show. The other two teams attended the National Dairy Conference at Chicago, but did not enter national competition.

In 1954 he escorted the Pennsylvania 4-H livestock judging team to the national 4-H Club Congress in Chicago. He has attended the National County Agents convention in Philadelphia, Huston, Texas, Miami Beach, New York City, and Las Crus, New Mexico. In 1957 he was advanced to the position of Associate County Agent.

Tobacco planting was again under way when we stopped at the farm of Jesse Balmer, Lititz R4. Young Jesse and his sister, Cynthia, both first year members were anxious for us to see their Guernsey calves, and brought books and questions for the county agent to check and answer.

After I took a picture of the heifers and let a cow push me against a doorway, breaking the camera, we were on our way again.

I took another picture, holding the camera view finder in place with my third hand, of the Jacob Bollinger family at Lititz R4

John Bollinger brought out his first project heifer for our inspection and Nancy Bollinger brought her first calf heifer off pasture for us to see. Books were again checked and Nancy had some questions about the dairy demonstration she will present with the help of Nancy Stoltzfus, Ronks R1

An afternoon appointment with the dentist cut short our

afternoon ride, but as we headed back toward Lititz I asked Plastow what he likes most about his work. "I get a lot of satisfaction out of working with youth, and I have a lot of admiration for the youth of Lancaster County," he said

"Of course, I am proud of the DHIA in the county, and I think a lot of the credit is due to close-knit family operations where the entire family participates in the dairy enterprise," he added.

Plastow went back to clear up some details and be ready for the following day when a specialist in Agricultural Engineering would be in the county to work out some problems in building remodeling. I hurried to keep my date with the dentist's drill

As the drill shrieked its path up behind my left eye, I thought back on the day with the extension worker. This, too, is agriculture, I thought.

● **Barley Support**

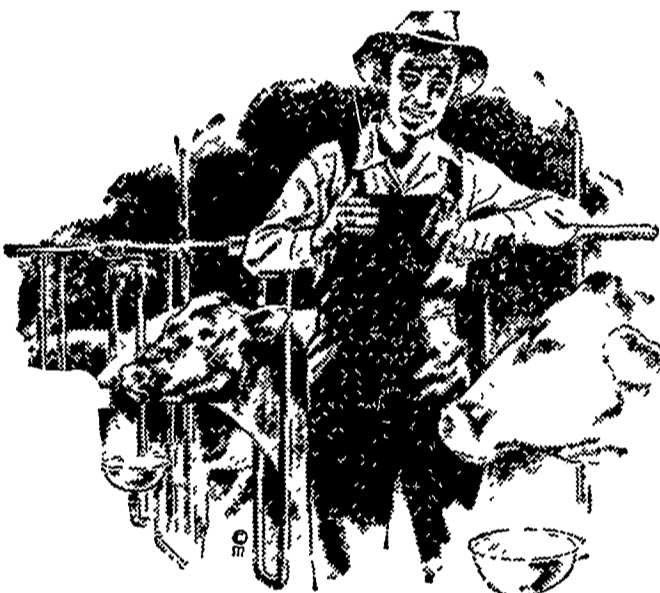
(continued from page 1) kind was available under the 1962 feed grain program

The basic loan rate is for barley grading No 2 or better. It is adjusted by discounts for grade and quality to determine support prices for individual producers. The discount schedule is the same as for the 1962 crop

The Chairman reminded growers that price support on 1963-crop barley will be available to those producers who participate in the 1963 feed grain program by diverting at least 20 percent of their total barley, corn, or grain sorghum acreage to conserving use

The United States lost only one aircraft carrier by enemy action in World War 2 — the U.S. Block Island, near the Azores, by a German submarine

FLORIN DAIRY RATIONS



TO SUIT EVERY NEED!

Get Maximum Production With **FLORIN DAIRY FEEDS**

- Unexcelled in quality
- Taste appealing in texture
- Developed over years of experience

Allow Us to put an Efficient Dairy Program to Work on Your Farm

Call Mount Joy 653-2411

Wolgemuth Bros., Inc.
Florin, Penna.

Livestock Auction Market

EVERY TUESDAY

Starting Promptly at 1:30 p.m.

Starting with bulls, steers, heifers, cows, hogs and calves.

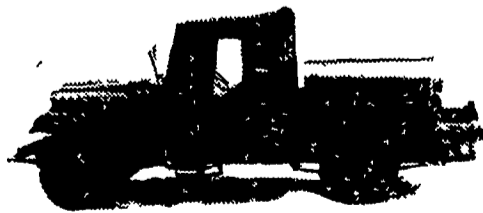
We get top \$\$ for your Livestock
Give us a call — HI 2-4181

Vintage Sales Stables, Inc.

VINTAGE, PA.

Frank Dussinger, Manager

Now That The Rain Has Come . . .



TOP DRESS PASTURES WITH AERO UREA CALL US TODAY

ORGANIC PLANT FOOD CO.

Grofftown Road Near Waterworks
Phone Lancaster 392-1963 or 392-0374