

# Broilers Down One Cent Prices Gain; Demand Is Good

Live broilers at the Lancaster Poultry Center this week were down nearly a cent a pound as 96,350 head in 16 lots changed hands at prices ranging from 15.2 to 15.7 for a sale average of 15.30. Last week's average was 16.22.

A lot of 500 roasters sold for 26, while three lots of leghorn fowl containing 2,950 head brought 10.1 to 10.4. Three lots of 2,400 heavy fowl sold at 16.2 to 16.5 and a lot of 105 males brought 8.5 and 8.6.

All birds on offer were sold, but one lot of 400 pullets was withdrawn prior to the sale.

The June 13 auction offered and sold a total of 102,305 head in 26 lots.

Following is the complete sale report with lot number, seller, grower in parenthesis, amount and breed, age in weeks and days, buyer and price.

CODE: WV-White Vantress, H-F-Heavy Fowl, P-Pullets, C-Cockerels, WMT-White Mountain, CCX-Cobbs Cornish Cross, L-F-Leghorn Fowl, VAA-Vantress Arbor Acre.

1. Miller & Bushong (Har-old Hollinger), 1800 WV, 8-2, Carl B. Risser, 15.7; 2. F. M. Brown & Sons (Leon Weber), 5000 WV, 9-1, John N. Thomas, 15.3; 3. Same, 5000 WV, 9-1, Daniel K. Good, 15.4; 4. Amos K. King, 900 H-F, 15 mo., W. C. Mellinger & Son, 16.2; 55 Males, 15 mo., Daniel K. Good, 8.5, 5. Philhaven Hospital Farm, 900 L-F, V. J. Koser Co. Inc., 10.1.

6. M&B (Edwin L. Funck), 4200 WV, 8-2, Starr Poultry, 15.2; 7. Same, 3800 WV, 8-2, Carl B. Risser, 15.4; 8. John O. Moyer, Jr., 400 WVP, 15-0, WITHDRAWN PRIOR TO SALE; 9. Same, 500 WVC, 15 mo. Marvin Sweigart, 26.0, 10. Funk Bros. Inc. (Elvin Bleacher), 4450 WMT, 9-0, Daniel K. Good, 15.4.

11. M&B (John L. Herr), 11,000 CCX, 8-2, Starr Poultry, 15.4; 12. Same, 8900 WV, 8-2, Starr Poultry, 15.2; 13. Same (Clarence Shenk, Jr.), 5000 WV, 8-1, H. W. Long-acre, Inc., 15.2; 14. Same, 5000 WV, 8-1, H. W. Long-acre, Inc., 15.3; 15. P. Kenneth Witmer, 400 L-F, V. J. K. Good, 15.3; 18. Aaron Bru-

Delmarva reported live broiler prices increased slightly during the 24 hour period ending 10:30 Friday morning. Demand was good for the light offerings.

Prices at farms during the period ranged 14.4 to 15.3 for 840,500 head including 420,000 head sold at Thursday's auction at Selbyville, Del.

Estimated slaughter by eastern shore processors for the week end was 715,000 head compared to the 845,000 head last week end.

The Delmarva broiler-feed ratio for the week ending June 7 was down two points from the previous week at 3.2. Broilers during the week averaged 15.73 and mash cost the grower \$99.37 per ton. During the previous week broilers were 16.65 and mash cost \$99.43.

Koser Co. Inc., 10.1. 16. M&B (Lester Weaver), 6900 WMT., 7-3, Daniel K. Good, 15.2; 17. Same (Melvin Groff), 3900 WV, 8-1, Daniel K. Good, 15.3; 18. Aaron Bru-

# Weekly New York Egg Mkt.

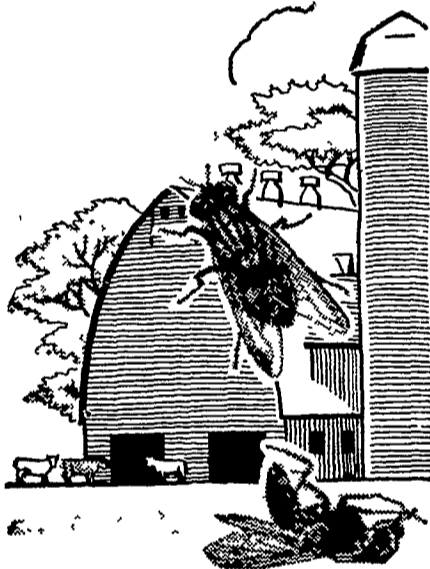
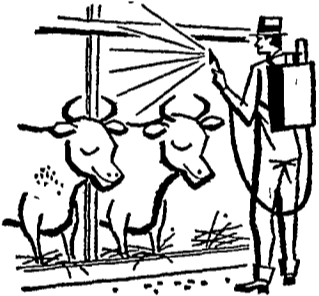
From Monday, June 10th to Friday, June 14th

	Mon.	Tues.	Wed.	Thurs.	Fri.
<b>WHITE</b>					
Fcy. Hywts. 32	32	32 1/2	32 1/2	32 1/2	32 1/2
Fcy. Hywts. 31 1/2	31 1/2	32-32 1/2	32-32 1/2	32-32 1/2	32-32 1/2
Fcy. Med. 24 1/2	26-26 1/2	27-27 1/2	25-25 1/2	25-25 1/2	25-25 1/2
No. 1 Med. 24	26	27	25-25 1/2	25-25 1/2	25-25 1/2
Pullets 20	21	22	21	21	21
Peeweese 16	17	18	18	18	18
<b>BROWN</b>					
Fcy. Hywts. 32	33	33	33	33	33
Fcy. Hywts. 31 1/2	32	32 1/2	32 1/2	32 1/2	32 1/2
Fcy. Med. 24	26	27-27 1/2	26	25-25 1/2	25-25 1/2
Pullets 20	21	22	22	22	22
Peeweese 16	17	18	18	18	18
<b>MIXED</b>					
Fcy. Hywts. 30	31	31 1/2	31 1/2	31 1/2	31 1/2
No. 1 Med. 24	26	27	25 1/2	25 1/2	25 1/2
Pullets 20	21	22	21	21	21
Standards 29	29 1/2	30	29-29 1/2	29-29 1/2	29-29 1/2
Checks 25 1/2	25 1/2	26	25 1/2-26	25 1/2-26	25 1/2-26

TREND: Market continues unsettled with strong selling interest in order to clear current arrivals and buying interest spotty.

Copyrighted 1963 By Urner-Barry Co.

# KILL FLIES



## Use These Fly Killers...

### ... DIRECTLY ON ANIMALS

- ORTHO DAIRY AND STOCK FLY SPRAY  
Wet hairs on dairy animals  
1 gal. \$1.98
- MARLATE 50  
Use as a dry rub except on dairy animals  
4 lb. bag \$3.62
- KORLAN 24E  
Use with fuel oil 20 to 1 on back rubbers.  
\$10.50 gal.
- KORLAN 24E as a direct spray on beef animals, horses and sheep.  
1 gal. in 25 gallons of water \$10.50 gallon.

### ... IN BUILDINGS

- SNIP FLY BANDS  
1 band for each 100 sq. ft. of ceiling space — lasts all season.  
\$1.39 each.
- DOW DAIRY BARN AND LIVE-STOCK SPRAY GUN KIT  
Makes spraying easy. Just attach gun to garden hose and spray. Gun and 4 pints Korlan 24E only \$10.95  
6 pints refill kits \$6.95  
Korlan 24E 1 gal. can \$10.50
- ORTHO DIBROM FLY SPRAY  
Ready to use — new for 1963.  
Just \$2.75 per gal.
- LETHALAIRE BOMBS  
For easy, economical fly control in dairy barns and milk houses.  
D-300 5 lb. cylinder \$15.50 refill.
- COSSMAN FLY CAKES  
Lasts for months — just put cakes on floors and window sills: packed 10, 2 oz. cakes per box only 60¢ per cake.



See Your Dealer Or  
**J. C. Ehrlich Chemical Co., Inc.**

Distributor

736 - 738 East Chestnut St., Lancaster

Ph. 397-3721

baker, 1650 L-F, 18 mo., V. Good, 15.3, 25. Longenecker's J Koser Co., Inc, 10.4, 19. Good, 16.3  
M&B (Richard Blessing), 4000 26 John D Stoltzfus, 800 WV, 8-2, Starr Poultry, 15.2; H-F, Marvin Sweigart, 16.5; 20. D. E. Horn & Co (Parke 50 Males, Marvin Sweigart, 8.6. Herr), 5000 WV, 9-2, Starr Poultry, 15.2.

21. Same, 5000 WV, 9-2, Starr Poultry, 15.2, 22 Same, \$78,000 more than the student who attends college but doesn't graduate. The average college graduate earns \$103,000 more than the average high school graduate.

## GREAT NEWS FROM WIRTHMORE!

For the first time anywhere you now have a choice of feeds designed especially for different weight birds.

### NEW!

Hi-Ener-G 16  
Layer

Just right for medium-weight strains.

(Over 5 lbs. mature weight)

### NEW!

Hi-Ener-G 17  
Layer

Just right for light-weight strains.

(Under 5 lbs. mature weight)

Each of these new feeds is designed to supply the right balance of minerals, protein and energy to fit the requirements of different production strains.

Over three years of Wirthmore research have proved conclusively that lightweight layers and mediumweight layers have quite different nutritional requirements for a given amount of feed. That's why we developed these two new feeds so you can give your birds the one that they need.

Get the story from your Wirthmore distributor or serviceman. Try the feed that's right for your birds. We're convinced that you'll get top performance, maximum return over feed costs. (Available as mash, crumbles or pellets).

Attention, Breeders! You can't beat Wirthmore Complete Breeder for meat-type strains and Wirthmore Hi-Ener-G Breeder for production-type strains.

**J. K. Stauffer & Son**      **Clem E. Hooper**  
Lawn and Bellaire      Intercourse  
665-3121 — 367-2321      768-3431

**Paul M. Ressler & Son**  
Paradise      687-6292