

Crop Summary Lack Of Rain Still Limiting Growth

Light rains in the county continued to be a problem to farmers. The rains were not heavy enough to break the long dry spell, but were enough to bring hay making to a halt for several days.

Pastures continued to do poorly because of lack of moisture, and corn fields were showing a poor color. Tobacco plants are making poor growth in many beds and farmers report that transplanting will probably be late.

Soil moisture conditions in most sections of the state were greatly improved during the week ended May 27, according to the Pennsylvania Crop Reporting Service. Only south central and southeastern counties remain dry. Widespread frost on Friday morning, May 24, damaged vegetable crops in many areas, and did some scattered damage to fruit, potatoes, and tobacco. Cool weather was impeding normal growth of field crops.

Farmers in the Southeast started to make hay and grass silage. Early plantings of corn and potatoes were being cultivated and spraying of hay fields and orchards continued.

Nearly three-fourths of the state's corn acreage has been planted. Bailey has headed and wheat was beginning to head in the South, with most of the wheat crop in the boot stage in other sections. Many oat stands are spotty.

Haymaking had started in the Southeast, but yields were below normal. Pastures were still below average in most regions.

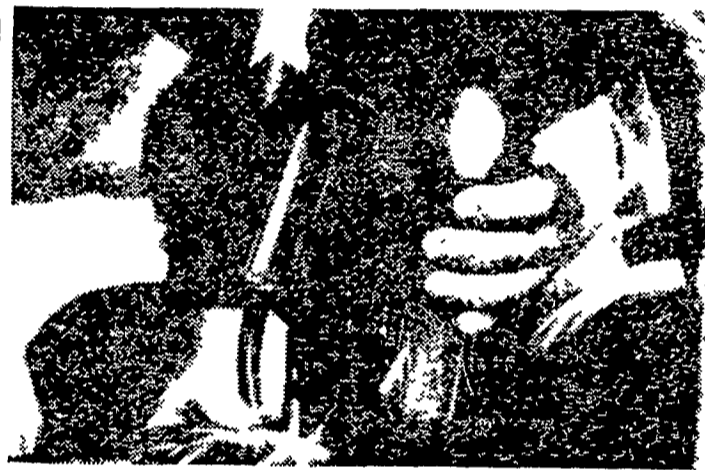
Tomatoes were extensively damaged by the frost, and many fields will have to be replanted. Some strawberries were frosted, but damage was not widespread. Set is good in

most sections and the berries are sizing well. The first harvest is expected in about two weeks. Asparagus harvest continues, with good quality but light yields in most sections. Green peas are in good condition, and early fields in the Southeast are starting to bloom.

Frosts further damaged fruit in nearly all areas. In the Berks-Lehigh section and the Franklin, Adams, York fruit area apples were hard hit and many growers report that less than a half crop is expected. In some areas air currents and air drainage caused a complete loss. In others, primarily on higher ground, very little damage was incurred. Cherries were damaged again after suffering from severe freezes in early May and in a few localized sections of the southern region the cherry crop is a complete loss. Frosts in the important Erie county grape area injured buds, especially

(Continued on Page 14)

CHECKERBOARD Service bulletin

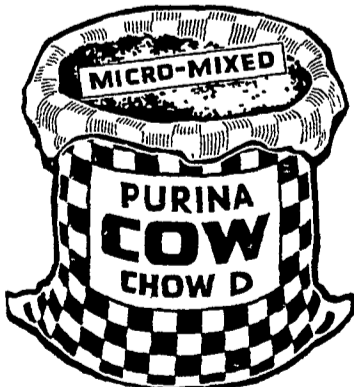


UP TO A TON MORE MILK PER COW ...with Purina Cow Chow D

If you feel that your cows have the bred-in capacity to produce more milk than they're making now... take a tip from leading Eastern dairymen and switch them to Purina Cow Chow D.

This exciting "high efficiency" milking ration brings out the best; often lowers your feed cost per hundred pounds of milk. It works—not only in Purina's big Dairy Research Center, but on farms of every size here in this area.

Feed exactly as you would any other good milking ration—according to production of each individual cow. But it's what happens inside the cow that makes the big difference. Purina Cow Chow D is heavy with energy. It packs a milk-making punch that pays off in milk checks.



S. H. Hiestand & Co.
Salunga

James High
Gordonville

Wenger's Feed Mill, Inc.
Rheems

John B. Kurtz
Cedar Lane

Ira B. Landis
Valley Road, Lancaster

John B. Kurtz
Ephrata

Whiteside & Weicksel
Kirkwood

J. H. Reitz & Son, Inc.
Lititz

John J. Hess, II
Intercourse - New Providence

Warren Sickman
Pequea

John J. Hess
Kinzers - Vintage

Concrete Blocks

Immediate Delivery

New Holland Concrete Products

New Holland, Pa. 354-2114

Get the BIG silo unloader value!

VanDale

Delivers more silage faster!

Patented 8-point suspension keeps unloader level at all times and centered for more efficient operation.

- Double auger system digs the silage faster and more evenly under all conditions whether silage is frozen, wet, or dry.
- Exclusive, adjustable drive hub gives more positive traction, keeps the machine operating evenly, and requires less power.

DELIVERS BETTER SILAGE TOO!

The double augers, operating in conjunction with the patented V-paddle impellers, dig the silage, mixes it thoroughly, and then throws it down the chute. Your cows and cattle get good, palatable silage... not a powdered mash as so often happens with unloaders using blowers.

TWO SIZES:
Standard—for silos 10' to 16'
Heavy Duty—for silos 12' to 30'

CALEB M. WENGER
R. D. 1 QUARRYVILLE, PA.
Drumore Center KI 8-2116

WRITE OR PHONE US FOR COMPLETE INFORMATION AND PRICES.

Bulk Spreading Service

Dealers for —
FERTILIZER and LIMESTONE

SMUCKER BROS.

Bird-in-Hand
Ph. 656-9156

The Most Famous Name In Corn

Pfiester Associated Growers

1007 Nissley Rd.
Lancaster
Phone 898-7121

For Low Cost Weed Control Use LV4 At Corn Planting Time

Weedone LV-4 (Low Volatile Ester)
1 gal. can \$5.25
5 gal. can .. . \$24.50

Weedar 64 (amine)
1 gal. \$3.75
5 gal. \$17.50

Weedone Brush Killer "32"
1 gal. can \$7.25

P. L. ROHRER & BRO., INC.

SMOKETOWN
Ph. Lanc. 397-3539

Exclusive from NEW IDEA

FIRST GROUND-DRIVEN RAKE WITH V-BELT DRIVE!

- * Quiet running
- * Choice of 4 or 5 bar reel
- * Easy-to-change reel speed
- * Only 3 daily lube points
- * Attractive Low Price

Look at **NEW IDEA** before you buy

A. B. C. Groff New Holland	Landis Bros. Lancaster
Wilbur H. Graybill Lititz, R. D. 2	J. Paul Nolt Gap
H. S. Newcomer & Son Mount Joy	A. L. Herr & Bro. Quarryville
Allen H. Matz Denver	Chas. J. McOmsey & Sons Quarry Hill, Pa.
Chet Long	