

**For The Farm Wife**  
(Continued from Page 16)  
olives, and Parmesan cheese, repeating layers three times. Sprinkle top with parsley. Bake in moderate oven (350 degrees) until bubbly, about 20 minutes. 4 to 6 servings.

For a rich homemade pie try this rhubarb pie—

**RHUBARB CHEESE PIE**  
½ cup shortening  
1½ cups sifted flour  
1 teaspoon salt  
2 to 3 tablespoons water  
2 pounds rhubarb

2 tablespoons cornstarch  
½ cup sugar  
4 packages (3 ounces each) cream cheese  
2 eggs  
½ cup sugar  
1 cup dairy sour cream

Sift flour with salt into a bowl. Cut in shortening using a pastry blender or fork, until the mixture is the consistency of corn meal and small peas. Sprinkle cold water, a little at a time, over flour mixture. Toss together lightly with a fork. Place dough on waxed paper. Knead 3 times. Press gently

into a ball. Let stand for 20 minutes. Lightly flour pastry cloth or board and covered rolling pin. Roll dough into circle ¼-inch thick. Fold the dough over rolling pin and lift onto pan. Fit pastry into pan. Do not stretch pastry. Press with fingertips from center out to remove air bubbles. Fold edge of pastry under and make a high fluted edge.

Blend together rhubarb, corn starch, and ½ cup sugar. Pour into unbaked pastry shell. Bake in a hot oven (425 degrees) for 15 minutes. Meanwhile, blend together the cream cheese, eggs, and ½ cup sugar. Remove pie from oven at end of 15 minutes. Reduce oven temperature to moderate (350 degrees). Spoon cream cheese mixture over top of fruit filling. Return pie to oven and continue baking for about 30 minutes. Cool. Spread sour cream over top of pie. Garnish with unblanched sliced almonds. Refrigerate until ready to serve.

NOTE: Two baking temperatures suggested because of the cheese topping.

**RHUBARB PIE**

1 cup sugar  
3 cups diced rhubarb  
½ teaspoon grated orange rind  
3 tablespoons flour  
½ teaspoon salt  
2 tablespoons butter  
Pastry for 2-crust pie (9-inch)

Combine all ingredients, except pastry. Put in unbaked pie crust and cover with top crust. Bake at 450 degrees for

**Farm Women 22 Hold Banquet**

The Mother and Daughter banquet held by the Society of Farm Women 22 Tuesday in the West Willow fire hall attracted a total of 49 persons.

Group singing was led by

10 minutes, then reduce heat to 400 degrees for 25 minutes. NOTE: This pie is good for freezing, unbaked.

Mrs. Hebron Herr, with Mrs. Donald Kepner as accompanist. Mrs. John Shenk sang a solo, also accompanied by Mrs. Kepner.

Prizes for games were presented to Mrs. Norman Hess, Mrs. Henry Hess, Mrs. Marie Steineman, Mrs. Melvin Peter and Mrs. Claude Miller.

Mrs. Ira Rutt, guest speaker, showed pictures of Haiti.

The next meeting will be held Tuesday, June 11, at 1:30 p.m. at the home of Mrs. Harry Shenk, 806 Dorsea Rd.

**BIG SAVINGS!!**  
STANDARD EQUIPMENT'S BIG GOLDEN SPRING DISCOUNT

**STANDARD'S "Easy-All"**



**COMFORT STALLS**

Pay For Themselves First Year Provides Pasture Comfort Comfortable Cows Produce More

**STANDARD'S "Mighty-Move"**



**BARN CLEANER**

Adaptable To Any Barn Free Barn Plans Easier To Install Ball Bearings For Longer Life

See Your Standard Dealer or Write  
**COPE & WEAVER CO.**  
NEW PROVIDENCE  
Ph. ST 6-7351

ALSO VENTILATING SYSTEMS BIRD PROTECTORS FEED COLUMNS WINDOW FEED TROUGH VEGETABLE TABLES

**CUSTOM MADE STEEL GATES ALL WELDED CONSTRUCTION**  
Featuring a safety bolt latch

Why buy a wooden gate when steel is just as cheap.

**Frey Bros.**

Quarryville, R. D. #2  
Phone ST 6-2235

**POTATOES**

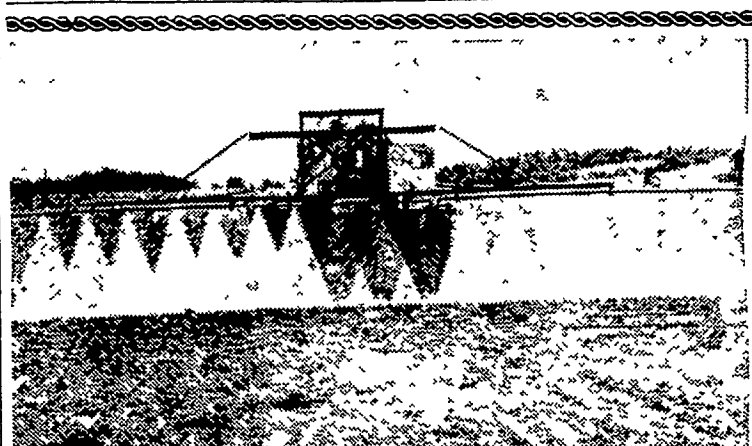
Seed or Eating

**\$3.00 a bag**

5 bags or more \$2.50

**Groff's Hardware**

New Holland



**REVOLUTIONARY NEW FERTILIZING PRACTISE**

**INCREASES YIELDS & PROFITS!**

**REICHARDS HI-AVAILABLE LIQUID FERTILIZER**

Provides these advantages

- WE USE OUR OWN APPLICATION EQUIPMENT — our bulk spreading service assures even, perfect application
- NO SEGREGATION OR SEPARATION — every drop contains all 3 major elements
- CHEMICALLY MIXED — guaranteed to outperform a blended fertilizer
- SAVE UP TO \$6 PER TON — "on-the-field" costs are lower
- PRICES SAME AS DRY FERTILIZERS
- RESULTS AT ONCE — no waiting for moisture for ingredients to become soluble.

The Soil Takes it in Like Rain



Phone or See

**GEHMAN FEED MILL, Inc.**

Denver, Pa. Andrew 7-5585  
Mfd. by Robert A. Reichard, Inc., Allentown, Pa.

Here's the Dual-Purpose **GRAIN-SILAGE Sorghum Variety** that's "Taking the Country by Storm!"



**DEKALB FS-1a**

Large, open, grain-filled heads on sturdy semi-sweet, large-leaved stalks make DeKalb FS-1a an ideal Silage Crop. Known for its high grain yield, palatability of stalks and excellent tonages. Here's a real "crop-maker" for you.

HURRY—  
SUPPLIES ARE LIMITED

**P. L. ROHRER & BRO., INC.** Smoketown Phone Lanc. 397-3539

SAVE FOR FUN . . . JOIN A THRIF T. FULTON

# Vacation Club



AT ANY FRIENDLY

FULTON

National BANK

MEMBER FEDERAL DEPOSIT INSURANCE CORP.

PENN SQUARE  
McGOVERN AVENUE  
EAST PETERSBURG  
MOUNTVILLE • AKRON  
GAP • MANHEIM