



INCHES OF MILK IN THE TANK are measured on a stainless steel stick which stays in the tank. The stick is marked every thirty-second of an inch and the depth of milk can be converted to pounds by use of a chart for every tank. L. F. Photo.

TWICE EACH MONTH the tank driver takes a sediment test from each tank. A quantity of milk is drawn into the tube and forced through a filter disc. The amount of sediment on the disc is checked against a standard chart at the dairy, and the producer gets the report with his check. L. F. Photo.

Milk Truck

(Continued from Page 7) by the time we got back to Lancaster Harnish said there is on churning in the truck, but it does make quite a bit of foam.

Harnish talked to the farmers and took orders for clean-

ing materials and other supplies, if the dairyman was nearby. He says most of the dairymen on his route are very cooperative and try to make his job as easy as possible. Most of them try to keep the driveway open when there is snow, and the machinery out

of the way in the summer home place during high school time. But once in a while in while his father worked away. hay season, he says, he finds a hay wagon parked in the drive.

As we drove, I learned that Harnish graduated from the vocational agriculture course at Lampeter-Strasburg High School in 1956. He had been doing the farming on the small

After graduation, he said, he realized he could not operate a successful dairy on such limited acreage, and a real estate developer wanted the land for a housing project.

Harnish took a short course in Bulk Milk Hauling at the Pennsylvania State University and began driving the tank truck for Queen Dairy in 1957. He is still at the job. He likes it, and, while it is not farming, he gets a great deal of satisfaction from his work. This is agriculture too, I thought.

Chicago, Saturday
(Continued from Page 2)

Slaughter steers: on the close, high Choice and Prime 1150-1375 lbs. 22.50-23.50; including around 10 loads Prime 1200-1375 lbs. at 23.50 and few loads Prime 1275-1375 lbs. 22.75-23.00. On Monday, 8 loads Prime 1200-1325 lbs. 24.00 and one load Prime 1200 lbs. 24.25. Choice 1200-1375 lbs. 21.00-22.50, early in week, comparable weight and Grade 22.00-23.00. Late, Choice 1350-1475 lbs. 20.50-21.00. Bulk Good 900-1200 lbs. 20.75-21.50. Mixed Good and Choice mostly 950-1250 lbs. 21.50-22.25. Standard and low Good 1850-2050.

Slaughter Heifers: Load high Choice and Prime 950 lbs. 23.50 Bulk Choice 850-1100 lbs. 22.25-23.25, closing 22.25-22.75 with two loads High Choice and some Prime 1066 lbs. at 23.00. Good 2050-22.00. Mixed Good and Choice 21.75-22.25.

Cows: Utility and Commercial closed at 16.00-17.50. Canner and Cutter 14.00-16.25.

Bulls: Utility and Commercial closed at 19.00-21.00.

Feeders: Couple loads Choice 950-980 lb. steers 22.85-23.50.

Pennsylvania State University and began driving the tank truck for Queen Dairy in 1957.

He is still at the job. He likes it, and, while it is not farming, he gets a great deal of satisfaction from his work.

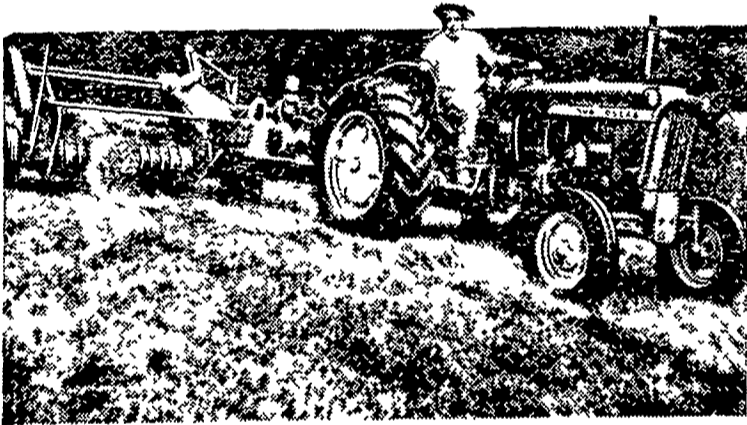
This is agriculture too, I thought.

Great on hills
and on the level!



The Compact

JOHN DEERE 1010 ROW-CROP UTILITY



Most-usable 35 h.p. on the market! This "1010" Compact is designed and powered to handle easily any job you ask it to do. Work it on slopes with the security only a low-profile 4-wheel tractor can give. Work it inside and around buildings; it turns short, maneuvers with ease. Cultivate advanced crops with ample clearance. Hustle 2- or 3-bottom plows; drawn, 3-point, mounted, or 540-1000 rpm PTO tools. Throttle down, shift up on light loads; get Variable-Horsepower economy (up to 35 h.p., gas or Diesel). We'll demonstrate. Ask about our convenient and confidential Credit Plan. Perfect Power to match your farm requirement, the compact series of 1010 tractors. Row Crop - Row Crop Utility - Row Crop Utility Special.

**REPUBLICANS
BEWARE!**

There will be two Democrats listed for Superior Court Judges on your Republican Primary ballot next Tuesday.

BE SURE to vote for the two Republican sitting judges who have served us well for the past 10 years

VOTE FOR

**Judge Harold L. Judge J. Colvin
&
ERVIN WRIGHT**

(#2 and #4 on your ballot)

Lancaster County Republican Committee

Richard A. Snyder, Chairman
Harry F. Gring, Treasurer

**LICK
MASTITIS!**

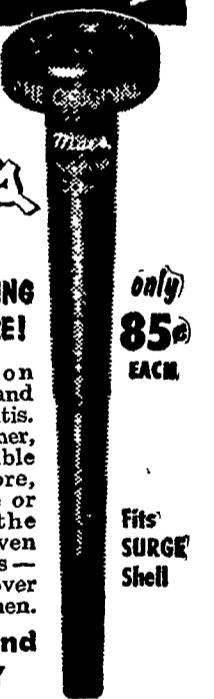
Switch TODAY To



WORLD'S LARGEST-SELLING NARROW BORE!

This inflation helps prevent and clear up Mastitis. Also milks cleaner, faster. Available in Narrow-Bore, Medium-Bore or Large! Use the Original, Proven Best—Maes—preferred by over 50,000 dairymen.

STOCKED and SOLD BY



only 85¢ EACH

Fits SURGE Shell

Wolgemuth Bros. Inc.

Florin, Pa.

Landis Bros. Inc.

Lancaster 393-3906

A. B. C. Groff

New Holland 354-8001



Alan Beyer

Christiana LY 3-5687

M. S. Yearsley & Sons

West Chester 696-2990

Wenger Implement Co.

Buck BU 4-4467

Sholtzberger's

Elm 665-2141

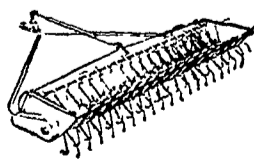
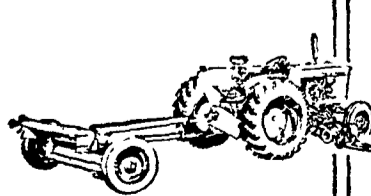
Edwards & Cox

Oxford 932-2929

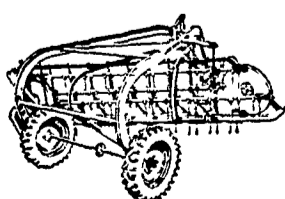
H. S. Newcomer & Son

Mt. Joy 653-3361

2 Hay Conditioners and 6 Mowers

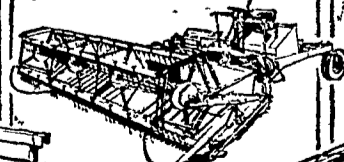
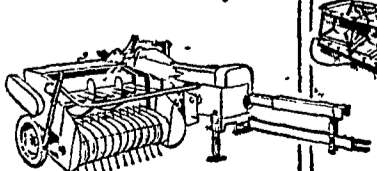


Swath Fluffer



5 Rakes

4 Balers and Bale Ejector



Windrower

3 Elevators and Bale Conveyor



CHOOSE FROM THE LONG GREEN LINE OF CUSTOMERIZED JOHN DEERE HAY EQUIPMENT