

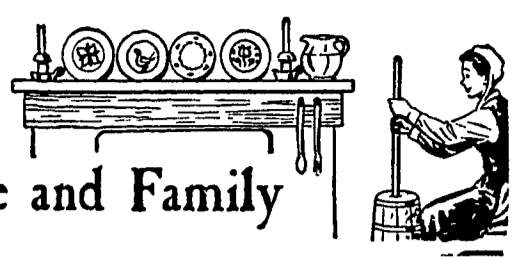
For The Farm Wife or cream cheese only until combined. Sprinkle loaf pan. Bake in moderate oven (350 degrees) about 55 minutes. Cut into squares and serve warm.

APRICOT DATE BREAD
 1 egg, slightly beaten
 3/4 cup sugar
 3/4 cup milk
 1/2 cup tomato catsup
 3 cups packaged biscuit mix
 1 1/2 cups finely cut dried apricots
 1 cup finely cut dates
 Heat oven to 350 degrees. Combine first 4 ingredients. Stir in biscuit mix and fruits. Beat vigorously 30 seconds. Turn into well greased loaf pan (9 1/2 x 5 1/4 x 2 1/4 inches). Bake 1 hour 5 minutes or until toothpick inserted in center comes out clean. Flavor improves with overnight storage. Serve thinly sliced with butter.

BRAN DATE BREAD
 1 1/2 cups boiling water
 1 1/2 cups cut, pitted dates
 2 tablespoons shortening
 1 1/2 cups whole bran cereal
 1 egg, slightly beaten
 1 teaspoon vanilla flavoring
 1 1/2 cups sifted flour
 1 teaspoon baking powder
 1 teaspoon baking soda
 1 teaspoon salt
 1/4 cup sugar
 1/4 cup chopped nutmeats
 Pour boiling water over dates, shortening and whole bran cereal. Stir in egg and vanilla; let stand until most of moisture is taken up. Sift together flour, baking powder, soda, salt and sugar. Add to first mixture together with nutmeats, stir-

COFFEE CAKE SWIRL
 2 cups packaged biscuit mix
 1/2 cup sugar
 3/4 cup milk
 1 egg
 2 tablespoons melted shortening
 1/3 cup light brown sugar, firmly packed
 3/4 teaspoon ground cinnamon
 1/4 cup tomato catsup
 1 tablespoon melted butter or margarine
 1/2 cup chopped nuts
 Heat oven to 400 degrees. Mix first 5 ingredients just until thoroughly blended; spread evenly on bottom of greased square cake pan (8 x 8 x 2 inches). Combine brown sugar with remaining ingredients; spread evenly over top of batter. With a knife cut down and

For the Farm Wife and Family



Ladies, Have You Heard? . . .

By: Jane Thurston, Extension Home Economist
Remove Stubborn Chocolate Stains
 Chocolate stains are easy to remove if you take prompt action and use the right method. For a washable fabric, sponge the stain with cold water or soak in cold, clear water 30 minutes or longer. If stain remains after sponging or soaking, work a synthetic detergent into the stain, then rinse thoroughly and allow the article to dry. If a greasy stain remains, remove it with a grease solvent, such as carbon tetrachloride. If a brown stain remains after the detergent treatment, use a chlorine or sodium perborate bleach or hydrogen peroxide. Follow instructions on the container for using the bleach. To be sure bleach is safe to use, test it first on a seam allowance, hem, inside of

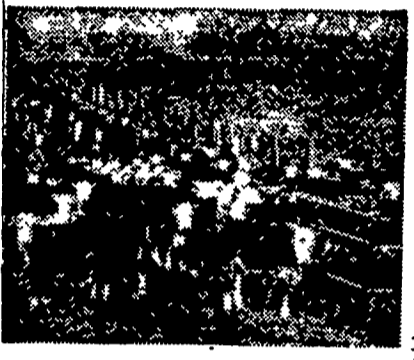


THURSTON

a pocket, or tail of a blouse or shirt. If the fabric isn't washable, sponge the stained area with lukewarm water. Place a sponge under the stain to absorb excess water. If the stain persists rub synthetic detergent on it and work into the fabric, then rinse. Use the same procedure for removing greasy stains that you use on washable fabrics.

Food Labels Are Reliable Guide
 Quality, amount, brand name, ingredients, and similar information on food labels help (Continued on Page 10)

No Other Protein Need When You Feed



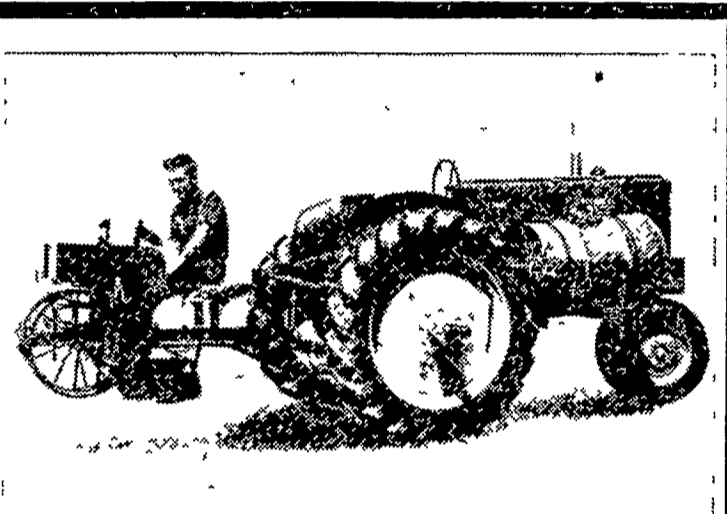
SPECIAL TANVILAC

Feeders Say . . .
 "The Most Economical Feeding Plan of All"

USE ONLY 1/2 LB. SPECIAL TANVILAC PER HEAD PER DAY WITH GRAIN AND ROUGHAGE — GET BIGGER PROFITS

No trouble with scours or cattle going off feed. You'll be more than satisfied with our feeding program for you'll get healthy stock, quick gains at low cost. Remember, there's a FEED LOT PROVEN TANVILAC CULTURE PRODUCT FOR EVERY FARM-FEEDING PURPOSE.

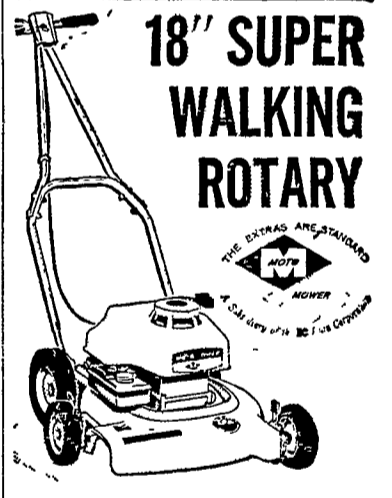
FOR MORE PROFITS—MAIL COUPON
 THE TANVILAC COMPANY, INC.
 6th & Corning Aves., Box 96, Highland Park Station, Des Moines 13, Iowa
 Please Send Me Additional Information about Special Tanvilac.
 I have _____ Cattle _____
 NAME _____
 ADDRESS _____



SEE THE GENUINE
MECHANICAL TRANSPLANTER
 HORSE DRAWN OR TRACTOR MODELS
 With All The Features The Farmer Wants and Buys
 SOLD AND SERVICED BY
LESTER A. SINGER
 RONKS, PA. Phone Strasburg 687-6712

COMPARE AND YOU'LL SAY make mine

MOTO-MOWER



A truly precision mower with outstanding features.

- Convenient on handle controls.
- Magic touch height control.
- New SAF-T-TEMP blade guarantees against crankshaft damage.
- Meets A.S.A. safety standards. Look for this seal before you buy.

See or call us for used mowers, tillers and garden tractors.

L. H. Brubaker
 350 Strasburg Pike, Lanc. Lititz, R. D. 3
 Ph. Lanc. 397-5179
 Strasburg 687-6002
 Lititz 626-7766

C. O. NOLT
 LOCAL DISTRIBUTOR
 BIRD-IN-HAND Phone Lanc. 397-0751

3 WAYS TO SAVE ON SILAGE with SWEET BULK 'N FLAKES

- PRESERVE YOUR SILAGE**
 Sweet Bulk 'N Flakes has extremely high water absorption . . . saves nearly all green forage weight from run-off . . . prevents silage value from seeping away.
- INCREASE ITS FEED VALUE**
 Sweet Bulk 'N Flakes accelerates the formation of acids which enhance the feed value of your silage . . . increase the production of meat and milk.
- ORDER EARLY!**
 Take advantage of your Master Mix Dealer's special offer for "early birds" . . . Stop in and see him about it today!

- L. J. DENLINGER CO. Paradise, Pa.
- ROSS H. ROHRER & SONS Quarryville, Pa.
- LEROY M. SENSENIG Hinkletown, Pa.
- BLEND & MCGINNIS Atglen, Pa.
- EBY'S MILL Lititz, Pa.
- HEMPFIELD MILLS East Petersburg, Pa.

DeKalb 640 Can Take It When The GOING Is ROUGH

DeKalb 640 in dry 1962 won 8 of the top 12 places in the Lancaster County Pennsylvania Corn Club.
 640 is tops for Lancaster County — It yields, it stands, it takes thick planting.

"DEKALB" is a Brand Name. The Number is a Variety Designation.

Next Time PLANT ALL DEKALB
P. L. ROHRER & BRO., INC.
 Smoketown Phone Lanc. 397-8589