



WHEN THE COW EATS, the chain turns on her neck allowing her freedom of movement, but keeping her from stealing feed from a neighbor. John Kreider, Willow Road, says many farmers believe the cow will get down on her knees to eat in the new stall, but he has found that this is not the case. L. F. Photo.

The first open beaver trapping season in Pennsylvania during this century was March 1 — April 10, 1934. Trappers took 6,455 beavers in 50 of the state's 67 counties.

Sweet Potatoes Top Value
One bit of good news in this winter of lean vegetables is that it's a great year for sweet potatoes. The past season's crop came to almost 2 billion pounds, says Harold Neigh, Penn State extension specialist in consumer economics. Sweet potatoes are a top value at markets and a real economy buy.

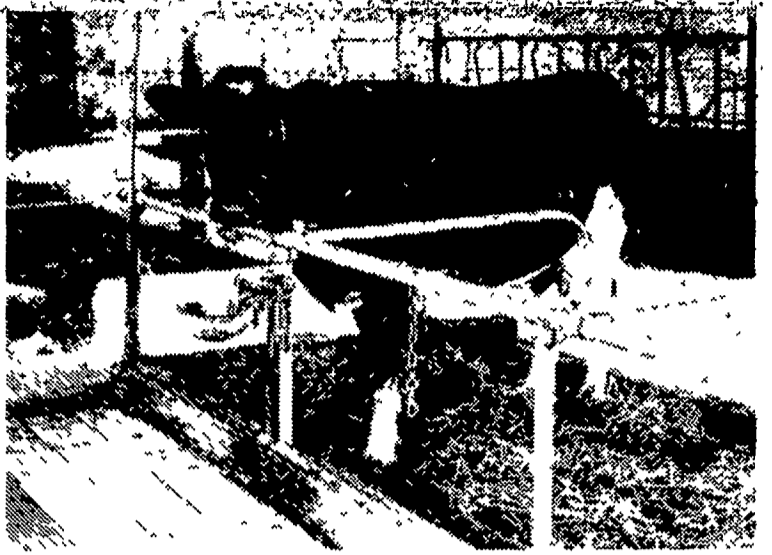
4-H Trained
Since the national 4-H Club movement began a half century ago, nearly 23 million American youths have taken part in the "learn by doing" programs.

County Dairyman

(Continued from Page 8)
Another innovation in the barn is the feed trough which is level with the floor. There is no problem with cleaning out excess feed and the cows make no more mess than they did with the deep troughs, Kreider says.

He is replacing one row of 11 stanchions in the old part of the barn with the new stalls and is selling the old stanchions for enough to pay for the new stalls.

The stall is extremely simple, but it appears to have all the advantages and very few of the disadvantages of more complicated set ups. Kreider is so well pleased with them that he is thinking of manufacturing them on a full scale basis.



EASE OF FEEDING AND CLEANING TROUGHES can be seen in this shot of the John Kreider barn. The trough is level with the floor and is lined with tile. Cow stands at ease with neck over the rail at the front of the stall which doubles as the milker vacuum line. Chain and snap can be hooked to the cow's neck chain at any place, eliminating the need to search for a ring. Freedom of movement makes for more contented and healthy cows. L. F. Photo.

Farm Calendar

(Continued from Page 1)

Everett Kreider near the Buck.

May 8 — 7:30 p.m. — County 4-H Guernsey club meets at the Solanco High School, Quarryville. Parents are invited.

May 10 — 12 noon — Elizabethtown Rotary to entertain 4-H members at the Kannywood Hotel Elizabethtown.

7:30 p.m. — Boots and Saddles 4-H light horse and pony club to hold reorganization meeting at Rothsville fire hall.

7:30 p.m. — Wheat referendum meeting sponsored by the county office of the Agricultural Stabilization and Conservation Service in the Quarryville fire hall.

May 11 — Deadline for nominations for 4-H Club Congress.

FOR BIG CORN YIELDS

POUR FUNK'S-G IN YOUR PLANTER!

for the best in seed and friendly service
SEE

ELMER BRILL
Elizabethtown 367-5441

FRANK H. BUCHER
Lititz 626-6504

JONATHAN S. SHIRK
Leola 656-9302

LESTER ERB
Elizabethtown 367-7112

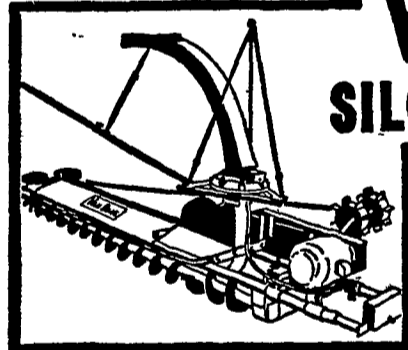
EDGAR C. UMBLE
Gap HI 2-4525

JASON M. MELLINGER
Strasburg 687-6546

A. H. Hoffman Seeds, Inc.

Landisville Ph: 898-5421

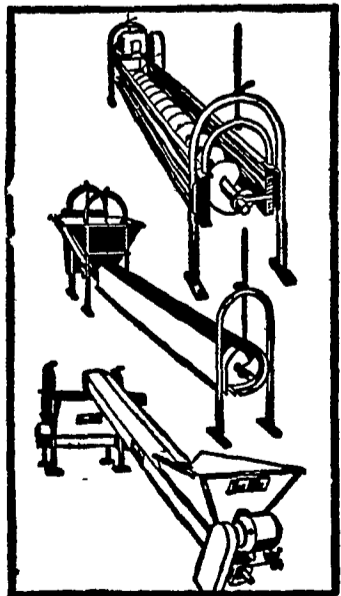
Complete automatic feeding for DAIRY COWS and CATTLE!
VanDale SILO UNLOADERS



Double augers deliver more silage per minute even when silage is deeply frozen . . . and at a lower operating cost. Patented V-paddle impellers throw . . . not blow . . . silage down chute. Adjustable drive hubs give positive traction in all types of silage.

Three-point suspension keeps unloader level at all times.

Plus a complete line of bunk feeders to meet your exact needs



Straight-out Auger Feeder

With VanDale units you can custom build the bunk feeding set-up to fit your needs. Drive section includes hopper, drive assembly and 10', high capacity 8" auger. Additional auger sections are in 10' units and are easily coupled.

Feed-R-Flo Bunk Feeder

The new, all-metal complete feeder. High capacity 8" auger rotates within tube. Gives all-weather protection, even feed distribution, and lower operating cost.

Conveyor Trough

An important link in automatic feeding. Positioned below silo chute, the VanDale conveyor trough carries the silage to the bunk feeder. Primary section includes hopper, drive assembly, and 10', 8" auger. Additional 10' auger sections may be added.

See us for modern automatic feeding equipment

CALEB M. WENGER

R. D. 1 Drumore Center KI 8-2116 Quarryville, Pa.

CHECKERBOARD
service bulletin



Next winter's egg profits... depend on what you do this spring!

What determines laying house profits? Price of eggs? Disease? Cost of feed? Rate of lay? Yes . . . all these are important, but record-keeping Eastern poultrymen will tell you the biggest factor of all is the kind of a pullet you start with!

They're not talking about the different strains, necessarily. They're merely saying that pullets started and raised right—with the best of breeding, feeding, sanitation, and management—invariably make more eggs and more money than those raised any other way. In fact, poorly-raised pullets sometime fail to make a return over feed cost!

So raise them on the Purina Program. We'll help you all we can with advice on debeaking, housing, feeding. We have Purina disease treatments and wormers with Research-approved directions on how to use them. We'll help you wind up next fall with a bunch of big, sturdy, Purina-fed pullets developed to return good money for you in the laying house.

- | | |
|--|---|
| S. H. Hiestand & Co.
Salunga | John B. Kurtz
Ephrata |
| James High
Gordonville | Whiteside & Weicksel
Kirkwood |
| Wenger's Feed Mill, Inc.
Rheems | J. H. Reitz & Son, Inc.
Lititz |
| John B. Kurtz
Cedar Lane | John J. Hess, II
Intercourse - New Providence |
| Ira B. Landis
Valley Road, Lancaster | Warren Sickman
Pequea |

John J. Hess

Kirkers - Vintage