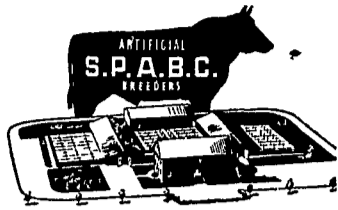


## More Milk Means More Income With An Added Profit For You

Get both with the



Breeding Program

### SOUTHEASTERN PENNA. ARTIFICIAL BREEDING COOPERATIVE

P. O. Box 254, LANCASTER, Pa. Ph. 569-0411

There's a calling station near you . . .

Akron 859-2552 Mounty Joy 653-2411  
Christiana LY 3-5187 Quarryville ST 6-7381  
Manheim 665-2467 Strasburg 687-6292



THE BACKSTOP ON THE girls' softball field needed some repair. Kenneth Koser, left, son of Mr. and Mrs. Melvin Koser, Narvon R2, had no shop work of his own on this particular day. He is being instructed in handling the arc welder by his teacher of vocational agriculture, Henry E. Givler. L. F. Photo.

### ● Ag. Teacher

(Continued from Page 8) has never had an American Farmer, but in the 11 years Givler has been at the school, six boys have won the Keystone degree — the highest degree given by the state FFA.

Of the six graduates to be so honored, Givler said, four are farming and two are continuing education in agriculture at the Pennsylvania State University.

Our next stop was at the farm of Marvin Hershey, Gortland R2. (Continued on Page 12)

## Future Farmers Speech Contest Is Next Week

The annual York-Lancaster area Future Farmers of America public speaking and parliamentary procedure contest will be held Monday night in the Dover High School in York County.

Teams and individuals from departments of high school vocational agriculture in both counties will compete for the opportunity to move into the regional contest scheduled to be held April 25 on the campus of Millersville State College.

Judges from Lancaster Co. will include Russell Drumm, Denver R2, Stanley Musselman, Quarryville, and Jack Owen, Willow Street R1, all former teachers of vocational agriculture in the county.

The contest was arranged and will be supervised by Thomas Malin, area advisor of vocational agriculture and FFA.

## Committee Plans 1964 Farm Show

HARRISBURG — Preparations for the 48th Pennsylvania State Farm Show, Jan. 13-17, 1964, were under way today following a meeting of the Farm Show Committee at which State Secretary of Agriculture Leland H. Bull was elected chairman.

The committee functions in an advisory capacity to the Pennsylvania Farm Show Commission, an agency of the State Department of Agriculture.

A new office of vice chairman was authorized, and to this position the committee named Jack R. Grey, deputy State Secretary of Agriculture.

Harold R. McCulloch, University Park, secretary since 1946 of both the committee and the Farm Show Commission, was renamed to his committee post. McCulloch is assistant director of the Cooperative Extension Service at the Pennsylvania State University.

Secretary Bull, chairman of the Farm Show Commission, and authorized by law to designate a member of that body, announced selection of his deputy, Mr. Grey, for that post.

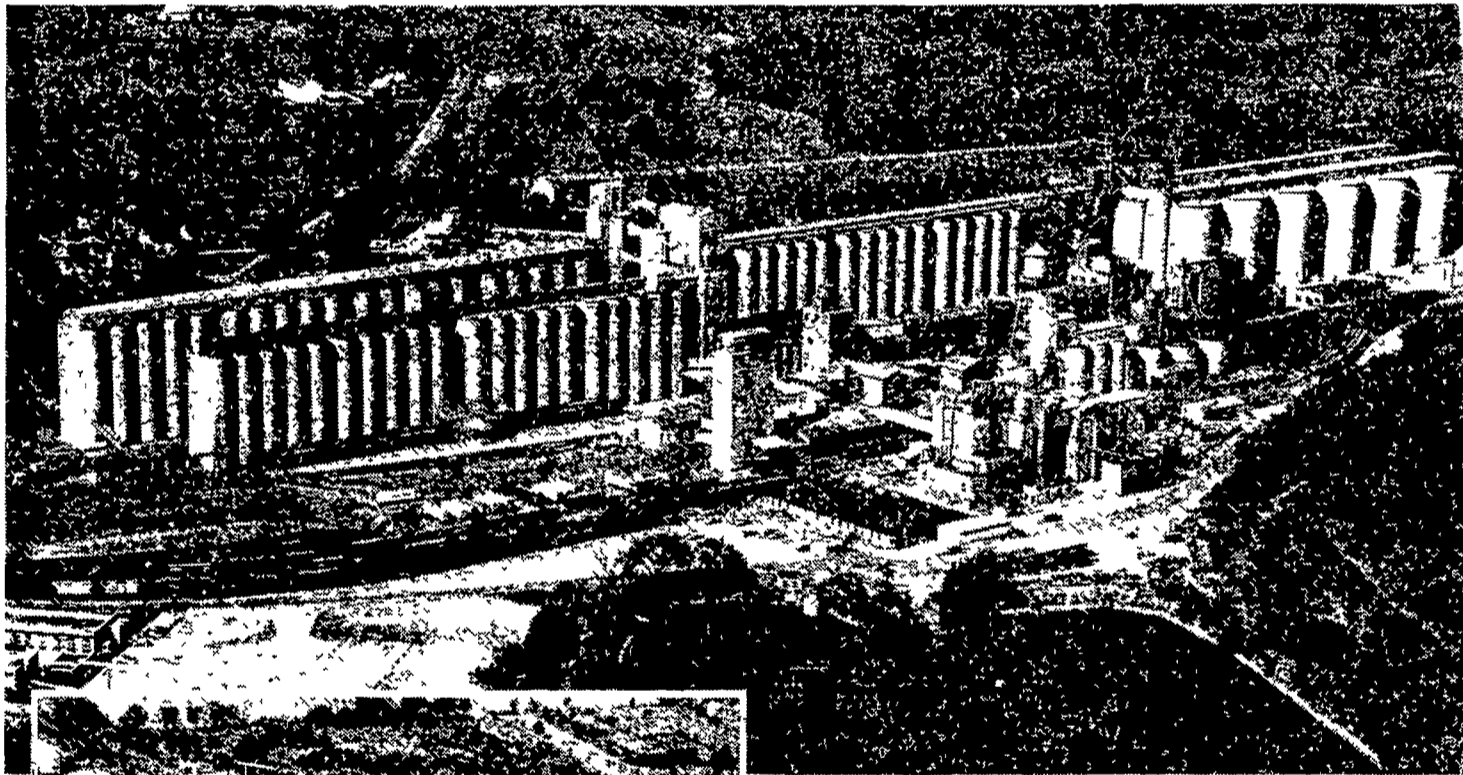
The Pennsylvania Foundation Seed Cooperative applied for membership on the committee. To review its application, Secretary Bull named a committee of Charles E. Cowan, Lancaster; Donald E. Lanus, York, RD 3, and O. W. Rittenhouse, Harrisburg.

If its application is approved, the seed group will become the 56th farm organization to hold membership on the Farm Show Committee.

Seventy men and women, delegates from 39 of the 55 member organizations on the committee, attended its spring meeting that was held Wednesday night (Mar. 27) in the Farm Show Building. It will meet again in early fall to present recommendations for the next Farm Show.

# MASTER MIX MODERN PRODUCTION FACILITIES

*serve farmers in  
Lancaster and surrounding Counties*

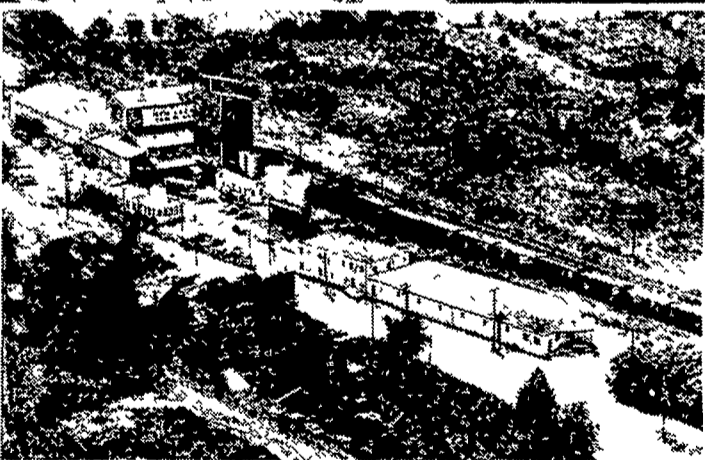


MAIN MASTER MIX PLANT, DECATUR, INDIANA

Other MASTER MIX plants serving the top poultry and livestock farmers in the United States are located at:

Marion, Ohio	Gibson City, Illinois
Memphis, Tennessee	Indianapolis, Indiana
Des Moines, Iowa	Chattanooga, Tennessee
Chicago, Illinois	Monroe, North Carolina
Mendenhall, Mississippi	Jacksonville, Florida

Lockhart, Texas



MASTER MIX PLANT, CAMP HILL, PA.

### MASTER MIX DEALERS SERVING LANCASTER CO.

EBY'S MILL  
Lititz, Pa.

LEROY SENSENIG  
Hinkletown

HEMPFIELD MILLS  
East Petersburg, Pa.

ROSS H. ROHRER & SONS  
Quarryville, Pa.

HESTAND, INC.  
Marietta, Pa.

L. J. DENLINGER CO.  
Paradise, Pa.

BLEND & MCGINNIS  
Atglen, Pa.

