

Hunting License

(Continued from Page 1)

Browse cutting is done free by farmers and lumbermen in Pennsylvania in cutting paperwood, Firewood and timber. Game Commission claims financial handicap due to working on a 1949 income and indicates funds will be below operational levels in 1964.

ARGUMENT: Operational levels should be practical levels based on income available, NOT ON UNLIMITED DEMAND to provide substance for ambition.

Game Commission bases needed extra funds on land acquisition program.

ARGUMENT: The Game Commission is an administrative commission, not land acquiring body. (See Duties of Game Commission Penna. Manual 1959-60, Page 330).

In an ambitious land acquiring program the state becomes competitive with private enterprise in this manner. In many sections of the state farmers to

supplement their income in winter-cut, paper wood, posts, firewood and timber. If they do not own woodland they acquire it by purchase from a nearby source. The Game Commission offers up to \$100.00 per acre, which cannot be afforded by these people. Therefore, they can be priced out, actually deprived of their income. NOTE: The work done by these farmers in this manner is providing browse which the Commission is and has been paying to cut. They are actually browse cutting-free.

In acquiring land from private owners an income problem arises as the land is no longer subject to taxes. The long range undesirable view is a "state owned state". Our entire economic structure is based on private ownership. Based on license sales of approximately 1,000,000 in 1962 the Commission anticipates \$1,500,000 additional revenue in 1963 by increased license fees. This automatically admits

an anticipated drop in hunting licenses issued of approximately 250,000.

ARGUMENT: Since each hunter spends a minimum of \$50.00 for license, gasoline, hunting equipment, tolls, meals, refreshments and taxes this would amount to a \$12,500,000 loss to our state economy. Is it economically wise to gain \$1,500,000 and lose \$12,500,000 by fewer hunters in the field?

Game Commission anticipates 250,000 drop in license sales. This would, in most cases, be a drop out of those in the low income brackets.

ARGUMENT: Hunting is and has been the working man's sport. It is the common bonding sport of most poor families. Hunting, not golf, is the poor man's sport. Is it desirable to eliminate these 250,000?

Possible losses to hunters and sportsmen if license fee increase is granted and enacted:

1. Possible \$11,000,000 loss to State economy.

2. Many farmers feeling the additional license fee revenue would work against them by state competition for lands, loss of tax money in their area, etc will close their lands to public hunting thereby dampening interest in hunting and bringing about a greater loss in state revenue and consequently eliminating this competition.

NET RESULT: Poorer and less hunting, costing more.

3. Increase in indirect tax. Businesses are failing. Some are just quitting primarily due to excessive taxation. Are we going to hold the tax line or are we going to promote business failures and unemployment. Unemployment to most would mean no hunting.

4. **EMPLOYMENT:** Distressed areas especially need stimulation, not stagnation. Don't jeopardize revenue sources — this makes unemployment.

If people are interested pro or con in license increase, I urge the sending of four cent cards to their county representatives and senators, stating their wishes.

Governor Sets Soil Stewardship Week Dates

HARRISBURG — Governor William W. Scranton on Thursday designated May 19 to 26 as Soil Stewardship Week, and called upon the public to join in and support all soil conservation efforts.

To mark the traditional religious tie with soil stewardship, the Governor's designation also named the opening day of the observance, May 19, as Rogation Sunday. This was in keeping with a ceremony dating back to the fifth century A.D.

A statement signed by the Governor said "Pennsylvania's 11,862,000 acres of farmland that supply life-sustaining food and feed are one of the State's most important resources

"The preservation of the land, or soil, through appropriate conservation practices is one of the urgent challenges confronting the Commonwealth and its people"

"Land ownership or use implies a moral responsibility of stewardship in order that this basic resource can benefit future generations"

"I am pleased to designate May 19 to 26, 1963, as 'Soil Stewardship Week' in Pennsylvania, and urge pastors of city and rural churches of all faiths to observe Rogation Day, the fifth Sunday after Easter, in regular worship services as Soil Stewardship Sunday, and call upon farm people and the public generally to join in and support all soil conservation efforts.

Providence 4-H Holds Election

By Joan Shaub, Reporter

The Providence 4-H Club met Thursday, March 25 at 7:30 p.m. at the Providence Elementary School

Don Trimble gave a talk on the parliamentary procedure of electing officers and also presided over the election

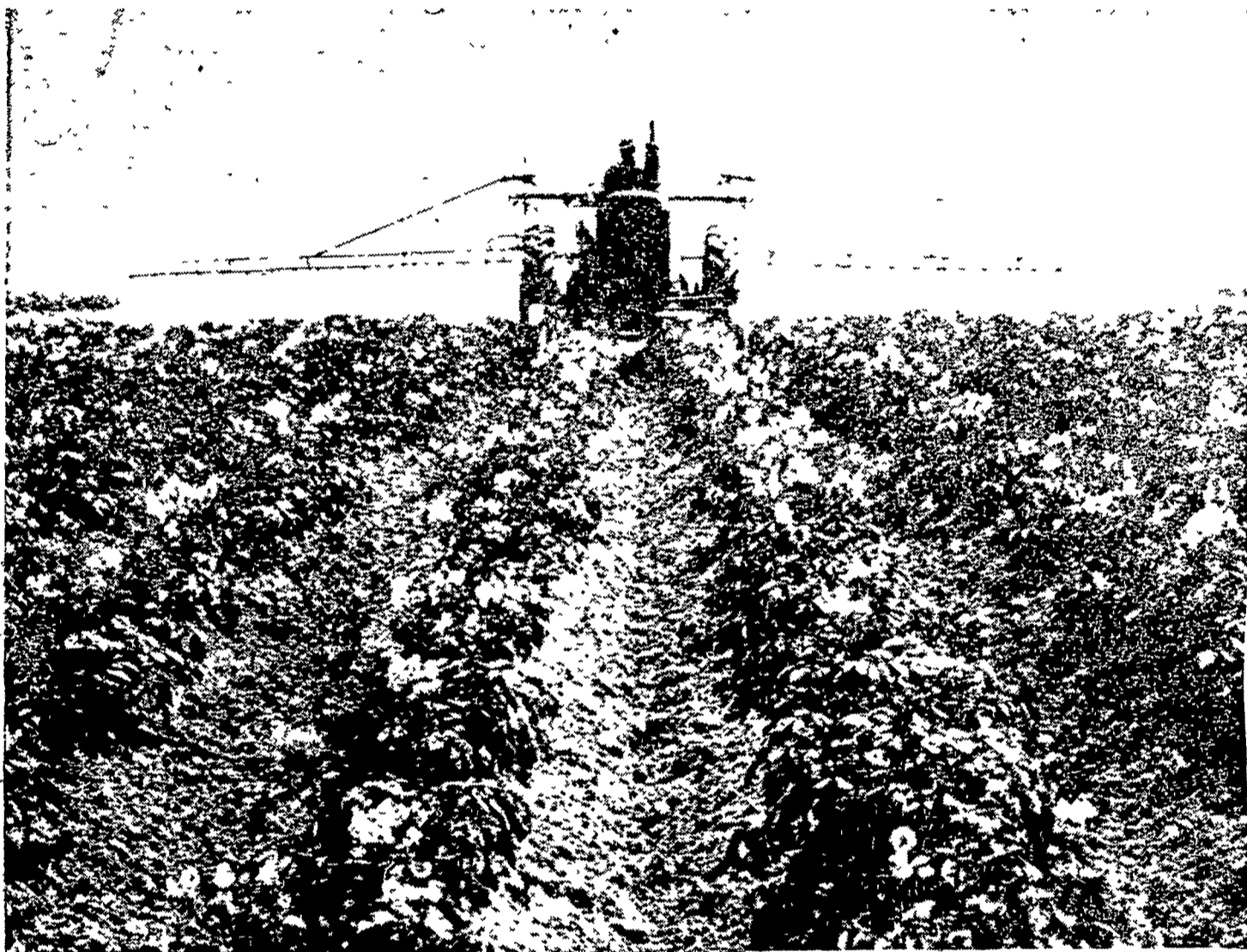
Officers elected were as follows: President, Robert Henry; Vice President, Albert Henry; Secretary, Rebecca Atkins; Treasurer, Larry Landis; News Reporter, Joan Shaub; Song Leaders, Jodie Atkins, Patty Rineer, Game Leaders, Parke Sollenberger, Susie Atkins, County Council Representative, Susie Atkins.

A business meeting was held after the election and the minutes were read by Rebecca Atkins. Patty Rineer gave a report from the County Council meeting.

Joan Shaub then gave a demonstration on "The Equipment Needed in Collecting and Mounting of Insects".

Rev. Dickson of the Clearfield Methodist Church spoke on "Suffering". Afterward a refreshment period was held and the meeting adjourned to meet April 25, at the Providence Elementary School at 7:30 p.m.

Sharp rises in temperature followed by equally drastic drops are a major factor in higher transit cripple and death losses in hogs, according to Livestock Conservation, Inc. This is particularly true during the spring months.



Tough on disease but mild on plants, "Manzate" gives your potatoes sure protection against early blight and late blight.

Powerful disease protection begins with Du Pont MANZATE®...ends with more #1 potatoes. Whenever you use Du Pont "Manzate" maneb fungicide, you get powerful disease protection. Years of field applications—in every important potato area—prove "Manzate" is tops for disease control. This year, for healthier, heavier harvests—and extra profits, too—spray your potatoes with "Manzate". You'll see why it's still the first—and the last—word in fungicides.



On all chemicals follow labeling instructions and warnings carefully.

Better Things for Better Living...through Chemistry

MANZATE AND OTHER DUPONT PRODUCTS

distributed by

J. C. EHRLICH CHEMICAL CO., INC.

736 East Chestnut Street

Lancaster, Penna.

Phone 397-3721