

● **For The Farm Wife**

(Continued from Page 8)

- ¼ teaspoon pepper
- 2 eggs, slightly beaten
- 1½ teaspoons Worcestershire sauce
- 2 teaspoons mayonnaise
- ¼ cup butter, melted
- 1½ teaspoons snipped parsley
- 1 cup dry bread crumbs
- 1 egg, slightly beaten
- 2 tablespoons water
- ½ cup dry bread crumbs
- 4-6 tablespoons butter

Mix crabmeat, salt, mustard, pepper, the 2 eggs, Worcestershire sauce, mayonnaise, the ¼ cup melted butter, parsley, bread crumbs; toss together lightly; chill 1 hour. Shape into 6 medium sized flat patties. Dip patties into egg and water which have been mixed to-

gether, then into remaining ¼ cup bread crumbs. Preheat fry pan to 325 degrees. Melt the remaining butter in fry pan; add cakes; fry until golden brown on both sides — about 15 minutes — adding more butter if necessary.

**SEAFOOD PIE**

- 2 tablespoons butter or margarine, melted
- 1 cup chopped celery
- Dash of thyme
- 1½ cups condensed cream of celery soup (10½ ounce can)
- ¼ cup water
- 1 6-ounce can crabmeat flaked
- 1 7-ounce can tuna, flaked
- 2 cups sifted enriched flour
- 2 teaspoons baking powder

- 1, 1, 1, 1, 2, ¼
- teaspoon salt
- teaspoon dry mustard
- egg, beaten
- cup milk
- tablespoons melted shortening or oil
- cup chopped pimento-stuffed green olives

Cook celery in butter or margarine until tender. Add thyme, soup, and water; stir until smooth. Heat to boiling, add crabmeat and tuna and simmer 5 minutes. Pour into lightly-greased 2-quart casserole. Meanwhile, sift together flour, baking powder, salt and mustard. Combine egg, milk and shortening or oil. Add liquid ingredients and olives to flour mixture, stirring only until flour is moistened. Drop by tablespoons onto filling. Bake in hot oven (425 degrees) 25 to 30 minutes, or until lightly browned. Makes 4 to 6 servings.

**Ladies, Have You Heard? . . .**

By: **Jane Thurston, Extension Home Economist**

**Some Advantages Of Annual Flowers**

Annual flowers are inexpensive . . . that's one reason for their popularity. Also annuals are quick growing and make a fast return on your investment. They have a long blooming period, many of them blooming until frost. You can have a wide range of colors and each plant can produce many flowers.

You can find annuals for almost any purpose. You can use them to add color to a spring-flowering rock garden. Annuals cover up dying foliage of bulbs, and you can use annuals in large beds, for edging, and for window and porch boxes. Also annuals lend themselves to a quick change in an overall color scheme.

**This 'an That**  
The word "butcher" was used for "vendor" . . . such as "Candy Butcher" on trains. Another word seldom used in its former meaning is "wheel" for "bike." A child today doesn't know what you mean when



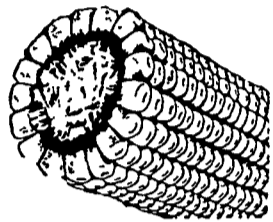
**THURSTON**

you call his bike a wheel. Breakfast cereals are as American as baseball. The processing of breakfast cereals is a big enterprise in the United States, said to be bigger than in any other country. Cereals are manufactured and exported throughout the world.

Buying "on time" demands (Continued on Page 14)

More farmers each month prefer to buy their

- HAY ● STRAW
- EAR CORN

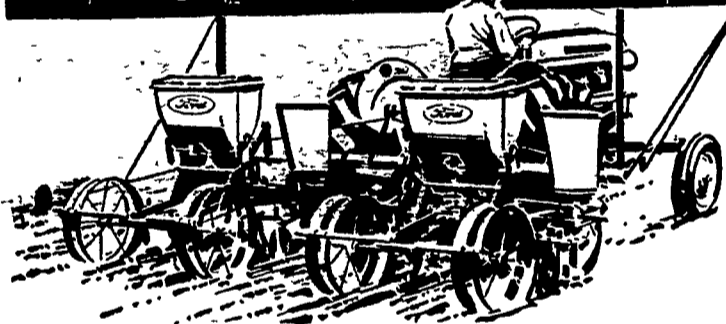


from us for better value and all around satisfaction. At farm or delivered, any quantity as your requirements may be.

PHONE STRASBURG 687-3211

**Esbenshade Turkey Farm**  
PARADISE, PA.

**HIGH-SPEED WAY TO FULL, UNIFORM STANDS**



**FORD REAR-MOUNTED PLANTERS**

2-ROW-4-ROW-6-ROW

Drill or Hill Drop-and-Drill Units  
Corn or Corn-and Cotton Hoppers

- ★ **Fast, Accurate Planting**—Large diameter seed plates—uniform drilling, gentle seed handling at speeds up to 7 MPH.
- ★ **Fully Mounted, Close-Coupled**—Attach in a minute or less to 3-point hitch. Mounting is flexible for uniform planting depth.
- ★ **Adapts to Your Needs**—Bushel or half-bushel hoppers with easy-change plates for many crops. Fertilizer attachment available. Adjustable row spacing and seeding rates.
- ★ **Much More**—Easy-clean hoppers . . . wide choice of ground-engaging components and accessories . . . and more. Come in now!

**Plant with FORD on our Easy Terms!**



**Elizabethtown Farmers Supply, Inc.**

Elizabethtown  
Phone 367-1341

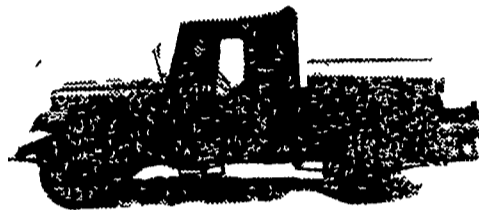
**Grimm's Ford Tractor & Farm Service**  
Park Ave., Quarryville  
Ph. ST 6-2597

**Keener Equip. Co.**  
Rts. 230 & 72, Lancaster  
Phone 569-9861

**Allen H. Matz**  
Denver  
267-5602

**Sauder Bros.**  
New Holland  
Phone 354-8721

**NITROGEN SERVICE**



WE WILL TOP DRESS YOUR

- Pasture
- Small Grain
- Grass, Hay & Forage

WITH: UREA—Ammonium Nitrate or Cyanamid  
ALSO—BROADCAST to Plow Down For Corn

392-4963

**ORGANIC PLANT FOOD CO.**

GROFFTOWN RD. Next to the Waterworks

Get a low-cost Thrif T. Fulton

**AUTO LOAN**



If you're in the market for a new car, visit the Fulton first and arrange for a low-cost Auto Loan. Then, as a cash buyer, make a better deal on the car of your choice.

**FULTON National BANK**

OF LANCASTER

PENN SQUARE • MCGOVERN AVENUE • MOUNTVILLE  
EAST PETERSBURG • AKRON • GAP  
Member Federal Deposit Insurance Corp.

**ETHOXYQUIN protects Vitamins A and E and Pigments in the feed—AND during digestion**



feed your replacement chicks

**RED ROSE**  
CHICK STARTER  
OR  
STARTER & GROWER

**NOW Contain ETHOXYQUIN**

For Added Growth Protection

Red Rose Chick Starter and Red Rose Starter & Grower provide your chicks the early nutrition they need to develop into high quality producers. Both of these feeds contain all the vitamins, antibiotics growth stimulants and vital nutrients chicks need to insure quick feathering, vigor and energy.

This season — aim for better egg profits. Start with good chicks — start with RED ROSE.

**Ammon E. Shelly**  
R. D. 2, Lititz, Pa.

**A. S. Groff**  
North Queen Street  
Lancaster, Pa.

**Mountville Feed Service**  
R. D. 2, Columbia, Pa.

**West Willow Farmers Association**  
West Willow, Pa.

**Brown & Rea**  
Atglen, Pa.

**Henry E. Garber**  
R. D. 1, Elizabethtown, Pa.