

Market News Reports

At Lancaster Yards

WEEKLY REVIEW

Friday, March 1

CATTLE: 2450 Compared with 1901 head last week. Supply includes 60 percent slaughter steers and 25 percent feeder steers. Trading slow. Compared with last week's close, slaughter steers generally 50 lower with some sales 25-75 lower. Cows 25-50 lower with most decline on Canner grade. Bulls steady. Feeder steers weak.

Slaughter steers: Choice 90-1350 lbs 24 75-25 75, few loads and lots High Choice with end Prime 1050-1247 lbs 26 00-26 15, few head Choice 1035 lbs 26 75. Load 1413 lbs Choice 24 00, Good to low Choice 23 00-25 00, Standard 21 00-23 00

Heifers: Few lots Good and Choice 800-919 lbs. 23 00-24 50.

Cows: Cutter and Utility 14.25-16 75, Canner and low Cutter 12 50-14 25. Shelly canner down to 10 50

Bulls: Utility and Commercial 19 00-22 75, Good side 22 00-24 50

Feeder steers: few lots Good and Choice 600-850 lbs 23 00-25 50. Few lots Choice 450-603 lbs 26 00-26 90, Medium and Good 650-800 lbs 21 00-22 00

CALVES: 550 Compared with 523 head last week

Vealers: weak. Trading moderately active. Good and Choice vealers 31.00-37.00, Choice and Prime 37.00-42.00, Standard and low Good 27.00-31.00, Utility 21.00-27.00.

Hogs: 1300. Compared with 1400 head last week. Trading moderately active.

Barrows and gilts: mostly 25 lower. Sows steady.

Barrows and gilts: U.S. 1-2 190-230 lbs 16 50-17 00, early in week to 17 50, No 1 190-225 lbs early in week 17 50-18 00, 1-3 190-240 lbs 16 00-16 50, 2-3 240-260 lbs. 15.25-16 00

Sows: U.S. 1-3 300-450 lbs 11 50-13 00, 2-3 450-600 lbs 10.00-11 50.

SHEEP: 100. Compared with 125 head last week. Woolled slaughter lambs steady. Trading moderately active. Few lots Choice 70-100 lb. woolled slaughter lambs 22.00-23 00, Good 18 00-22 00, 2 lots Choice and Prime 83-98 lb spring slaughter lambs 24 00-26 00.

Vintage Sale

Tuesday Feb. 26

CATTLE: 448. Supply includes 42 percent cows. Compared with last Tuesday's market, slaughter steers unevenly steady to 25 higher. Cows 25-50 lower. Bulls strong.

Choice 950-1300 lb. slaughter steers: 24 75-25 75, several 26 00-26 60, Good to low Choice 1300-1450 lbs 22.75-25.50, Standard 21 00-23.00, Utility 19 00-21.00.

Cutter and Utility cows: 14-25-16.50, several to 16.85, Canner and low Cutter 13 00-14 50, Shelly canner down to 11 00.

Utility and Commercial bulls: 20 00-22 75.

CALVES: 399. Veal steady

Slaughter steers: About 15 loads Prime 1200-1442 lbs 25 75 and on Monday two loads Prime 1256-1370 lbs. 26 00. Bulk High Choice and Prime 1100-1425 lbs 25 00-25 50 Bulk Choice 900-1350 lbs 24 00-25 00, few loads mostly High Choice 1000-1200 lbs 25 25. Choice 1350-1550 lbs 23 50-24 25. Bulk Good 900-1200 lbs 22 50-24 00 Few Standard 19 00-22 00. Load Utility 18 00

Slaughter Heifers: Few loads High Choice and Prime 1006-1170 lbs. 24 75. Bulk Choice 850-1100 lbs 23 50-24 50. Good 22 00-23 25.

Chicago Cattle

CATTLE — Salable receipts first four days 27,300 compared 27,800 week ago and 30,200 a year ago

Slaughter steers: closed fully steady compared last Friday. Heifers steady. Cows and bulls steady. Few Feeders on offer little changed

FARM LOANS

Loans for Machinery, Livestock, Cars, Repairs, and any farm purpose. 10 - 35 year Farm Mortgages Full and part-time farms eligible

FARM CREDIT OFFICE

411 W. Roseville Rd. Lanc. 393-3921



Cackle, cackle little pullet! If you're laying eggs like bullets, And their shells are paper thin; Your mom and pop hadn't oughter been!

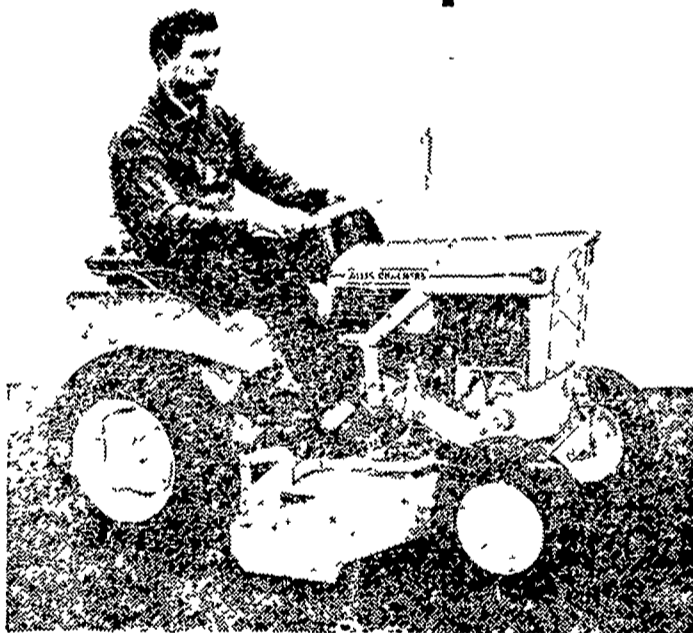
TRY

Honegger Layers For **Top Breeding**

J. HOWARD MOORE
R. D. #1
LITITZ, PENNA.
Phone: 626-5408

Windle's Hatchery
COCHRANVILLE, PA.
Phone: Atslen LY 3-5941

ALLIS-CHALMERS invites comparison



besides its modern lines, the **B-1, 7 1/4 hp Tractor** offers these big tractor features

- Deluxe cushioned seat and arm and back rests
 - "Easy-Lift" control lever
 - High "Arched" clearance
 - "No-Scalp" mowing
 - 3 live PTO outlets
 - 13 basic implements

FOR SALES AND SERVICE VISIT:

- | | |
|---|---|
| L. H. Brubaker
Lititz, Pa. | Snavely's Farm Service
New Holland, Pa. |
| Nissley Farm Service
Washington Boro, Pa. | Grumelli Farm Service
Quarryville, Pa. |
| N. G. Myers & Son
Rheems, Pa. | L. H. Brubaker
Lancaster, Pa. |

Lausch Bros. Equipment
Stevens, Pa.

Market News Reports

New Holland Auction

Thursday, February 28

CATTLE: 1035. Supply includes 35 percent cows. Compared with last Thursday's market, slaughter steers weak to 25 lower, with fills considered. Cows steady to 50 higher. Bulls 50 lower.

Few High Choice and Prime 1350-1450 lb. slaughter steers: 23.35-25.25, Choice 950-1300 lbs 24.50-25.60, several to 26.00, 1300-1450 lbs. 23.00-25.00, Good to low Choice 22.75-24.50, Standard 20 00-22 75.

Cutter and Utility cows: 14-50-15 60, Canner and low Cutter 13 00-14 50, Shelly canner down to 12 00.

Utility and Commercial bulls: 19 50-22 50 Good grade 22 00-23 50.

2 Lot mostly Choice grade 495-536 lb feeder steers: 26.25-26 50, few lots Good to mostly Choice 723-901 lbs 23.75-25.35.

CALVES: 324 Vealers grading Choice and Prime steady to 1 00 higher Good and below unevenly steady

Good and Choice vealers: 33-35.

Slaughter steers: About 15 loads Prime 1200-1442 lbs 25 75 and on Monday two loads Prime 1256-1370 lbs. 26 00. Bulk High Choice and Prime 1100-1425 lbs 25 00-25 50 Bulk Choice 900-1350 lbs 24 00-25 00, few loads mostly High Choice 1000-1200 lbs 25 25. Choice 1350-1550 lbs 23 50-24 25. Bulk Good 900-1200 lbs 22 50-24 00 Few Standard 19 00-22 00. Load Utility 18 00

Slaughter Heifers: Few loads High Choice and Prime 1006-1170 lbs. 24 75. Bulk Choice 850-1100 lbs 23 50-24 50. Good 22 00-23 25.

SHEEP: 5. Not enough on sale to establish a market

00-39.00, Choice and Prime 39 00-45 00, few to 48.00, Standard and low Good 28.00-33 00, Utility 22.00-28.00.

Dairy cattle sold on a steady market at the February 27 auction at New Holland. Receipts included 92 cows, three bulls and ten heifers.

Fresh Holstein cows brought \$275-375; Guernseys, \$150-210, and other breeds brought \$150-225. Stock heifers were \$45-120 and stock bulls were \$150-225.

At the February 25 horse sale 186 head sold at steady prices. Mules by the pair brought \$300-595. Pony mares were \$40-85 and gelded ponies brought \$25-80. Riding horses were \$110-250 and driving horses brought \$110-225. Killers were 7 to 7 1/2 cents a pound

At the February 25 hog sale the 489 hogs brought steady prices. Retail hogs to local butchers brought 17-18 50 while wholesale hogs to the packers were 16.16 75. Heavyweight hogs brought 15 to 16.

The 98 calves at the February 25 sale sold steady with choice and prime at 38 to 43, good and low choice at 33-37, standard at 25-32, and common 18 to 24.

Buyer of Oak, WALNUT, Poplar, ASH, etc.
C. J. CHARLES LUMBER
New Providence, Pa.
Phone ST 6-3108



Starts 'Em Right

... Costs less to feed than whole milk!

- Easy to mix—Easy to feed
- Looks like milk—Stays mixed
- Reduces digestive upsets
- Rich, nutritious, uniform

Milk Replacer for Calves, Lambs, Pigs, Kittens

calfnip

Get WAYNE CALFNIP from

J. K. STAUFFER & SON Lawn & Bellaire	POWL'S FEED SERVICE R. D. 1, Quarryville R. D. 2, Peach Bottom
LIME VALLEY MILLS R. D. 1, Willow Street	GRUBB SUPPLY CO. Elizabethtown
DUTCHMAN FEED MILLS, INC. R. D. 1, Stevens	C. E. SAUDER & SONS R. D. 1, East Earl
ROHRER'S MILL R. D. 1, Ronks	H. M. STAUFFER & SONS, Inc. Witmer - Ronks - Leola
MOUNTVILLE FEED SERVICE R. D. 2, Columbia	MILLERSVILLE SUPPLY CO. Millersville

HERSHEY BROS.
Reinhold