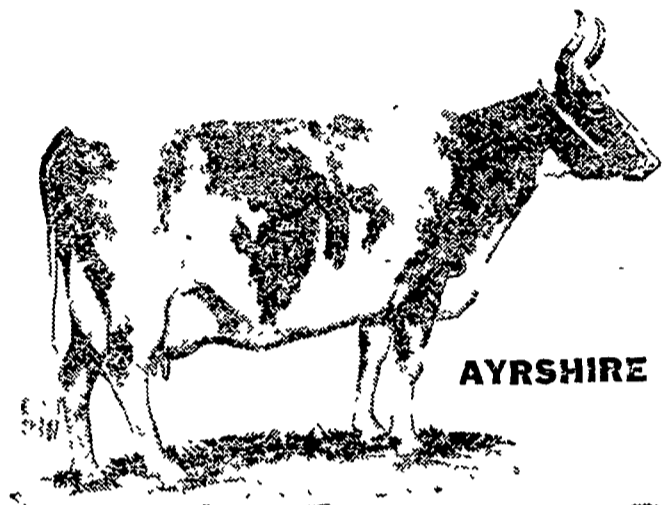


WHAT DO THESE FOUR COWS HAVE IN COMMON?

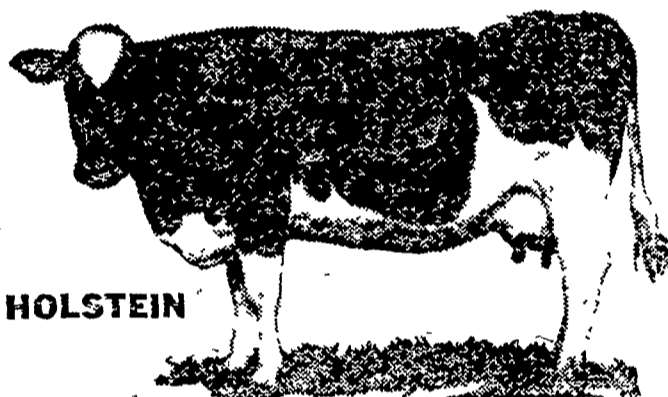
They All Produce More Milk At Less Cost
With Green Pastures 16% Dairy Pellets! Here's Why....



AYRSHIRE

1. **THE PROTEIN QUALITY** in these Pellets. A cow can make part of its required amino acids in the rumen but an efficient ration must supply the balance. Therefore, not just protein but **quality** in the amino acids is essential.

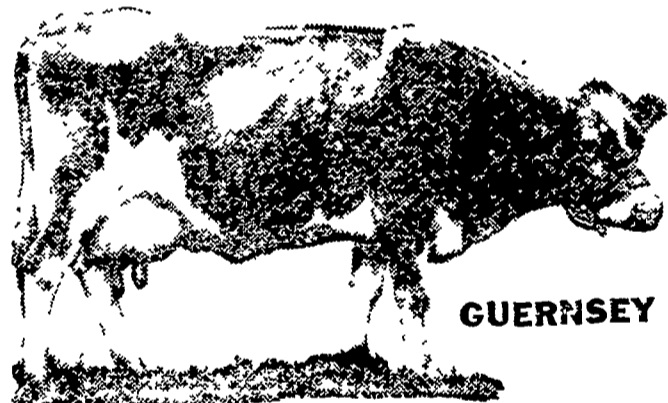
2. **THE HIGH ENERGY VALUE** (low fiber). This is another way of saying that GREEN PASTURES 16% Pellets are very high in total nutrient value.



HOLSTEIN

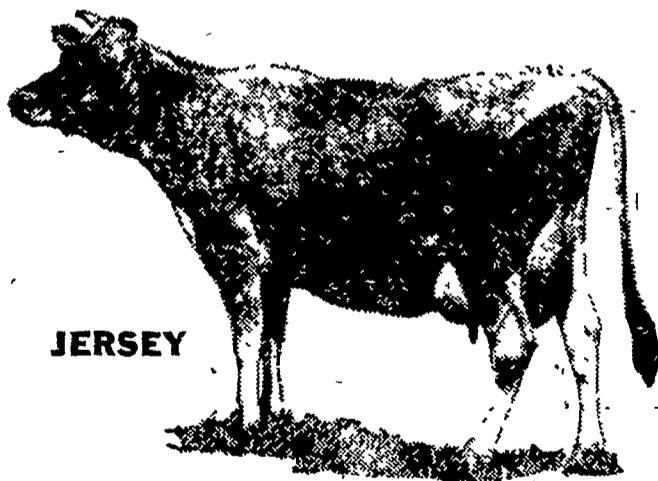
3. **COMPLETE MINERAL BALANCE**. All body functions require minerals. In GREEN PASTURES 16% Pellets you'll find them accurately balanced and supplied.

4. **VITAMIN SUPPLEMENTATION** (According to latest proven nutritional findings). Including the new recognized proper levels of added Vitamin A and D in stabilized form.



GUERNSEY

Progressive dairymen who are feeding MILLER & BUSHONG GREEN PASTURES 16% Pellets recognize these outstanding values and their producing herds are responding by more efficient and lower cost milk production.



JERSEY

For Assistance In

- **PROGRAMMING**
- **PLANNING**
- **MANAGEMENT**

Make an Appointment with Our Dairy Specialist, or Call Us Direct at Lancaster 392-2145



MILLER & BUSHONG

Rohrerstown, Pa.

• **FINEST SERVICE ANYWHERE** •

