

# All Broilers Are Sold

Volume of live broilers sold at the Lancaster Poultry Center this week was more than four times as great as the previous week, but prices on the larger volume dropped only fractionally.

At the February 7 auction 87,100 broilers in 14 lots sold at prices ranging from 17 to 17.8 for a sale average of 17.24

Three lots of pullets, including 4,600 head, brought 21-21.2, while three lots of 2,900 roasters sold for 22-24.9. Two lots including 1,350 head of heavy fowl crossed the block at 25.2 to 25.5, and 1,850 leghorn fowl in two lots brought 9.75 and 10.2

Only one lot on offer failed to sell; this was a lot of 400 six-month-old heavy fowl which were bid to 16.

The Sale offered a total of 98,333 head in 25 lots and sold 97,933 head in 24 lots. Following is the complete sale report with lot number, seller, grower in parenthesis, amount and breed, age in weeks and days, buyer and price.

CODE: AAV - Arbor Acre

Vantress, H-F - Heavy Fowl; MCW - Moore's Chesty Whites; WV - White Vantress; C - Cockerels, HWMT - Hubbard White Mountain, L-F - Leghorn Fowl

1 Miller & Bushong (Russel F. Taylor), 6000 AAV, 8-3, Starr Poultry, 17.2, 2 Greider Leghorn Farms, 950 H-F, 15 mo, Marvin Sweigart, 25.2, 3 Same, 400 H-F, 15 mo, Daniel K Good, 25.5, Same, 133 Males, Daniel K Good, 9.1; 4. M&B (Elmer Beiler), 2400 MCW, 9-0, Daniel K Good, 17.0; 5 Same (Daniel Ebersole), 8600 WV, 9-2, Starr Poultry, 17.3

6 Same (Glenn R. Siegrist), 1900 WVC, 13-3, H. W. Longacre, Inc., 24.9; 7 Phares A Landis, 2000 WVC, 9-6, Carl B. Risser, 17.8, 8 M&B (Kenneth M Funk), 500 HWMT, 12-3, Daniel K Good, 22.0, 9. Same, 500 HWMT, 12-3, Daniel K Good, 22.0; 10. D E. Horn & Co. (Donald Dwell), 8000 WV, 9-2, H. W. Longacre, Inc., 17.3.

11. Same (James Weller), 9000 WV, 10-0, Starr Poul-

(Continued on Page 2)

# Live Broiler Price Improves

Delmarva reported live priced advanced nearly a quarter cent during the 24 hours ending 10 30 Friday morning. A good demand met the moderate offerings.

At farm prices of 16 to 17.2 for 1,072,900 head included 54,600 head purchased at Thursday's sale at the Eastern Shore Poultry Growers Exchange, Selbyville, Del. Forty two per cent of the sales were at 16.5 to 16.9.

With very few plants operating today, estimated slaughter for the week end was 651,000 head compared to the 643,000 head last week end.

The Delmarva broiler-feed ratio for the week ending February 2 was steady with the previous week at 3.3. Broilers averaged 16.47 per pound and mash cost the grower \$93.49 per ton.

The ratio for the comparable week a year earlier was 4.1 when broilers averaged 19.15 and mash cost \$93.52 per ton.

Georgia reported light offering but fully adequate for a nonaggressive interest. At farm prices were quoted at 15 with some lot under contract or prior agreements up to three quarters of a cent higher. Plant delivered prices ranged 15.5 to 16.5.

Estimated slaughter for the week end by Georgia processors was 1,574,000 head compared to 1,604,000 head last week end.

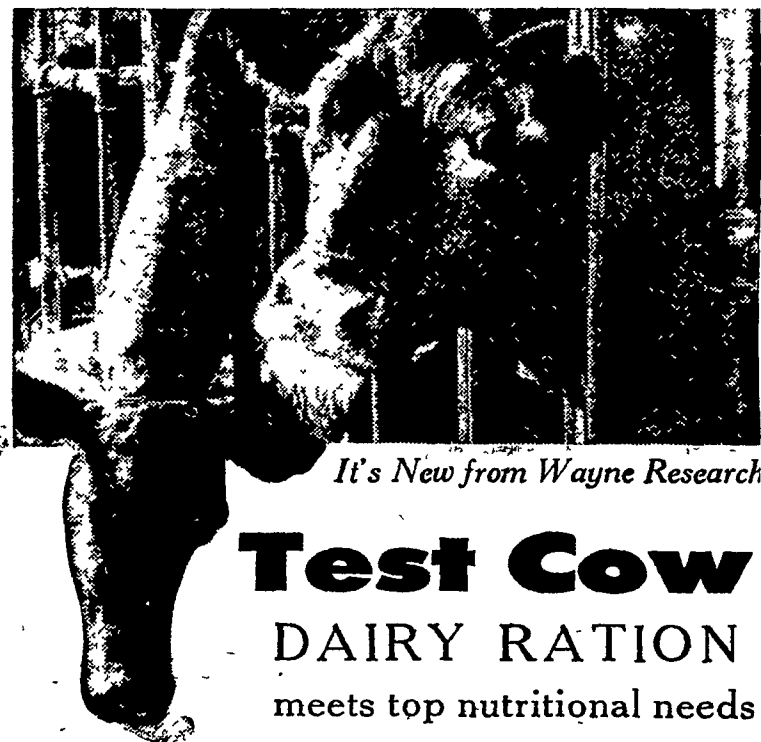
# Weekly New York Egg Mkt.

From Monday, February 4th to Friday, February 8th

	Mon.	Tues.	Wed.	Thurs.	Fri.
<b>WHITE</b>					
Ex.					
Fcy. Hywts	36 1/2-37	38	40	40-40 1/2	40-40 1/2
Fcy. Hywts	36 1/2	37 1/2	38 1/2-39	39	38 1/2-39
Fcy. Med	34-34 1/2	35	35	37-37 1/2	37-37 1/2
No 1 Med	34	35	35	37-37 1/2	37-37 1/2
Pullets	33	33	33	33	33
Peewees	26	26	26	26	26
<b>BROWN</b>					
Ex					
Fcy Hywts.	37 1/2	38 1/2	40	40	41
Fcy Hywts.	36 1/2-37	38	39	39	39 1/2
Fcy Med.	35	35	35	37-37 1/2	37-37 1/2
Pullets	33	33	33	33	33
Peewees	26	26	26	26	26
<b>MIXED</b>					
Fcy Hywts.	36-36 1/2	37 1/2	38 1/2	38 1/2	38 1/2
No 1 Med.	34	35	35	37-37 1/2	37-37 1/2
Pullets	32	32	32	32	32
Standards	34-34 1/2	35	36 1/2	37	37
Checks	31 1/2	31 1/2-32	32-33	33	33 1/2

TREND: Market irregular with varying demand in relation to supplies.

Copyrighted 1963 By Urner-Barry Co.



It's New from Wayne Research

## Test Cow DAIRY RATION meets top nutritional needs

High producing cows have high nutritional requirements. Wayne Test Cow Ration has met the critical feeding tests at all levels of production, with all kinds of roughage. Proved by exacting Wayne Research Farm tests. Ingredient Quality and Ingredient Balance are combined in West Test Cow Ration to produce more milk, better growth and develop the fetus at the same time. Ask us for details.

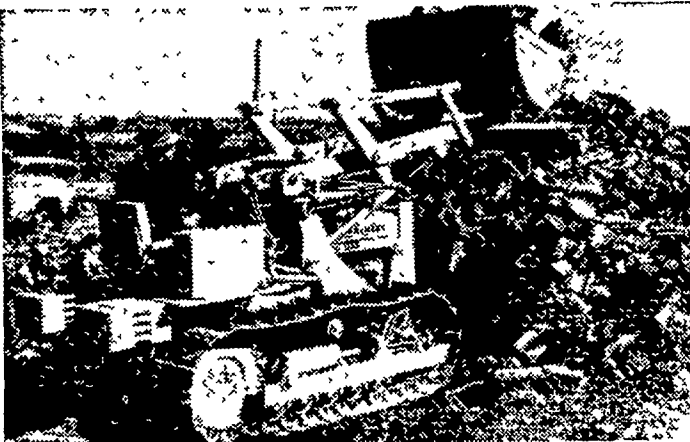
To Help Your Dairy Herd STAY OUT IN FRONT



- |  |   |
|--|---|
| <b>J. K. STAUFFER &amp; SON</b><br>Lawn & Bellaire   | <b>POWL'S FEED SERVICE</b><br>R. D. 1, Quarryville<br>R. D. 2, Peach Bottom |
| <b>LIME VALLEY MILLS</b><br>R. D. 1, Willow Street   | <b>GRUBB SUPPLY CO.</b><br>Elizabethtown                                    |
| <b>DUTCHMAN FEED MILLS, INC.</b><br>R. D. 1, Stevens | <b>C. E. SAUDER &amp; SONS</b><br>R. D. 1, East Earl                        |
| <b>ROHRER'S MILL</b><br>R. D. 1, Ronks               | <b>H. M. STAUFFER &amp; SONS, Inc.</b><br>Witmer - Ronks - Leola            |
| <b>MILLERSVILLE SUPPLY CO.</b><br>Millersville       | <b>MOUNTVILLE FEED SERVICE</b><br>R. D. 2, Columbia                         |

HERSHEY BROS.

## TOUGH PERFORMER... MONEY-MAKER



Solid construction is apparent in the tough track assembly, with full overlapping grousers of the Allis-Chalmers H-3 and HD-3 Tractors. Take a look at the drive sprockets; they're husky and tough. Get a close-up of the clean lines that make mounting of equipment easy and solid.

Watch this tough performer in action. See what SHUTTLE Clutch can mean. You use a single lever to change direction — forward or reverse — there's no foot clutching or gear shifting, and the tractor is always under complete control. Loading cycles are smooth, fast — real timesavers on the job.

Allis-Chalmers compact crawlers and wheel-type industrial tractors and equipment can be money-makers for you.

H-3 has 43-hp gasoline engine, HD-3, 40-hp diesel.

FINANCE FOR PROFIT — ask us about Allis-Chalmers time payment plans tailored to your equipment needs.

## ALLIS-CHALMERS SALES AND SERVICE

- |   |  |
|---|--|
| <b>L. H. Brubaker</b><br>Lititz, Pa.                | <b>Snavey's Farm Service</b><br>New Holland, Pa. |
| <b>Nissley Farm Service</b><br>Washington Boro, Pa. | <b>Grumelli Farm Service</b><br>Quarryville, Pa. |
| <b>N. G. Myers &amp; Son</b><br>Rheems, Pa.         | <b>L. H. Brubaker</b><br>Lancaster, Pa.          |

**Lausch Bros. Equipment**  
Stevens, Pa.

### Eat a Good Breakfast

An on-the-run quickie breakfast on a cold day just won't do if you hope to stay in reasonably good health, remind Penn State extension food specialists. Take a few minutes longer to eat nourishing food. Any easy-to-eat protein-rich food, such as eggs, makes a fine choice for the first meal of the day. A hearty meal will help every family member to do better during the day.

### Keep Hens Laying

So long as layers get plenty of food there's less danger of a winter slump in egg production. F. H. Leuschner, Penn State extension poultry specialist, says housing, health, weather, or a combination of these may affect feed consumption, but feed management is always important.

**LOANS**

FOR ANY FARM PURPOSE  
MADE THE FARMER'S WAY

LANCASTER  
PRODUCTION  
CREDIT ASS'N  
411 West  
Roseville Rd.  
Lancaster, Pa.  
393-3921  
In. Lane.

**HONEGGER Layers**

Other hens  
can't hold a Candle  
To  
**"HONEGGER LAYERS"**

Although . . .  
(We hear they'd like to!)  
Because  
Honeggers makes  
the 'best' seem ordinary.  
Step up  
To  
Quality  
at an average price —

**J. HOWARD MOORE**  
R. D. #1  
LITITZ, PENNA.  
Phone: 626-5408

**Windle's Hatchery**  
COCHRANVILLE, PA.  
Phone: Atglen LY 3-3941