

Two Promotions Announced By Hoffman Seeds

M T Kauffman 154 Church Street, Landisville, has now been placed in charge of Funk's G-Hybrid seed corn activities at the Landisville seed concern. He has worked for Hoffman for 27 years. He assisted in some of the earliest hybrid seed corn testing in Pennsylvania, starting in 1936, and helped produce the first commercial crop of hybrid seed corn in Pennsylvania in 1939. He will contract for the production of all hybrid corn supplies for Hoffman and coordinate

Hoffman's relations with the many other Funk's — G Associate Growers who operate over all the most important corn-growing areas of the U S

Chris M Nissley, 658 N Pine Street, Lancaster, has been put in charge of "Hoffman Seed Man" sales. He will direct the activities of Hoffman's several hundred farmer-representatives who sell all over Pennsylvania and into bordering states. He formerly supervised these activities in 33 counties, having been active in sales work for Hoffman since 1938. Nissley is also serving at the present time as Vice-President of the Pennsylvania Seedsman's As-

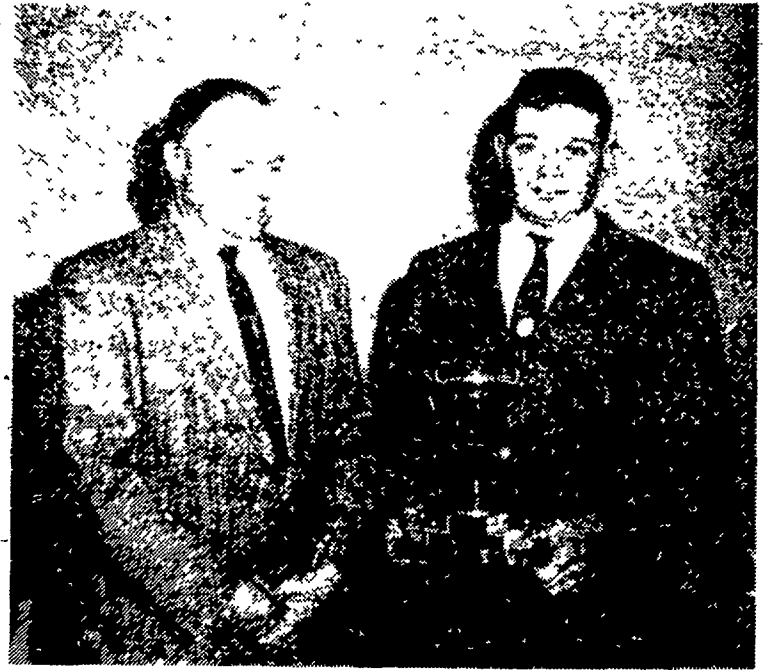
sociation and Vice-President of the Pennsylvania Grassland Council.



M. T. KAUFFMAN



CHRIS M. NISSLEY



WINNER IN THE STATE FIVE ACRE Corn contest was Robert L. Gross, Manchester R1, York Co. Here on the right he shows the trophy to his father, Harold Gross. He planted Funks G-96 on 100 foot wide contour strips on May 20. The corn followed potatoes, wheat, clover-timothy and corn in the rotation. He plowed down 300 pounds of ammonium nitrate and 10 to 12 tons of manure with a moldboard plow to a depth of eight inches. The soil was prepared with a spring tooth harrow and a cultipacker. At planting he added 400 pounds of 10-10-10 per acre on the row and planted the seed two inches deep. The rows were 40 inches apart and the stalks were seven inches on the row, which gave him a population of 18,580 stalks per acre. He cultivated twice and sprayed pre-emergence with Atrazine. On October 19 he harvested 207.5 bushels per acre.

Ready-To-Serve Foods

Homemakers like heat-in-the-bag frozen foods, report Harold Neigh, Penn State extension specialist in consumer economics. In a survey of

foods make repeat purchases. This is proof of their acceptance

The trend of Pennsylvania potato growers is to plant larger and larger acreages or none at all.

It pays to buy from Reist

9 ALFALFAS to choose from
10 CLOVERS to choose from

INOCULATED BEFORE DELIVERY - FREE

REIST SEED COMPANY

Mount Joy, Pa.

New Breakthrough in Dairy Nutrition shows 10% More Milk from Same Amount of Feed with New Ful-O-Pep

Cattle-Izer

Dairy Feed

Almost four years of testing and development at the Ful-O-Pep Research Farm show that new Catalyzer Dairy Feed increases energy production in the rumen by as much as 20% over regular Super Milking Feed—and an average of 10% more milk after just 4 weeks on feed.

Ful-O-Pep Catalyzer Dairy Feed contains only natural feed ingredients; you feed it as you would feed any ration, along with your regular roughage.

Let us give you more information

Morgantown Feed & Grain
Stevens & Morgantown

Grubb Supply Co.
Elizabethtown

Millport Roller Mills
Millport

Kirkwood Feed & Grain
Kirkwood

S. H. Hiestand & Co., Inc. H. M. Stauffer & Sons, Inc.
Salunga Leola and Witmer

Do ORTHO UNIPELS Increase YIELDS and PROFITS?

Here are the 1962 results of 14 corn trials, with ORTHO UNIPELS compared to the farmer's regular fertilizer.

COUNTY & STATE	15.5% Shelled Corn, bu/A Grower Yield	ORTHO Yield	Bushel Increase	Profit Increase
York, Pa.	86.7	100.1	13.4	\$ 5.16
York, Pa.	93.2	108.2	15.0	2.55
York, Pa.	99.5	107.0	7.5	-4.18
Chester, Pa.	153.8	165.2	11.4	3.45
Chester, Pa.	100.0	105.0	5.0	3.03
Cumberland, Pa.	95.4	108.5	13.1	17.17
Lancaster, Pa.	91.1	107.1	16.0	5.55
Lancaster, Pa.	112.0	131.0	19.0	12.62
Lancaster, Pa.	129.0	135.0	6.0	4.11
Lancaster, Pa.	124.0	134.0	10.0	9.11
Franklin, Pa.	84.6	129.0	44.4	33.62
Franklin, Pa.	90.2	114.7	24.5	30.87
Carroll, Md.	97.2	119.0	21.8	10.41
Carroll, Md.	118.9	136.6	17.7	4.00
Mean of 14 Tests	102.67	114.78	12.11	\$ 9.82

* Fertilizer investment per acre and 15.5% shelled corn at \$1.25 per bushel considered in arriving at profit increase figure.

Average yield increase 12.11 bushels, average profit increase \$9.82 per acre.

SEE US NOW ABOUT PROGRAMING YOUR CROPS
for increased YIELDS and PROFITS

Ortho Unipels is a Registered Trade Mark

P. L. ROHRER & BRO., INC.

SMOKETOWN, PA
Phone 397-3539