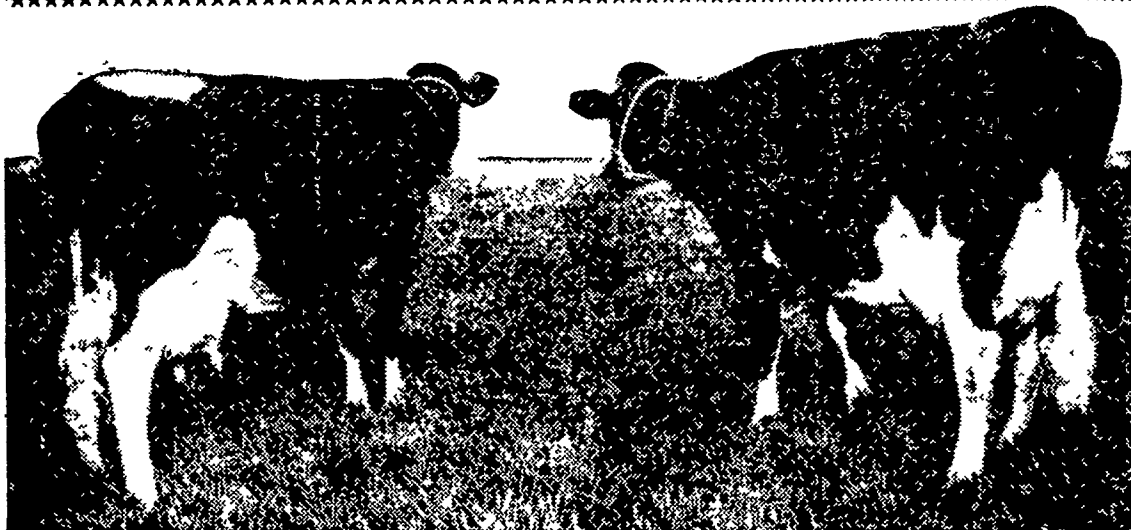


CHECKERBOARD

service bulletin

Which is the better cow?



YOU BE THE JUDGE!

These two cows are from the Purina Dairy Center herd. They're about the same age. Each has calves regularly. Each has produced 15,000 lbs. of milk in her 10 months lactation.

THE COW ON THE LEFT should be the heavier producer, based on her bred-in ability. But she's too thin (because of the experiment she's been on). She's been producing at the expense of her own body.

Body condition is most important in keeping a herd milking at their peak year after year. Body condition depends on proper feeding during the dry period . . . and is maintained by feeding a good milking ration.

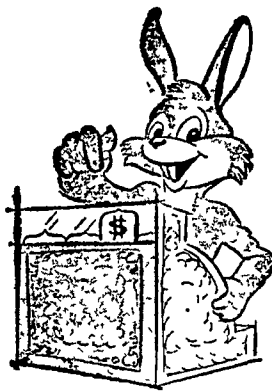
Ask us about Purina's Dairy Feeding Program . . . built by 34 years of research with thousands of cows. It's sure to help your cows give all the milk they're bred to give . . . to help you make top profits from your herd.

Rabbits Go Commercial

American housewives love variety in the meat counter at their supermarket and they'll pay for it, too!

The growing demand for delicious farm-raised, all-white rabbit meat creates a new commercial farm opportunity. Rabbit production, "The Purina Way" may be a sound, profitable (but not get-rich-quick) business, either part-time in the backyard or full-time on the farm.

Talk with your Purina salesman about this opportunity. If you raise rabbits now . . . feed Purina Rabbit Chow, developed at the modern 84-doe rabbitry on the Purina Research Farm, Gray Summit, Missouri.



Do You Know . . . Sows Produce 100 Gallons Of Milk Each Year

A brood sow is a factory — a "pig factory" — and she needs help to produce to capacity.

At the Purina Research Farm on the Purina Hog Program, sows each year produce more than 100 gallons of milk; wean 18 pigs; and maintain their own bodies. These are mighty big jobs.

Purina Sow Chow — fed with your grain — is designed and researched especially for these big jobs. Get Sow Chow at our store with the Checkerboard Sign.



John B. Kurtz
Cedar Lane

S. H. Hiestand & Co
Salunga

Whiteside & Weickel
Kirkwood

John J. Hess, II
Intercourse - New Providence

John B. Kurtz
Ephrata

Wenger's Feed Mill, Inc.
Rheems

Ira B. Landis
Valley Road, Lancaster

James High
Gordonville

J. H. Reitz & Son, Inc.
Lititz

Warren Sickman
Pequea

John J. Hess
Kinzers - Vintage

Seedsman

(Continued from Page 4)

at the first of the year Alfalfa seed is getting even tighter than it was at that time. Clover tightened up somewhat too because of the high buying movement of alfalfa, and I also understand there was some export Japan made a purchase of some 4 million pounds of clover seed from Canada, and the U.S. and Canada trade back and forth.

There seems to be plenty of grass around. There was an exceptionally good crop of ryegrass seed, but in spite of the big supply, ryegrass seed has advanced almost \$2.00 per hundredweight in the past two weeks.

I think farmers would be wise to use more cover crops. Penn State tells us that Lancaster County has a lower organic matter content in its soils than any other county.

There is very little good germinating timothy around. There is some poor quality timothy on the market, but in general, the grass seed situation looks pretty good.

ROBERT METZLER,
Plant Manager

Rest Seed Co., Mt. Joy

Some clovers and some alfalfas are very tight, especially certified Buffalo alfalfa and certified Pennscott red clover.

Pennscott clover prices to the grower dropped some in the past few years and many growers stopped producing seed. We got what we could get, but if we sell out we can't get it replaced any more.

We have enough DuPuits alfalfa to take care of our needs. The suppliers have reported that Certified Buffalo, Atlantic and Cayuga are all sold out.

Grass seems to be in good supply but one thing that could tie up orchard grass, especially S-37 is the boat strike.

Summer and fall seedings is where we are going to have our trouble. I believe there is enough seed around for spring seeding. We have an exceptionally good supply of Vernal alfalfa, and I think it will do better than Buffalo. We got a good buy on it and we bought twice as much as we normally do.

We handle open formula seed corn, and there seems to be plenty of that around. Bookings are about the same as this time last year.

Amos Funk

(Continued from Page 1)

in June, 1 1/2 inches in July, 1 6 inches in August, 1 4 inches in September and 0 9 inch in October. He said a rule of thumb in irrigating is to apply an inch of water a week when rainfall is less than an inch.

An inch of water applied to tasseling corn can double yields, compared with a field that has been irrigated a full season, Funk said. In this case, timing of the irrigation is at the critical period of growth.

Strawberry growers have found, he said, that plants irrigated in the fall when the blossoms are forming in the crown will show an increase of 20 per cent production.

In a business session, several growers charged that contract sprayers for railroads, public utilities and highway departments have caused considerable damage to vegetable and fruit crops by "misusing herbicides."

The state vegetable group, headed by Paul Rowe, Strasburg R1, named a committee to instigate legislation should the practice continue.

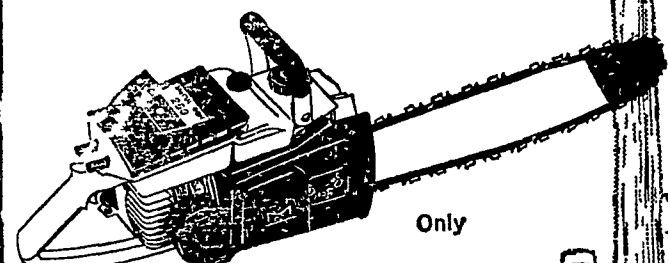
The conference also heard reports on direct seeding of tomatoes, vegetable nutrition, peat pots, insect problems, marketing, pesticides and a new plastic mulcher.

Before you buy any chain saw!

Check McCULLOCH'S new 250 direct drive

More features—more power—more value

- Push button primer
- Full 16" welded tip bar
- High performance muffler
- Reborable cylinder
- Famous McCulloch engineering
- Weatherproof ignition
- Full cut handle
- An plastic grip
- Famous McCulloch chain
- Fingertip controls
- Horizontal piston
- Fully enclosed carburetor



\$169.95 Plus Sales Tax

The 250 offers features never before available on a saw in its price range. When you shop for a new saw use this check list and make sure you get your money's worth!

For a limited time with the purchase of a new McCulloch 250, you may purchase a \$22.13 retail value chain maintenance kit for only \$4.95 (suggested special price). This Mac-Pac includes the world-famous Nygran File N' Joint, McCulloch Bar Guard, Depth Gauge Tool, and 2 McCulloch Files — for precision chain sharpening and protection.

LANDIS BROS., INC.

Manheim Pike

Lanc. 393-3906

McCULLOCH CHAIN SAWS