

CHECKERBOARD

Service Bulletin

Get up to
a **TON**
more milk
per
cow...



with **PURINA COW CHOW D**

America's dairy cows are producing more milk than ever before. And a Purina milking ration, Cow Chow D, is helping many of them make up to a ton more.

Balance of quality ingredients is the secret behind the high efficiency of Purina Cow Chow D.

Purina's Research herd of Holsteins and Guernseys has been giving nutritionists factual information on Purina

Dairy Rations for over 30 years. This milking string proved the value of Cow Chow D by producing an average of 2067 pounds more milk per cow over that produced on a regular 16% milking ration.

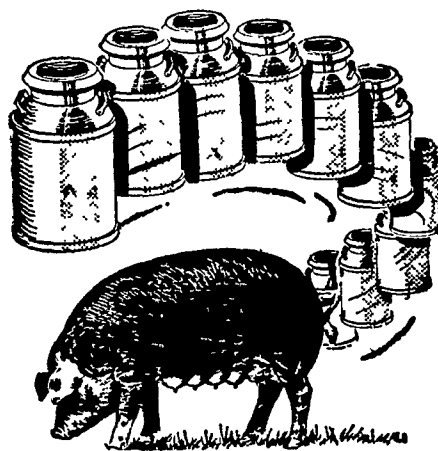
Put Purina Research to work on your farm by feeding Cow Chow D. Chances are, like other Northeastern dairymen, you'll find this ration will help your cows make more milk . . . and more profit.

Do You Know . . . Sows Produce 100 Gallons Of Milk Each Year

A brood sow is a factory — a "pig factory" — and she needs help to produce to capacity.

At the Purina Research Farm on the Purina Hog Program, sows each year produce more than 100 gallons of milk; wean 18 pigs; and maintain their own bodies. These are mighty big jobs.

Purina Sow Chow — fed with your grain — is designed and researched especially for these big jobs. Get Sow Chow at our store with the Checkerboard Sign.



CUT CRD IN DAY-OLD CHICKS

Now . . . you can help knock out costly CRD infection in day-old chicks with Purina Tylan Soluble. Tylan Soluble contains tylosin, a new, fast-acting antibiotic that cuts down the most common cause of CRD in baby chicks.

When your chicks first arrive, add this powerful Health Aid to their drinking water. We can supply you with Purina Tylan Soluble in economical 100-gram or 2-gram packets.

Knock out CRD with new Purina Tylan Soluble in chick drinking water.



John B. Kurtz
Cedar Lane

S. H. Hiestand & Co
Salunga

Whiteside & Weickel
Kirkwood

John J. Hess, II
Intercourse - New Providence

John B. Kurtz
Ephrata

Wenger's Feed Mill, Inc.
Rheems

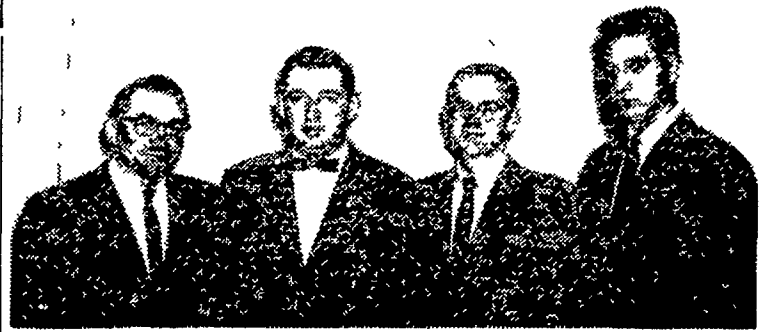
Ira B. Landis
Valley Road, Lancaster

James High
Gordonville

J. H. Reitz & Son, Inc.
Lititz

Warren Sickman
Pequea

John J. Hess
Kinzers - Vintage



OFFICERS OF THE NEW HOLLAND Young Farmers Association pose after their election Friday night. President, Carl Weaver, New Holland R1, is far right. Other officers are left to right, Carl Fisher, East Earl R1, vice president; Eugene Eberly, New Holland R2, treasurer, and Carl R. Martin, East Earl R1, secretary.

County Firms Buy Show Steers

Lancaster County firms bought a total of 19 head of prime show cattle at the Pennsylvania Farm Show last Friday. A farmer cooperative in the county purchased the champion hen turkey.

Kunzler and Company, the Lancaster packing firm brought home a total of seven of the steers. Five head were purchased by the Ike Weaver Trucking Service, Ephrata, and four head were bought by Vintage Sales Stables, Paradise. Three head were bid in by Byers Food Market, Lancaster, and two head went to the New Holland Sales Stables, New Holland.

The champion dressed hen turkey, exhibited by Harry Lamparter, Mountville was purchased by Eastern States Farmers Exchange of Lancaster.

Kunzler and Company purchased the grand champion steer of the show, a 920 pound Angus shown by William Rishel of York, for \$165 per pound for a total of \$1,518.

The champion Hereford shown by Willis Hackman, Elizabethtown R2, brought 47 cents a pound from the West Shore Farmer's Market, Lemoyne for a total of \$437.10. The champion Shorthorn shown by Donna Hess, Strasburg R1, was bought for 35 cents a pound by El Centro Restaurant, Harrisburg, for a total of \$336.45.

The grand champion 4-H individual lamb, a 120 pound Hampshire exhibited by Fred \$156 a pound for a total of \$171.60. The buyer was George's Foodline Market, Bethlehem.

Kenneth Hess, Strasburg R1, got 64 cents a pound for his champion pen of three

lamb. The 300 pounds of lamb brought \$192 from Whitford Sales, Whitford. The reserve champion pen of Tom Hess, Bareville, went to Ernie's Meat Center, Sparta, N.Y. for 40 cents a pound and a total of \$160.

A champion carcass lamb of 38 pounds shown by Averill L. Royer, Lancaster, sold to Kunzler & Co., Inc., for \$130 a pound.

Grand champion lamb of the open show, a 105 pound shropshire returned a total of \$63 to Dennis Sangrey, Conestoga R2. The purchase price from Evans Thrift Market, Dillsburg was 60 cents a pound.

State Groups Elect Thirteen From County

Thirteen Lancaster Countians were elected to positions in statewide agricultural organizations at meetings last week in conjunction with the Pennsylvania State Farm Show in Harrisburg.

They are: Pennsylvania Livestock and Allied Industries Association — Walter M. Dunlap Jr., Lancaster, vice president; Harold Endslow, Marietta R1, and Christian C. Kunzler, Lancaster, directors.

Pennsylvania Chester White Swine Breeders Association — John E. Hastings Sr., Kirkwood R1, director. Pennsylvania Yorkshire Club — John H. Henkel, Strasburg R1, vice president. George E. Cogley, Ronks R1, secretary-treasurer.

Pennsylvania Duroc Swine Breeders Association — John E. Eby, Gordonville R1, and Frank Ruoss, Ephrata R2, both directors.

Pennsylvania Suffolk Sheep (Continued on Page 3)

Special Mule & Horse Sale

At VINTAGE SALE BARN

Saturday, February 16,

1:00 P.M.

Mules and Horses from Kentucky, Tennessee, Missouri, and Illinois.