

Farm Prices Show Slight Improvement

Prices received by Pennsylvania farmers in December for their agricultural products were down slightly from a month earlier, but up nearly four per cent from the previous year, according to a report issued this week by the Pennsylvania Crop Reporting Service.

The State Department of Agriculture agency attributed the slight decline to a seasonal drop in milk prices which more than offset the higher prices received for most meat animals and field crops.

The index of prices received which is a measure of the trend and changes in prices received by farmers, was 233 percent of the (1910-14 equals 100) base. This compared with 234 a month earlier and 225 a year earlier.

Most meat animal prices advanced during the month with calf and lamb prices leading the advance by \$90 and \$80 per CWT respectively. All meat animal prices were substantially above a year earlier.

However, wholesale milk prices, showing the usual seasonal decline was three per cent under the 1961 price. Prices received for broilers and farm chickens during the month showed a decline from the previous month while turkey prices showed a two cent increase. Egg prices remained steady.

Prices received for food grains and hay showed increases during the month. Partially offsetting these higher prices was a nickel decline in potato prices. Prices received for all crops was substantially above the same period a year earlier.

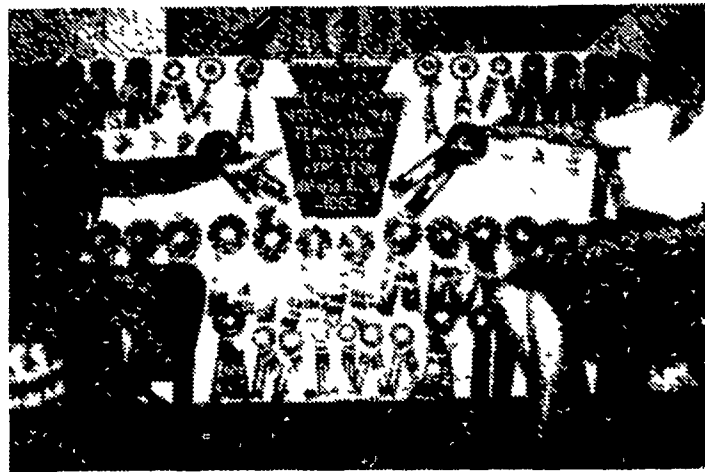
The Index of Prices Received by U.S. Farmers declined 1 percent during the month ended December 15 to 242 percent of its 1910-14 average. Lower prices for oranges, beef, cattle, hogs, lettuce, and wholesale milk were primarily responsible for the decrease during the month. Partially offsetting were higher prices received for feed grain, especially corn. The December index was 1 percent above a year earlier.

With the Parity Index up and farm product prices on slightly, the Parity Ratio declined 1 point during the month to 79 ending the year at the same level as a year ago.

Cardinal Rule

In using a dishwasher, the cardinal rule is to read and follow carefully the instructions that come with it, reminds Helen E. Bell, Penn State extension home management specialist. Note the directions for using special cycles such as the one for pots and pans. The dishwasher may look like one you've already used but it may be a new model requiring new methods.

The world fish catch in 1961 totaled 41.2 million metric tons, an increase of 8 percent over 1960 according to the Food and Agricultural Organization.



Clair and Ruth Hartman proudly display their Grand Champion Rosettes.

HOG RAISERS:

Look At The Record Of

Clearview Stock Farms

of Gratz, Pa., R. D. 1

Operated By

Clair and Ruth Hartman

Breeders of Registered Spotted Poland

China Hogs

In The Following Fairs and Shows In 1962

Shippensburg
Carlisle
Hagerstown, Md.
Gaithersburg, Md.
Syracuse, N.Y. (N.Y. State)
Timonium, Md. (Md. State)
Reading
Allentown
Gratz
Bloomsburg
Penna. Livestock Exposition, Harrisburg
Eastern National Livestock Show, Timonium, Md.

12 SHOWS

150 - 1st's
100 - 2nd's
42 - 3rd's
9 - 4th's
4 - 5th's

- GRAND CHAMPION SOW at 10 of 11 shows where Breeding stock was shown.
- GRAND CHAMPION BOAR at 9 out of 11 shows where Breeding stock was shown.
- RESERVE CHAMPION Individual Barrow over all Breeds at Maryland State Fair.
- RESERVE CHAMPION trio of Barrows over all Breeds at Maryland State Fair.
- RESERVE CHAMPION Spotted Poland China Barrow at Pa. Livestock Exposition.
- RESERVE CHAMPION Individual Barrow over all Breeds at Eastern National Livestock Show at Timonium.

NOTE: IN THE OPINION OF THE JUDGES, THESE BARROWS WERE OF EXCEPTIONAL UNIFORM QUALITY WITH A FINE MEAT TYPE FINISH WITHOUT EXTRA FAT! WE CONGRATULATE CLAIR AND RUTH AT THE FINISH OF ANOTHER SUCCESSFUL YEAR, AND OUR BEST WISHES FOR THE SAME IN 1963. THIS TOOK A LOT OF HARD WORK EXCEPTIONAL MANAGEMENT ABILITY AND A GOOD PROGRAM.



Son David Hartman (left) and boyfriend. Interest in livestock starts young here.

FEEDING PROGRAM USED AT CLEARVIEW FARMS IS —

GREEN PASTURES No. 12 Pig Starter Pellets

now with TYLAN for

17% Better Daily Gain and 7% Savings In Feed

GREEN PASTURES No. 14 Grower Pellets

(with Hygromycin to aid in control of Round and Whip Worms)

GREEN PASTURES No. 28 Sow and Pig Concentrate and Home Grown Grains

Try these PALATABLE, EFFICIENT feeds and the MILLER & BUSHONG Green Pastures Program on your farms.

YOUR HOGS WILL LIKE OUR FEEDS AND IT WILL SAVE YOU MONEY FOR SERVICE, CONTACT YOUR NEAREST MILLER & BUSHONG REPRESENTATIVE, OR CALL US DIRECT AT LANCASTER 392-2145



Miller & Bushong, Inc.

Rohrerstown, Penna.

Phone: Lancaster 392-2145

"FINEST SERVICE ANYWHERE"