

**MH-30**

(Continued from Page 1)  
of application makes their use prohibitive.

While the growth retarding chemicals can be sprayed over the top leaves, oils must be applied to the stalk where tops have been broken out. "This makes it a hand operation and therefore costly," he explained.

**HEAT FOR CURING**

The agronomist said tobacco growers would be working to his own advantage to use some form of heat in the curing process.

At the research farm a hot air fan system was used in one shed with excellent results, he said. The fan was turned on at 5 p.m. and removed at 8 a.m. for two days.

"The tobacco came down very nicely with absolutely no shed damage and was ready to strip in one month after hanging", he said.

He felt that having drying equipment could probably be used but cautioned growers to use heat with discrimination. An increase of about 10 to 15 degrees above outside temperatures will not cause any loss in quality, but if the difference is much greater some discoloration of the leaves may be noted.

**NEW VARIETIES**

In rebuttal to a suggestion that Penbel-69, a new variety released by the Pennsylvania State University this year, was low in quality, Engle said he felt that growers were topping the plant too high. He said the leaves on the variety grow closer together on the stalk, and some growers are trying to get too many leaves. He suggested not topping higher than 15 or 16 leaves. The new seedleaf variety needs a high level of fertility to produce the high yields of which it is capable, he said.

"I feel that the variety should not be written off on the basis of one year's trial," Engle said. He pointed to the high yield potential, disease resistance and consistently high quality leaf in experimental plots, and to the un-

usual growing season this year."

John Yocum, director of the Field Research Farm said experiments at the farm showed no adverse effects on quality of leaf or burning quality through the use of high levels of nitrogen fertilizer.

He recommended a 1-1-1 ratio fertilizer unless a soil test should show a special need in the soil. He said tobacco crops grown with high nitrogen rates had improved quality, according to a buyer evaluation committee. The old idea that tobacco needs a high level of Potash and low level of Nitrogen is not proving out, he said.

Yocum said his research has found no appreciable difference in results from several different rotations. "You can use almost any rotation in Lancaster County and still get good tobacco," he said.

**WEED CONTROL**

Engle reported that he is experimenting with several new chemicals for weed control. Some of them do not harm tobacco, but none gave consistent weed control. "Hand weeding and cultivation still looks like the best bet for weed control," he said.

**VARIED EXHIBITS**

In addition to myriad entries of horses, dairy and beef cattle, swine, sheep, and poultry and eggs, plus row upon row of field, orchard and garden crops, and a profusion of foods, clothing and home improvement items in home economics, the 47th Pennsylvania Farm Show, Jan. 7-11 in Harrisburg, will feature 260 full scale commercial displays.



**SEE US AT THE FARM SHOW NEXT WEEK**

One of us will be at the Allis-Chalmers Booth most of the week. Also visit the displays of some of our other manufacturers such as . . .

- Allis Chalmers
- New Holland
- C. A. McDade Co. Hay Fans  
Cunningham Hay Conditioners  
Mueller Bulk Milk Tanks  
Booth 361-362  
369-370
- Wayne Wyant  
1 - 5 incl. - 643-646
- A. E. MacKissic Co.  
16A - 16 - 18
- Van Dale  
Booth 312-313
- Ontario Drill  
Booth 305-307
- Smoker Elevators  
Booth 141-142E
- Starline Barn Cleaners  
Booth 394 - 395  
400 - 401
- Grove Wagons

**L. H. Brubaker**

350 Strasburg Pike, Lanc.  
Lititz, R. D. 3  
Ph. Lanc. 397-5179  
Strasburg 687-6002  
Lititz 626-7766



**FARM SHOW FOOD BOOTHS**

Five agricultural commodity organizations, all of which each year do a "land office" business at the Pennsylvania Farm Show in serving food products with which they are

identified, will return to the Dairymen's Association, at 47th exposition, Jan. 7-11, to Poultry Federation. They operate as part of the Food, and church stands will supply Center at the east end of the main food service main hall of the 14-acre Farm that includes a large cafe Show Building. They are the State Beekeepers Association, portable sandwich and milk Horticultural Association, Co-dispensing units to be located operative Potato Growers, throughout the building.

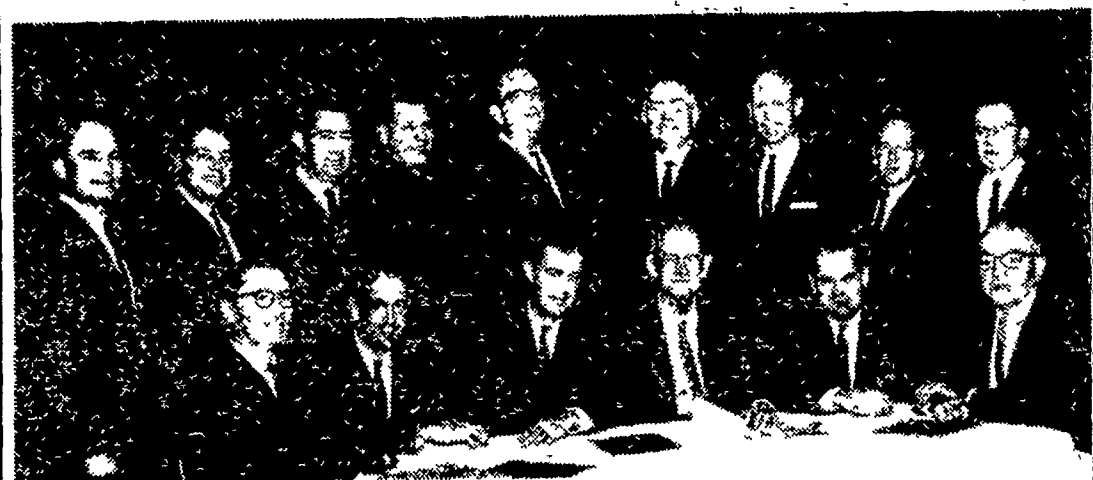


Aerial view of Miller and Bushong plant — one of the most modern, versatile, and efficient in the country — equipped for extreme accuracy in feed manufacturing.

**DOORWAY to GREATER POULTRY PROFITS**

THERE are many reasons why more and more successful poultrymen are turning to EARLY BIRD feeds. All of these reasons can be summed up in one word — CONFIDENCE. Confidence in Miller and Bushong's alert staff of nutritionists and research workers. Confidence in its well-trained and experienced feed milling experts. Confidence in its sales and service representatives and their help in solving production and management problems.

Miller and Bushong brings you feeds of the highest quality, formulated and blended to help you make the greatest possible profits from your poultry enterprise. Depend on TOP QUALITY, TOP PERFORMANCE, and TOP RETURNS with EARLY BIRD feeds.



Miller and Bushong's staff of specialists. Standing, left to right: Noah Gehman, Jack Renshaw, Glenn Herr and Charles Burkhardt, all sales and service; Robert Gregory, dairy and livestock specialist; Reynolds Minnich, Elwood Earhart, Edgar Snavely, and Robert Woodward, all sales and service. Seated, left to right: Cleveland Hastings, poultry meat production specialist; Allen B. Graybill, vice president and treasurer; Robert B. Graybill, vice president and general manager; Ralph Holder, nutritionist; Dr. Thomas G. Culton, director of research and nutrition; Hendrik Wentink, sales manager. Not present for picture, Samuel Finkbiner, sales and service.

Remember . . . Early Bird Feeds and Good Management  
A Winning Combination For Any Poultryman

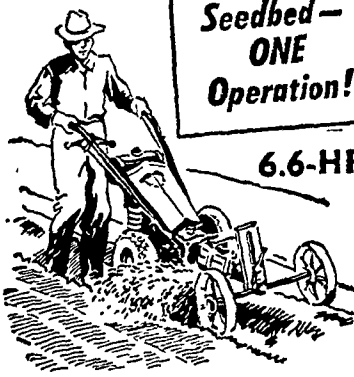
Contact your Miller & Bushong Service Representative or call us direct at Lancaster 392-2145 (Area code 717).



**Miller & Bushong, Inc.**  
ROHRERSTOWN, PA.  
"FINEST SERVICE ANYWHERE"

**GRAVELY**

Perfect Seedbed — ONE Operation!



6.6-HP

**Challenge! COMPARE—**

The Gravelly Tractor and its 21 attachments for performance . . . with any other tractor at any price! A FREE DEMONSTRATION will show you why the Gravelly is best by job test. Phone or drop in today!

BOOTH 701-702 AT THE FARM SHOW

**James S. Messner**  
BAREVILLE  
Phone Leola 656-6911

