

Four Countians In Tax Course

Four Lancaster Countians were among the recent graduates of a two-day course on farm income tax and social security at the Pennsylvania State University.

Completing the course were Kenneth A. Leid and Eugene Henly, both of Denver; Charles W. Miller, Goodville, and Harold H. Messner, 1043 Helen Ave., Lancaster.

Completing the short course designed primarily for persons who assist farmers in preparing income tax returns, were these persons from nearby areas Harry M. Gingrich, Jonestown R1, Luke H. Bachman, Lebanon R1, and Ray S. Trayer, Hershey.

Protect Lawn

If we have much snow this winter, we can expect snow mold in lawns or fine turf where the disease has been a problem, warns A. H. Bauer, Penn State extension plant pathologist. Damage from snow mold is reduced or prevented by not piling snow on the lawn and by treating areas with chemicals. Where snow mold has been a problem and much snow falls, see your county agent for further information on snow mold control.

Children need some food to grow on, some plans to go on, and some praise to glow on, suffered from indigestion all his life and died at the age of 87.

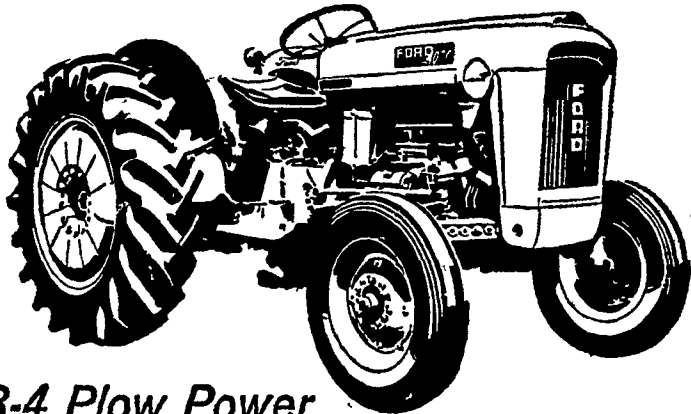
SHAVINGS HAROLD B. ZOOK

220 LAMPETER ROAD LANCASTER, PA.
PHONE 394-5412

- CLEAN DRY PINE
- SEMI DRY PINE
- MIXED

BAGS OR BULK — DELIVERIES OVER 2 TON AND TRAILER LOAD PRICES

*Tugs Like A Tiger...
"Scats" Like A Kitten!*



3-4 Plow Power

FORD 4000 TRACTORS

- Solid, compact and powerful without big-tractor costs.
- Famous Ford hydraulics and 3-point hitch. And with Select-O-Speed, you shift gears... engage PTO... on-the-go!
- A model to fit your needs—gasoline, LP-gas, diesel... choice of transmission, PTO, many other features.

ROW CROP MODELS, TOO—the same rugged power and economy, plus power steering as standard equipment!

Choose Yours Now—UP TO 4 CROP YEARS TO PAY!



Elizabethtown Farmers Supply, Inc.

Elizabethtown
Phone 367-1341

Grimm's Ford Tractor & Farm Service

Park Ave., Quarryville
Ph. 87-2507

Allen H. Matz
Denver
Phone 267-6502

Keener Equip. Co.

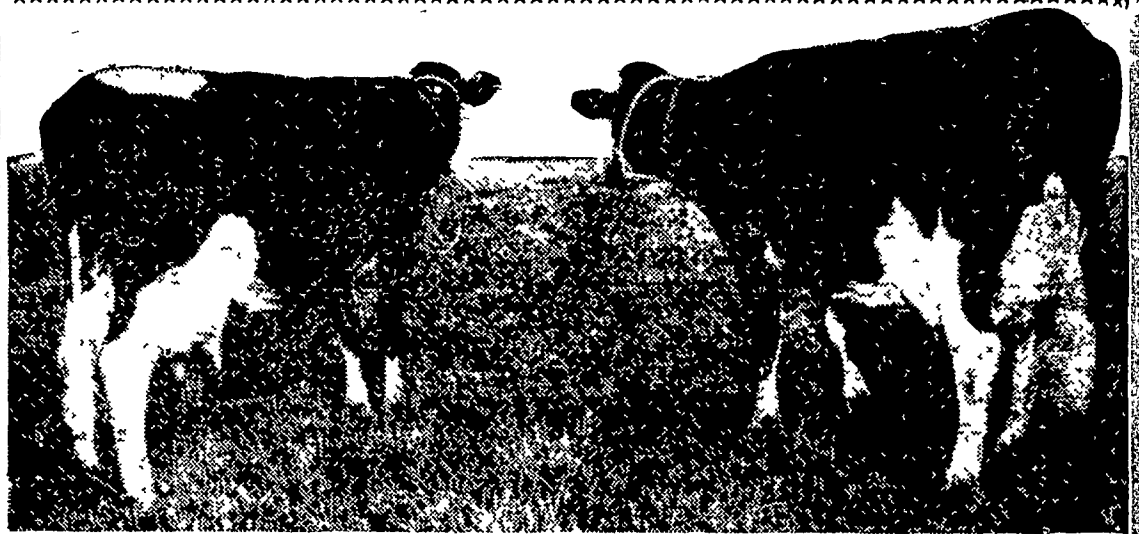
Rts. 230 & 72, Lancaster
Phone 569-9861

Sauder Bros.
New Holland
Phone 354-8721

CHECKERBOARD

service bulletin

Which is the better cow?



YOU BE THE JUDGE!

These two cows are from the Purina Dairy Center herd. They're about the same age. Each has calves regularly. Each has produced 15,000 lbs. of milk in her 10 months lactation.

THE COW ON THE LEFT should be the heavier producer, based on her bred-in ability. But she's too thin (because of the experiment she's been on). She's been producing at the expense of her own body.

Body condition is most important in keeping a herd milking at their peak year after year. Body condition depends on proper feeding during the dry period... and is maintained by feeding a good milking ration.

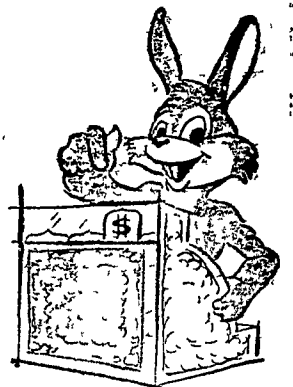
Ask us about Purina's Dairy Feeding Program... built by 34 years of research with thousands of cows. It's sure to help your cows give all the milk they're bred to give... to help you make top profits from your herd.

Rabbits Go Commercial

American housewives love variety in the meat counter at their supermarket and they'll pay for it, too!

The growing demand for delicious farm-raised, all-white rabbit meat creates a new commercial farm opportunity. Rabbit production, "The Purina Way" may be a sound, profitable (but not get-rich-quick) business, either part-time in the backyard or full-time on the farm.

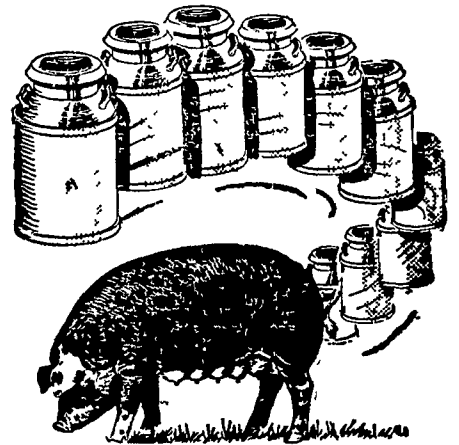
Talk with your Purina salesman about this opportunity. If you raise rabbits now... feed Purina Rabbit Chow, developed at the modern 84-doe rabbitry on the Purina Research Farm, Gray Summit, Missouri.



Do You Know... Sows Produce 100 Gallons Of Milk Each Year

A brood sow is a factory — a "pig factory" — and she needs help to produce to capacity. At the Purina Research Farm on the Purina Hog Program, sows each year produce more than 100 gallons of milk; wean 18 pigs; and maintain their own bodies. These are mighty big jobs.

Purina Sow Chow — fed with your grain — is designed and researched especially for these big jobs. Get Sow Chow at our store with the Checkerboard Sign.



John B. Kurtz
Cedar Lane

S. H. Hiestand & Co
Salunga

Whiteside & Weickel
Kirkwood

John J. Hess, II
Intercourse - New Providence

John B. Kurtz
Ephrata

Wenger's Feed Mill, Inc.
Ephrata

Ira B. Landis
Valley Road, Lancaster

James High
Gordonville

J. H. Reitz & Son, Inc.
Lititz

Warren Sickman
Pequea

John J. Hess
Kinzers - Vintage