

Large Volume Is Sold

Only one lot on offer failed to sell at the December 6 auction at the Lancaster Poultry Center. The 28 lots of broilers sold ranged from 15.5 to 16.4. At these prices, growers parted with 124,500 head.

Seven lots including 5,100 roasters also sold at prices of 24-26.6, and pullets brought 24 to 28 for the 4,950 head in five lots. Four lots of heavy fowl brought 17.5 to 17.7 for the 3,300 head. Two lots of 1,000 leghorn fowl sold for 8 and 9 cents a pound, and one lot of 250 males were nine.

A lot of 1,000 guineas at 4 1/2 months old brought 42.5 cents a pound.

The complete sale offered 148,100 head in 49 lots and sold 140,100 head in 48 lots.

Following is the complete sale report with lot number, seller, grower in parenthesis, amount and breed, age in weeks and days, buyer and price.

Code: H-F-Heavy Fowl, WV-White Vantress, LP-Ledbrest Pullets, G-Guineas, L-F-Leghorn Fowl, IR-Indian River, P-Pullets, C-Cockerels, X-

1. Longenecker's Hatchery, 550 H-F, Carl B. Risser, 17.7; 2. Andrew N. Miller, 2000 WV, 9-3, Carl B. Risser, 16.4; 3. Andrew G. Miller, 825 LP, 13-0; 4. Same, 825 LP, 13-2, W. C. Mellinger & Son, 28.0; 5. C. Mellinger & Son, 28.0; 6. Jonas Martin, Jr., 1000 G, 4 1/2 mo., Starr Poultry, 42.5.

7. Daniel G. Forry, 3500 WV, 9-3, Daniel K. Good, 15.6; 8. Same, 3500 WV, 9-3, Daniel K. Good, 15.7; 9. Same, 3500 WV, 9-3, Daniel K. Good, 15.6; 10. Charles Shertzer, 600 L-F, 16 mo., V. J. Koser Co. Inc., 9.0; 11. Miller & Bushong (Stanley Carpenter), 8000 WV, 8-6, H. W. Longacre, Inc., 15.8.

12. Same (John L. Herr), 600 WVC, 13-2, W. C. Mellinger & Son, 24.4; 13. Same, 600 WVC, 13-2, W. C. Mellinger & Son, 24.4; 14. Ivan Z. Hoover, 1300 WV, 10-1, Martin Brendle, 15.8; 15. Kenneth Noll, 1300 WVP, 14-0, W. C. Mellinger & Son, 27.8; 16. M&B (Dorothy Miller), 700 IRC, 12-1, W. C. Mellinger & Son, 27.8.

Demand Good; Prices Gain

Delmarva reported live prices on broilers continued to advance during the 24 hour period ending 10:30 Friday morning with a good demand for the moderate offerings. Ready to cook demand continued good with eastern shore processors estimating slaughter for the week-end at 817,000 head compared to the 823,100 head last week end.

Prices at farms during the period ranged 14.7 to 16.3 for 885,900 head including 555,000 head sold at Thursday's auction at Selbyville, Del. The Delmarva broiler-feed ratio for the week ending November 30 was down one point to 2.7. Broilers averaged 13.27 for the week and mash cost the grower \$96.88 per ton.

Agriculture will have to double production by the year 2,000 if our present diet of plant and animal products is to be maintained for the ever-increasing population.

Weekly New York Egg Mkt.

From Monday, Dec. 3rd to Friday, Dec. 7th

| | Mon. | Tues. | Wed. | Thurs. | Fri. |
|--------------|---------------|--------|---------------|---------------|-----------|
| WHITE | | | | | |
| Ex. | | | | | |
| Fcy. Hywts. | 39 | 39 | 39 | 39 | 39-39 1/2 |
| Fcy. Hywts. | 37 1/2 | 37 1/2 | 37 1/2 | 37 1/2 | 37 1/2-38 |
| Fcy. Med. | 32 | 33 1/2 | 33 1/2 | 33 1/2 | 34 1/2 |
| No. 1 Med. | 30 | 32 | 32 | 32 | 32-33 |
| Pullets | 27 | 28 | 28 | 28 | 30 |
| Peeweese | 22 | 23 | 23 | 23 | 24 |
| BROWN | | | | | |
| Ex. | | | | | |
| Fsy. Hywts. | 39 1/2 | 39 1/2 | 40 | 40 | 41 1/2 |
| Fcy. Hywts. | 38 1/2 | 38 1/2 | 39 | 39 | 40 1/2 |
| Fcy. Med. | 34 | 34 | 34 | 34 | 35 |
| Pullets | 28 | 29 | 29 | 29 | 30 |
| Peeweese | 22 | 23 | 23 | 23 | 24 |
| MIXED | | | | | |
| Fcy. Hywts. | 37 | 37 | 37 | 37 | 37 |
| No. 1 Med. | 30 | 31 | 32 | 32 | 32-33 |
| Pullets | 26 1/2 | 27 | 27 | 27 | 27-28 |
| Standards | 35 1/2 | 35 1/2 | 35 1/2 | 35 1/2 | 35 1/2 |
| Checks | 31 1/2-32 1/2 | 31 | 31 1/2-32 1/2 | 31 1/2-32 1/2 | 32-32 1/2 |

TREND: Market steady on all top grades and continue to clear very well on all small sizes.

Copyrighted 1962 By Urner-Barry Co.

ANNOUNCING 1963 Twine Program

ALL TWINES DOMESTIC

BALER TWINE

EXTRA LENGTH REGULAR ROTO 750

BINDER TWINE

Baler and Binder Twines may be combined for Quantity Cash Savings.

- Shipping Period I in Effect Now and Until December 30.
- Shipping Period II in Effect After January 1, 1963.

Advance in Price Quite Possible —

ORDER TODAY

John E. Melhorn
Mt. Joy

Maurice Good
Gordonville

Jacob L. Kurtz
Elizabethtown

G and G
Feed & Supply
Lititz - Manheim

Martin Wanner
Gap

John Martin
Bareville

Wilson Scott
West Willow

Stephen Kurtz
Morgantown

Evan E. Dinger
Reinholds

Enos R. Buckwalter
Bird-in-Hand

Henry B. Hoover
Ephrata

Farmers
Feed & Supply
New Holland



Lancaster Service Center
Quarryville Service Center

Eastern States Farmers Exchange, Inc.

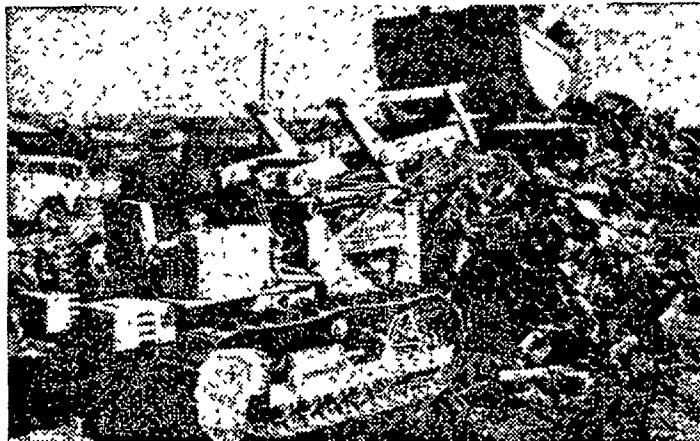
Bananas grow freely and wild in most of tropical Africa where the natives use them raw, stewed, baked, fried, and roasted, and also make an alcoholic drink from them.

Buyer of Oak, WALNUT, Poplar, ASH, etc.
C. J. CHARLES LUMBER
New Providence, Pa.
Phone ST 6-3108

● SCD Directors
(Continued from Page 1)
and appointed by the commissioners.

The district board will meet in the county court house next Monday night to hear the annual report and discuss plans for 1963. Applications for the Outstanding Conservation Farmer of the year will also be received at the meeting.

TOUGH PERFORMER... MONEY-MAKER



Solid construction is apparent in the tough track assembly, with full overlapping grousers of the Allis-Chalmers H-3 and HD-3 Tractors. Take a look at the drive sprockets; they're husky and tough. Get a close-up of the clean lines that make mounting of equipment easy and solid.

Watch this tough performer in action. See what SHUTTLE Clutch can mean. You use a single lever to change direction — forward or reverse — there's no foot clutching or gear shifting, and the tractor is always under complete control. Loading cycles are smooth, fast — real timesavers on the job.

Allis-Chalmers compact crawlers and wheel-type industrial tractors and equipment can be money-makers for you.

H-3 has 43-hp gasoline engine, HD-3, 40-hp diesel.

FINANCE FOR PROFIT — ask us about Allis-Chalmers time payment plans tailored to your equipment needs.

ALLIS-CHALMERS

SALES AND SERVICE

L. H. Brubaker
Lititz, Pa.

N. G. Myers & Son
Rheems, Pa.

Grumelli Farm Serv.
Quarryville, Pa.

Missley Farm Service
Washington Boro, Pa.

L. H. Brubaker
Lancaster, Pa.

Smavelly's Farm Service
New Holland, Pa.

Lausch Bros. Equipment
Stevens