

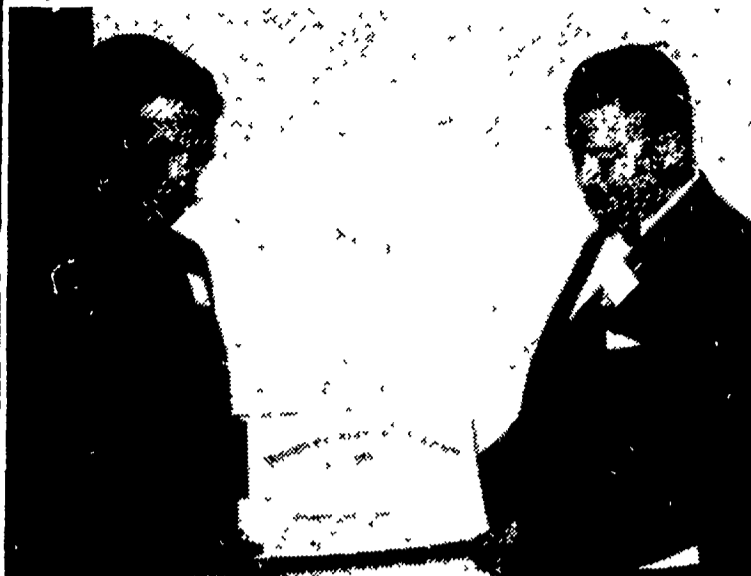


24-HOUR SERVICE!

We get there fast if you have burner trouble. We'll adjust your burner for economical operation — complete combustion.

GARBER OIL CO.

MOUNT JOY, PA.
Ph. 653-2021
105 Fairview St.



OXFORD CHAPTER YOUNG FARMERS Association was presented its charter in the state association YFA Wednesday at the state convention at the Pennsylvania State University. Here Lee Brown, left, president of the chapter and D. Kenneth Thompson, chapter advisor examine the new charter. The Chester County school has held young farmer classes for several years, but had never been granted a charter by the state association. L. F. Photo.

● **Young Farmers**

(continued from page 12)
ground with springs. Clear spans of 70 feet are common, and the manufacturer believes a 100 foot span is possible.

He described a fencing machine that drives posts, stretches wire and fastens it to the posts all in one operation and does it in one fifth the time it normally takes to make the same kind of fence.

McJunkin said his company believes that a building is obsolete when it is built if it is not an integral part of a materials-handling system. "Unless it is designed into the system, it is just another roof to put things under," he said.

said

We will continue to develop systems rather than individual pieces of equipment, he said.

McJunkin said his company has realized that Russia is rapidly catching up with the United States in steel production technology and many other technologies. Perhaps they are ahead of us in some space technologies, but the production of food is one technology in which America is still far out in front, he said.

PRIZE WINNING STEERS

Grand Champions and Reserve Champions chosen at the Lancaster County and Chester County 4-H Round-ups were fed well.

The ever-increasing volume of Wayne Sweet Mix each year indicates the cattlemen of Pennsylvania are aware of the fact that Wayne Sweet Mix is truly a quality product.

This natural protein feed along with good management is responsible for developing many Grand Champions. THE GRAND CHAMPION AND THE RESERVE CHAMPION CHOSEN AT THE RECENT CHESTER COUNTY 4-H ROUND-UP HAD BEEN FED WAYNE SWEET MIX. THE GRAND CHAMPION AND RESERVE CHAMPION CHOSEN THE FOLLOWING DAY AT THE SOUTHEASTERN 4-H ROUND-UP AT THE UNION STOCKYARDS IN LANCASTER HAD BEEN FED WAYNE SWEET MIX.

The proof of the feed, therefore, is in the eating.

Wayne Sweet Mix with natural protein may cost a little more, but if the difference is as much as \$10 per ton, the increase would amount to only \$1.00 per ton when mixed to make one ton of complete feed. On the basis of the Nov. 19th price of cattle, the \$1.00 per ton is offset if only approximately 3 1/2 lbs. additional weight per animal is secured. The additional weight beyond this represents valuable dividends. For instance, if Wayne Sweet Mix gives you 75 lbs. additional weight per animal you'll have an additional income of approximately \$21.50 per head.

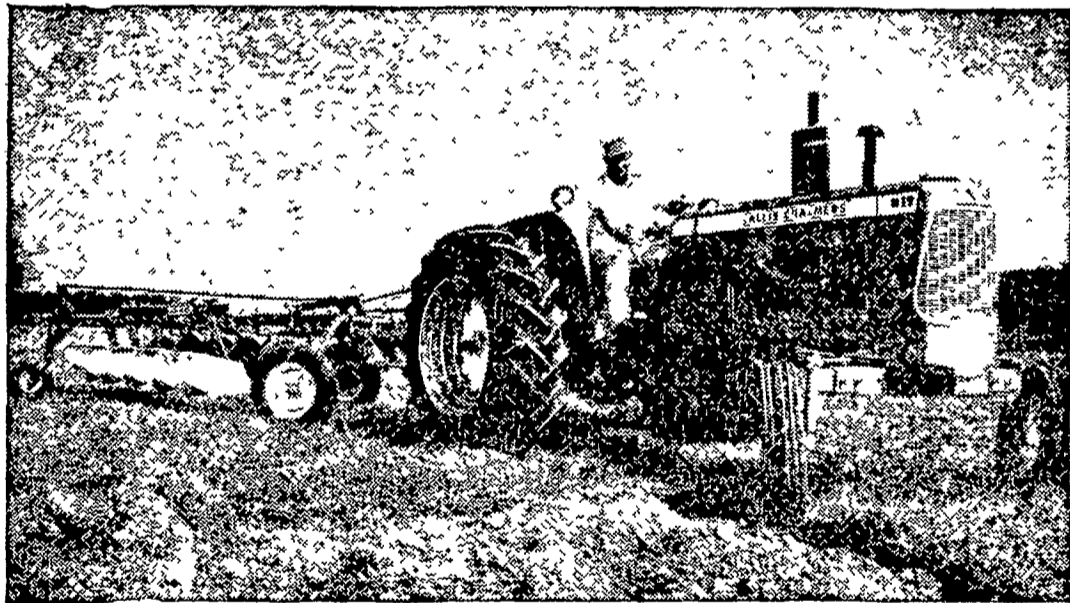
There is a Wayne dealer near you with a supply of fresh Wayne Sweet Mix. Your business will be appreciated.

- | | |
|---|--|
| Gurney D. Brandt Sons
Lebanon, Pa. | Markey's Wayne Feed Store
Lebanon, Pa. |
| Irwin K. Curry
Hershey, Pa. | Ellis W. Mentzer
New Holland, Pa. |
| John K. Curry & Sons
Palmyra, Pa. | H. H. Miller
Pantonia, Pa. |
| Dutchman Feed Mills, Inc.
Stevens R. D. 1, Pa. | Millersville Supply Co.
Millersville, Pa. |
| Grubb Supply Co.
Elizabethtown, Pa. | Mountville Feed Service
Columbia R. D. 2, Pa. |
| Heck's Mill
Leesport, Pa. | Powl's Feed Service
Chestnut Level, Pa. |
| John M. Herr
Grantville & Jonestown, Pa. | Rohrer's Mill
Ronks, Pa. |
| Hershey Bros.
Reinholds, Pa. | Chas. E. Sauder & Sons
East Earl, Pa. |
| Horst's Mill
Lebanon R. D. 1, Pa. | H. M. Stauffer & Sons, Inc.
Witmer - Ronks - Leola, Pa. |
| Lime Valley Mills
Willow Street, Pa. | J. K. Stauffer & Son
Lawn and Bellaire, Pa. |
| Marion Roller Mill
Stouchsburg, Pa. | J. C. Walker & Son, Inc.
Gap, Pa. |

WE INVITE YOU...

to **STOP IN** and **SEE**
the **BIG NEW**

D-19



See how you can increase your work capacity with . . . Big Horsepower . . . Big Weight . . . Big Size. Available with 6-cylinder POWER-CRATER gasoline or LP gas engines or turbo-charged diesel. Investing in bigger earning power is sound farm management.

POWER CRATER is an Allis-Chalmers trademark.

Finance for profit. Ask us about Allis-Chalmers' time payment plans.

ALLIS-CHALMERS
SALES AND SERVICE



- | | | |
|---|--|--|
| L. H. Brubaker
Lititz, Pa. | N. G. Myers & Son
Rheems, Pa. | L. H. Brubaker
Lancaster, Pa. |
| Grumelli Farm Serv.
Quarryville, Pa. | Nissley Farm Service
Washington Boro, Pa. | Snavely's Farm Service
New Holland, Pa. |
| Lausch Bros. Equipment
Stevens | | |