

Growers Resisting Drop

Broiler growers responded to falling prices by selling only eight lots and 49,000 head on the November 15 auction at the Lancaster Poultry Center. Prices ranged from 12.1 to 13.4 for a sale average of 13.14.

The price last week averaged 14.56 which was down from the 17.23 at the November 1 sale. Last week growers withdrew 12 lots containing 41,000 birds. At Thursday's sale a total of 34,250 head in six lots were "no sale" at bids of 11.9 to 13.3.

The only other birds on offer were 7,000 leghorn fowl in one lot; these crossed the block at 9.9.

The complete sale offered 90,250 head in 15 lots and sold 56,000 head in nine lots.

Following is the complete sale report with lot number, seller, grower in parenthesis, amount and breed, age in weeks and days, buyer and price.

CODE: WV-White Vantress, L-F-Leghorn Fowl, X-Cross, LC-Ledbreast Cobbs, WMT-White Mountain, MC-Moore's Chesty Cross.

1. Miller & Bushong (C. Kendig Rohrer), 7500 WVX, 8-6, NO SALE, 13.3 BID; 2. Same, 7500 WVX, 8-6, NO SALE, 13.2 BID; 3. Raymond

S. Musselman, 7000 L-F, Starr Poultry; 4. D. E. Horn & Co. (Harold Z. Musser), 7500 LCX, 9-6, Daniel K. Good, 13.4; 5. Same (Phillip Foster), 2500 WV, 10-2, John N. Thomas, 13.4.

6. Same (Lee Reinecker), 6000 WV, 10-2, College Hill Poultry, 12.1; 7. Same (James Weller), 9000 WV, 9-6, College Hill Poultry, 13.3; 8. Same (Martin S Landis), 4500 WV, 9-5, Carl B. Risser, 13.4; 9. M&B (Daniel Ebersole), 8500 WV, 9-2, NO SALE, 13.3 BID; 10. Same (Benjamin Brubaker), 750 WMT, 10-0, NO SALE, 11.9 BID.

11. Fruitville Farms Inc. (Chester Murry), 6000 MCX, 8-6, V. F. Weaver Inc., 13.3; 12. Same, 7000 MCX, 8-6, Starr Poultry, 13.3; 13. Same, 5000 MCX, 8-6, NO SALE, 13.3 BID, 14. Same, 5000 MCX, 8-6, NO SALE, 13.3 BID; 15. Philip Foster, 6500 WV, 10-2, College Hill Poultry, 13.0.

Dairying is the largest single source of farm income in the United States, involving about one-fifth of our agricultural economy.

Prices Are About Steady

Delmarva reported prices increased approximately a half cent during the 24 hour period ending 10:30 Friday morning with a fair demand for the light offerings. Prices of 1.2 to 1.4 for 748,900 head at farms were reported during the period. This includes sale of 395,100 head of 406,100 head offered at the Eastern Shore Poultry Producers Exchange Thursday.

Ready to cook demand was spotty ranging from slow to fair in interest with very few plants operating today. Estimated slaughter for the week end by Eastern Shore processors was 587,000 head compared with the 557,000 head last week end.

Competition from other broiler producing areas was heavy and buying interest centered on other holiday items.

The Delmarva broiler-feed ratio for the week ending Nov. 9 was down two points from the previous week at 3.3. Broilers averaged 15.59 during the week and 20% mash cost the grower \$95.37 per ton. The ratio for the comparable week last year was 2.8 when broilers averaged 12.51 and mash cost \$89.14 per ton.

Georgia reported broiler-fryer prices relatively un-

Weekly New York Egg Mkt.

From Monday, November 12th to Friday, November 16th

	Mon.	Tues.	Wed.	Thurs.	Fri.
WHITE					
Ex. Fcy. Hywts.		47	48	48	48
Fcy. Hywts.		44	45	45	44
Fcy. Med.		38	37 1/2-37 3/4	37 1/2-37 3/4	34
No. 1 Med.		34 1/2	34 1/2	33 1/2	33
Pullets		29	29	29	27
Peewees		23	23	23	22
BROWN					
Ex. Fcy. Hywts.		48	49	49	48
Fcy. Hywts.		46 1/2	46 1/2-47 1/2	47 1/2	47
Fcy. Med.		38	38	38	37
Pullets		29	29	29	28
Peewees		23	23	23	22
MIXED					
Fcy. Hywts.		43 1/2	44 1/2	44 1/2	43
No. 1 Med.		32-33	32-33	33	32
Pullets		27	27	27	26
Standards		37 1/2	36 1/2	36 1/2	34 1/2
Checks		31-32	31-32	31-32	31

TREND: Market still cleared closely in most quarters on fine whites. Other grades generally easier and market unsettled.

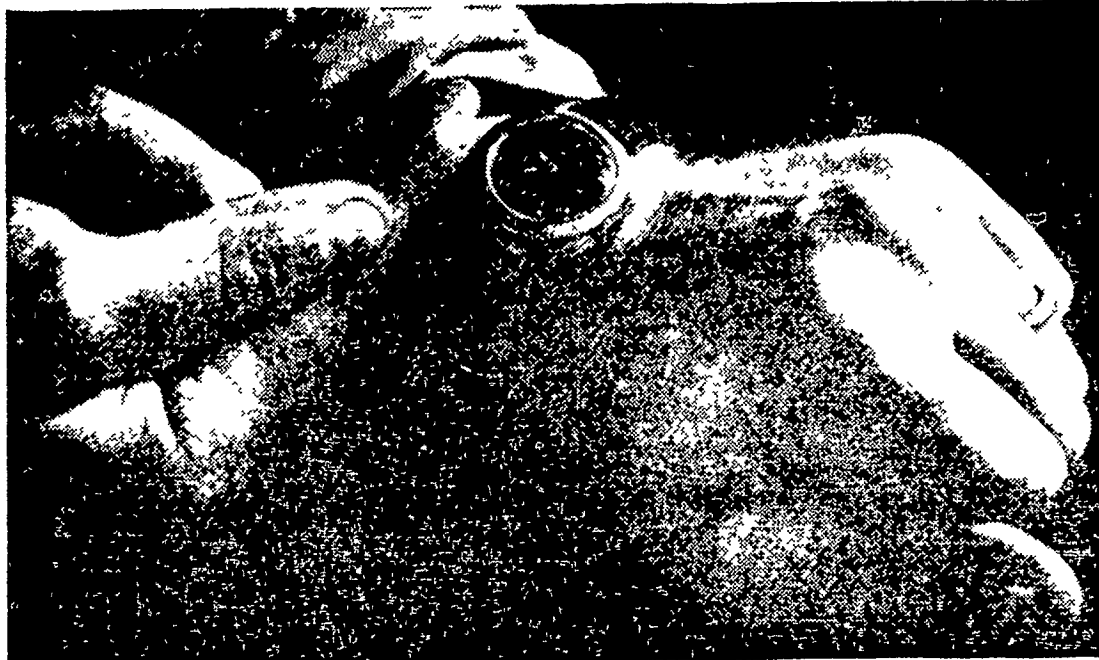
Copyrighted 1962 By Urner-Barry Co.

changed during the 24 hour period ending 10:30 Friday morning. Prices were quoted at mostly 13 cents at farms with an occasional quote of 12 and 13.5 as quality varied. Offerings in Georgia were sometimes burdensome as weights heavier than desired filled supply channels.

Estimated slaughter by Georgia processors for the week end was 1,322,000 head compared to the 1,559,000 head last week end.

Leftover Chicken

When there's leftover cooked chicken and gravy, refrigerate or freeze as soon as possible, advises Louise Hamilton Penn State extension nutrition specialist. Use covered containers for storing. Remove stuffing from roasted whole chicken, put stuffing and meat in separate containers and refrigerate. Use refrigerated leftover chicken and stuffing within two or three days.



The time you spent talking corn with Your Hoffman Seed Man may be YOUR HIGHEST-PROFIT HALF HOUR



OF THE YEAR...

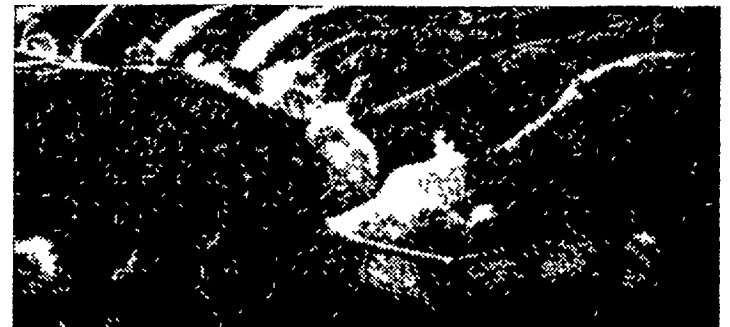
This is because the High-Capacity Funk's G-Hybrids he offers you can mean higher farm income from every acre of your corn land

In 1963, plant the hybrids with MORE CAPACITY TO PRODUCE!

See your Hoffman Seed Man or phone Landisville 898-3421

A. H. Hoffman Seeds, Inc.
LANDISVILLE, PA.

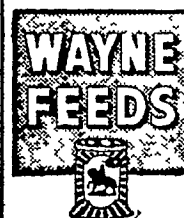
FATTEN CATTLE ECONOMICALLY



with WAYNE BEEF BALANCER

This economical blend of protein ingredients, including urea, helps fatten cattle on good quality roughage—economically and efficiently.

Wayne Beef Balancer's high protein content also does a good job of balancing farm grains.



STILBESTROL
We have Wayne Beef Balancer with or without stilbestrol.

MILLERSVILLE SUPPLY CO. MOUNTVILLE FEED SERVICE
Millersville R. D. 2, Columbia

- | | |
|---|--|
| J. K. STAUFFER & SON
Lawn & Bellaire | POWL'S FEED SERVICE
R. D. 1, Quarryville
R. D. 2, Peach Bottom |
| LIME VALLEY MILLS
R. D. 1, Willow Street | GRUBB SUPPLY CO.
Elizabethtown |
| DUTCHMAN FEED MILLS, INC.
R. D. 1, Stevens | C. E. SAUDER & SONS
R. D. 1, East Earl |
| ROHRER'S MILL
R. D. 1, Ronks | H. M. STAUFFER & SONS, Inc.
Witmer - Ronks - Leola |
| HERSHEY BROS.
Reinholds | |