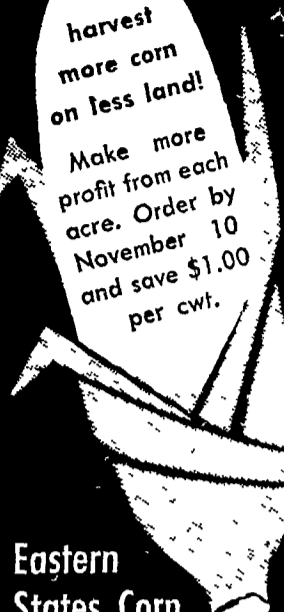


You harvest more corn on less land!  
 Make more profit from each acre. Order by November 10 and save \$1.00 per cwt.



**Eastern States Corn is proud to stand up and perform!**

**Eastern States**  
 FARMERS' EXCHANGE

**LANCASTER SERVICE CENTER**  
**QUARRYVILLE SERVICE CENTER**

### State Grange To Hear Both Candidates

Pennsylvania's two gubernatorial candidates will address the more than 2,000 delegates and guests at the 90th annual session of Pennsylvania State Grange in Reading the week of October 22nd, it has been announced by State Grange Master J. Collins McSparran.

Congressman William W. Scianton, Republican nominee for Governor will speak at 9:00 p.m. Monday, October 22nd at the public opening session of the Grange. Mayor Richardson Dilworth, the Democratic nominee for Governor, will address the delegates at an open meeting at 9:00 p.m. on Tuesday, October 23rd. Both meetings will be held in the Rajah Theatre.

McSparran said that the representatives of the 73,500 rural Pennsylvanians who form the Grange are looking forward to hearing the two gubernatorial candidates in person. Their appearance will be before the Grange delegates, who as representatives of the members of the State's largest farm organization, will take action on a number of resolutions that have been submitted by local Granges

### EGGtober Is Designated By Poultrymen

HARRISBURG — The Pennsylvania egg industry has changed the name of October to EGGTOBER as a salute to the consumers of the state for the entire month. The state observance is tied in with the national celebration of EGGTOBER, which has as its theme "Eggs for People on the Go."

The theme, "Eggs for People on the Go," refers to the energy supplied by eggs for people in the swing of fall activities — at school, at work, and at play. One of nature's most nearly-perfect foods, eggs are power-packed with protein, plus vitamins and minerals essential to nutritional health. Two eggs eaten every day supply as much as one-third of the protein needed by adults, says Paul Konhaus, Mechanicsburg, chairman of the promotion campaign.

Throughout the State then actions will decide the legislative policies that the organization will pursue in 1963.

McSparran also said that the delegate's individual reactions to the candidates will be carried to every corner of Pennsylvania between the close of the session and Election Day.

### Co. Poultrymen Plan Banquet

Paul F. Osborne will take us on a three month "Trip Around the World" with comments on points of interest on his fabulous color movie.

These words announced the annual Lancaster County Poultry Association Banquet which has been scheduled for October 25 in Hostetter's Banquet Hall, Mount Joy.

The Garden Spotters, a county barbershop quartette will furnish music for the program.

Tickets for the banquet are available from any of the committee, Joe Wolgemuth, Mount Joy, Carl Harnish, Millersville, or Lester Huist, Ephrata, or from the Poultry Center.

#### Proper Fit

Gramline is one guide for checking fit of ready-to-wear or sew-you-own garments, says Bernice Tharp, Penn State extension clothing specialist. Gramlines are the straight lines in the fabric formed by the weaver. In a garment, these lines usually run perpendicular

### 3 Technicians Win Awards In SPABC Work

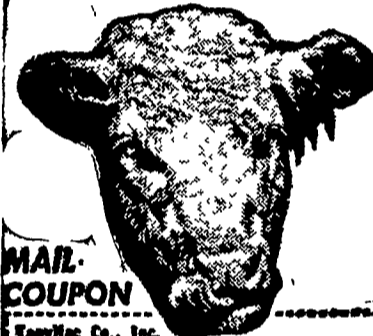
Three Technicians for the Southeastern Penna. Artificial Breeding Cooperative recently received the highest honors available from the National Association of Artificial Breeders.

Technicians Robert J. McDowell, William I. Swan, and Clyde A. Dubble were awarded membership in the N.A.A.B. 35,000 Cow Club. This represents at least 35,000 first services in the careers of each man with SPABC.

The awards consisted of attractive lapel pins and certificates, and were presented at a recent banquet for employees and their mates. Both McDowell and Dubble work from the Lancaster Office and Swan works from the Coatesville Branch Office.

lar or horizontal to the floor. A careful check of gramlines usually reveals the cause of unwanted diagonal wrinkles or pull. A well-fitted garment adapts itself to a woman's body and emphasizes her good features.

### UNLOCK EXTRA FEEDING VALUES IN YOUR GRAIN & ROUGHAGES and turn them into profits with SPECIAL TANVILAC



#### WHY INCREASE FEED COSTS?

Why feed 2 lbs. of high protein supplement when 1/2 lb. of Special Tanvilac per head, daily, with grain and roughage will help give you bigger profits at less cost?

**TANVILAC'S AN ECONOMICAL CATTLE AND SHEEP FEEDING PROGRAM THAT WILL MAKE MONEY FOR YOU.**

No guesswork when you feed SPECIAL TANVILAC with home grown grains and roughage. Get fast, cheap gains and high dress-out percentages! You can't win with Special Tanvilac — and at a cost below ordinary feeding methods.

#### MAIL COUPON

Tanvilac Co., Inc.  
 Box 94, Highland Park, Mo. 64686, Mo.  
 I would like to try Special Tanvilac for cattle and sheep.

NAME \_\_\_\_\_  
 ADDRESS \_\_\_\_\_  
 CITY \_\_\_\_\_ STATE \_\_\_\_\_

**The TANVILAC CO. Inc.**

**C. O. NOLT**

LOCAL DISTRIBUTOR

BIRD-IN-HAND

Phone Lanc. EX 7-0751



**NEW HOPE Complete Horse Feed.**

"Oats — ugh — I couldn't bear the sight of them — or hay either. Sometimes I could hardly catch my breath, and the least little trot made me cough 'til I thought I'd die."

"I had the heaves and I was miserable."

"Then my owner discovered New Hope Complete Horse Feed—no oats, nothing of any kind to stir up my allergies. My, how good it felt to really eat again, to be free from that terrible, hacking cough."

"If you're a victim of the heaves too, send your master as fast as he can go to get some Wayne New Hope Complete Horse Feed. Of course he has some other excellent horse feeds for horses that can still eat hay, but as for me, I'm sticking with Wayne New Hope Complete Horse Feed."

\* Actual unretouched photos of a horse before and after being fed New Hope Complete Horse Feed.



#### Chicago

(Continued from Page 2)  
 high Choice with few Prime 1098 lbs 30 00, Good large 25 00-28 50, Standard 23 00-25 00, load mixed Standard and Good Holsteins 25 25

Slaughter Heifers. Loadlots high Choice and Mixed Choice and Prime 900-1100 lbs 27-75-28 50, Part load high Choice to mostly Prime 1150 lbs 29 00

Cows Utility and Commercial cows closed at 14 25-16 50, Canner and Cutter 12 00-14-75.

Bulls Utility and Commercial bulls late 16 50-19 00, few head early in week up to 20 00, Cutter late 15 50-16 50

Vealers Standard and Good mostly 20 00-25 00, few Good during week to 27.00.

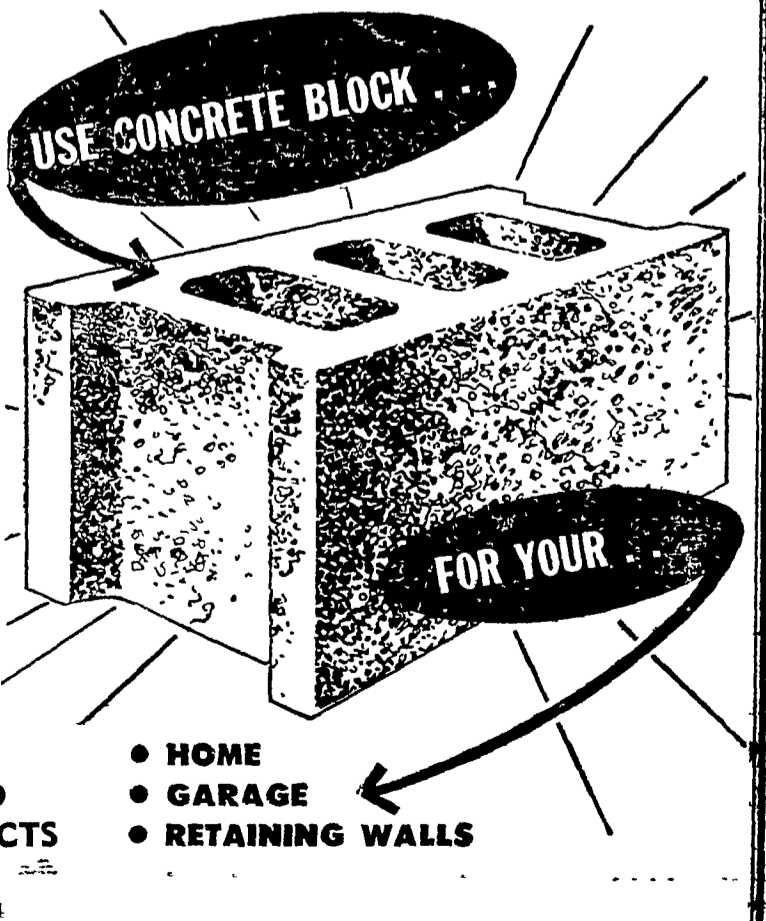
Feeders Load Choice 675 lb steers 27.00, load Mixed Medium and Good 700 lbs 23 50, load Medium 950 lbs 23 00.

## NEW HOLLAND Concrete Blocks

for Safer Durable Construction

**NEW HOLLAND CONCRETE PRODUCTS**

New Holland, Pa.  
 Phone: ELgin 4-2114



**USE CONCRETE BLOCK FOR YOUR**

- HOME
- GARAGE
- RETAINING WALLS

**MILLERSVILLE SUPPLY CO.**  
 Millersville

**J. K. STAUFFER & SON**  
 Lawn & Bellaire

**LIME VALLEY MILLS**  
 R. D. 1, Willow Street

**DUTCHMAN FEED MILLS, INC.**  
 R. D. 1, Stevens

**H. M. STAUFFER & SONS, Inc.**  
 Witmer - Ronks - Leola

**MOUNTVILLE FEED SERVICE**  
 R. D. 2, Columbia

**HERSHEY BROS.**  
 Reinholds

**POWL'S FEED SERVICE**  
 R. D. 1, Quarryville  
 R. D. 2, Peach Bottom

**GRUBB SUPPLY CO.**  
 Elizabethtown

**C. E. SAUDER & SONS**  
 R. D. 1, East Earl

**ROHRER'S MILL**  
 R. D. 1, Ronks