

• New Approach

(Continued from Page 12)

In other business, the directors signed four new agreements for conservation plans. Free soil conservation plans will be drawn for Kennard R. Wissins Nottingham R1, 85 acres in Little Britain Twp. Y. Merrill Carter, Quarryville R3, 94 acres in Eden Twp. Larry Dull, Manheim R3, 102 acres in Penn Twp. and Samuel L. Metzler, Holtwood R1, 86 acres in Maitt Twp.

Depreciation Guides

According to J. T. Hall, Penn State extension farm management specialist, the Internal Revenue Service has just published a new set of guidelines for calculating depreciation on farm buildings and equipment. A copy of the bulletin, **Depreciation Guidelines and Rules**, Internal Revenue Service, Publication No. 456 can be obtained for 25 cents from the Supt. of Documents, U S Government Printing Office, Washington 25, D. C.

Producers Co-op Pays Dividend

Producers Cooperative Exchange at Coatesville has announced a dividend on five per cent on preferred stock. K. M. Sauder, manager of the egg marketing cooperative said this week.

A total of \$2,500 will be paid to the 130 members who were preferred stockholders of record as of October 1.

The cooperative has not failed to pay a dividend on preferred stock any year since the cooperative was founded in 1939, Sauder said.

AUCTION
Valuable Real Estate
229 Acre Dairyman's Farm
Friday, November 2, 1962

1:30 P.M.
For **SAM K. KAUFFMAN**
R. D. #2 (Greble)
LEBANON, PA.

(Rte. 422 to Myerstown, North on Rte. 645 .02 mile, then LOOK for AUCTION Signs)

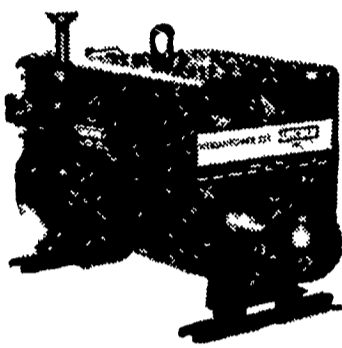
REAL ESTATE consists of a 229 Acre Dairy Farm, with Approx. 5000 ft. fronting the Swatara Creek, Approx. 9800 ft. fronting twp. and imp. roads, also 2500 ft. of Spring Run flowing through part of the pasture. 2 1/2 Story Brick Colonial Dwelling, 10 Spacious rooms, bath, enclosed porch, water supplied by never failing Spring and 2 wells. EXTRA LARGE barn with NEW DAIRY BARN attached with 38 Comfort stalls, steel box stalls, masonry milk house, 2 - 12x43 silos, 2 large implement sheds, corn barn, poultry houses (housing 1000 layers,) 3 car garage, large butcher house and repair shop Combination. 220 Volt A.C. current in buildings. All buildings in good repair and paint, over 200 acres tillable, in high state of fertility, has a nice stand of Alfalfa, good pasture with never failing stream and shade. Orchard with 40 fruit trees, a real DAIRYMAN'S FARM. Plan now to INSPECT THIS FARM on Thursday, October 25, 12 Noon to 4 P.M. and by Appointment.

Terms - 10% down day of Sale. Settlement on or before April 1, 1963.

Request Brochure. **Brokers Protected.**
CLERK - Henry J. Steiner, Atty.
Sanford A. Alderfer, Auctioneer
Harleysville, Pa. Area Code 215 256-3436

WELD, CUT, HEAT, BRAZE, SOLDER,
HARDSURFACE, POWER LIGHTS, TOOLS,
MACHINERY and HOME APPLIANCES
with one machine!

New Lincoln Weldanpower 225



ONLY
\$680

complete with
welding accessories

Dressel Welding Supply, Inc.

2000 Columbia Ave. (Lincoln Hwy. West)
PHONE: EX 7-1312 LANCASTER, PA.

Now Available
DIELDRIN

In
5 - 30 and
55 Gallon Drums

P. L. ROHRER & BRO., INC.

SMOKETOWN, PA.
Ph. Lanc. EX 7-3539



All new... and all set to go, ready to turn out more work in a day and to make it easier for you.

First of all, there's more horsepower in this new 770, coming from a deeper-breathing, higher-speed engine. Add the new Power-Booster Drive and you get 12 forward speeds, almost one-third more pull for heavy going at the touch of a lever—on the go.

Hook a new 4-bottom semi-mounted No. 5440 plow to Oliver's new Power-Traction Hitch and forget about the tough spots. Your 770 just bears down, steps right through at full speed. Put on Powerjuster wheels; let the engine change tread. And make driving a pleasure with power steering.

This is only the beginning. There's a lot more to see in the new 770. You'll want to feel this snappy power, too—in all the exciting new ways.

N. G. Hershey & Son
Manheim, R. D. 1

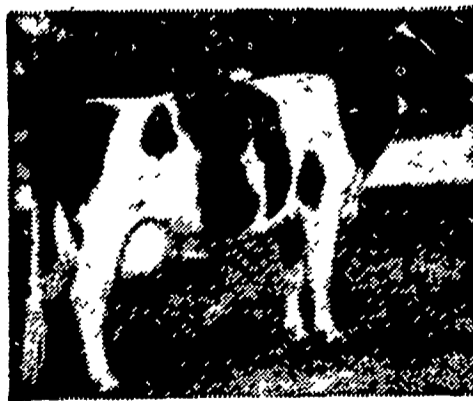
Farmersville
Equipment Co.
Ephrata, R. D. 2

Chas. J. McComsey
& Sons
Hickory Hill, Pa.

COWS PROPERLY CONDITIONED
...during the dry period PRODUCE
UP TO 25% MORE MILK!



BEFORE CALVING This cow was fitted on the Pioneer program for 60 days before calving. Note the excellent "dry cow" body condition.



AFTER COMPLETING RECORD The same cow after having produced 23,044 lbs. of milk and 941 lbs. of fat as a 4 year old. Note the extreme dairyness and exceptional body condition shown after this cow produced 11 1/2 tons of milk.

600 pounds of PIONEER DRY and FRESHENING yields an extra TON OF MILK!

Proper feeding of the dry cow is the most important single factor affecting herd health, longevity, and a sustained high level of milk production. In 60 days, while the cow is dry, Pioneer Dry and Freshening feed will repair the body from the previous lactation, build a reserve of body condition for the next lactation, and develop a stronger calf. In addition your cows will have less calving difficulties, eliminate placenta quickly, have less udder congestion, and most importantly they will produce up to 25% more milk!

See us today for full particulars.

Joseph M. Good & Sons
LEOLA — QUARRYVILLE

