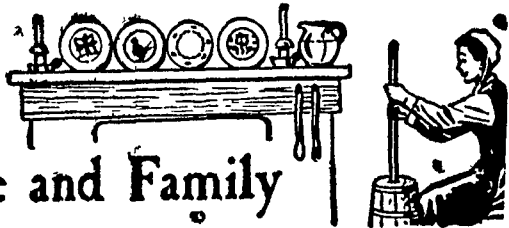


For the Farm Wife and Family



Sandwiches For Summer

By Mrs. Richard C. Spence

DAGWOOD SANDWICH — What could be better than a sandwich filled with one's favorite fixin's. The meat in the sandwich can be any or all of the protein rich cold cuts — mildly spiced bologna, pickle pimiento loaf, spicy and garlic seasoned salami and flavorful braunschweiger. Crisp, lettuce, sliced cheese and red ripe tomatoes will suit everyone's fancy. Individual favorites of catsup, mustard, mayonnaise or horseradish will top things off.

For that little something extra the sandwich makers will be delighted to find tucked in among the other fixin's a bowl of Zippy Sour Cream Sandwich spread. This dressing is a favorite of everyone and will disappear quickly. But there won't be any over-ime in the kitchen for mother because it is so simple to make.

ZIPPY SOUR CREAM SANDWICH SPREAD

1/2 cup dairy soured cream
1/2 to 1 teaspoon horseradish
1/2 teaspoon Worcestershire sauce
1/2 teaspoon dry mustard
1/2 cup finely chopped celery
Blend together all ingredients. Spread on bread for sandwiches. Makes 2 cups.

Broiled Cheese Salad Sandwiches add another page to the cheese sandwich chronicle. In these sandwiches, Cheddar is shredded topping the bread slice. But first it's mixed with nippy onion and cucumber bits, tangy dairy sour cream and bitey chili powder.

we haven't mentioned the thick, ripe tomato slice that lies atop the bread just under the Cheddar mixture or the two slices of dill pickle which cap it. Salty potato chips, a glass of cold milk and ripe fruit are tasty meal-mates to serve with these open-faced broiling cheese sandwiches.

BROILED CHEESE SALAD SANDWICHES

1 cup shredded Cheddar cheese
1/2 cup dried cucumber
1 tablespoon minced onion
1/4 cup dairy sour cream
1/8 teaspoon pepper
1/8 teaspoon chili powder
4 slices bread, buttered
4 large, thick tomato slices
8 dill pickle slices
Paprika

Mix together, cheese, cucumber, onion, sour cream and seasonings. Toast bread lightly under broiler. Arrange a tomato slice and 2 pickle slices of each slice of toasted bread, top with cheese mixture. Sprinkle with paprika. Place under broiler until cheese is melted and lightly browned. Makes 4 sandwiches.

CHEESEBURGERS

1 teaspoon salt
1 pound ground beef
6 slices cheddar cheese
1 10-1/2-ounce can cream of tomato soup

Add salt to beef; shape into six patties. Arrange in a 8" x 12-1/2" baking dish. Place slice of cheese on top of each meat patty. Pour tomato soup over the patties. Bake 30 minutes in a 350 degree oven.

DEUTSCH CHEESEBURGER

Deutsch Cheeseburger makes a dandy summer meal-in-a-minute. Butter 1 thick slice pumpernickel; fork on a generous portion of canned sauerkraut, top with a slice of salami, Swiss cheese, salami, and Cheddar cheese. Heat under broiler to slightly melt the cheese. Garnish with a slice of apple and green pepper skewered on a pick to make a relish kabob. Serve with well chilled milk.

COOK-OUT BURGERS

Ways with ground beef are many—Cook-out burgers add

another savory page. Instant nonfat dry milk makes the difference in this recipe. Added to ground beef instant nonfat dry milk results in burgers that are juicier and more flavorful. Nonfat dry milk absorbs the meat juices so that burgers don't shrink to a smaller size. Nonfat dry milk also acts as a nourishing stretcher. Recipes for hamburgers often include dry cereal, bread or cracker crumbs to give body to the patties. These provide only a slight amount of protein. This recipe uses 1 cup instant nonfat dry milk which contains the protein of 3 cups milk.

COOK-OUT BURGERS

1-1/2 pounds ground beef
1 cup instant nonfat dry milk
1 teaspoon salt
1 egg
1 tablespoon instant minced

onion
6 sandwich buns buttered
Mix together beef, instant dry milk, salt, egg and onion. Shape into 6 large, flat patties and place in wire hamburger broiler. Cook slowly over coals, turning occasionally, until cooked to desired doneness. Serve on warm buns.

Variations:
KABOBS: Shape meat into 18 balls. Alternate 3 balls on a skewer with tomato wedges, green pepper, mushroom caps, onions, etc. Place in broiler and cook as directed above; or, wrap in heavy-duty aluminum foil and cook over hot coals.

STACKED BURGERS: Shape meat into 4 large, 4 medium and 4 small flat patties; place in broiler and cook as directed above. To stack, top large patty with slice of

(Continued on Page 15)

PENN SQUARE MUTUAL FUND

Investing in Diversified Securities for INCOME and CAPITAL GAINS Possibilities

**NO BUYING CHARGE
NO SELLING CHARGE**

Subscriptions Accepted With No Minimum Share Requirements — Free of Pa. Personal Property Tax in opinion of Legal Counsel

NON-ASSESSABLE

J. L. HAIN & CO.

451 Penn Square, Reading Pa.

FR 5-4424

Please send me free information about Penn Square Mutual Fund

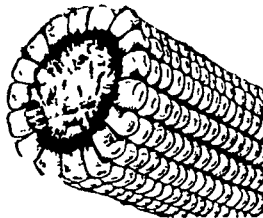
Name _____

Address _____

City and State _____

More farmers each month prefer to buy their

- HAY ● STRAW
- EAR CORN



from us for better value and all around satisfaction. At farm or delivered, any quantity as your requirements may be

PHONE STRASBURG OV 7-3211

Esbenshade Turkey Farm
PARADISE, PA.

SUPER SHOES

Self Service
220 W. King St.
Lanc. Co.'s Largest Shoe Store
All 1st Quality
Super Low Prices

THE IDEAL SYSTEM FARM and RANCH Do-It-Yourself

BOOKKEEPING AND TAX RECORD BOOKS

no experience needed
Prices \$3.50, \$4.95, \$6.95, \$9.95
Also Budget Books, Appointment & Daily Records, \$1.00, \$1.75, \$2.95

ABBEY STATIONERS

351 E. Main St.
EPHRATA, PENN.
TE 3-7070 RE 3-1224

It pays to use **NATURAL N. J. POTASH and CALPHOS**

Have them spread on your hay and grain fields now.

Contact us for details as these two materials will work well with your present farm program.

Brooklawn Farm

118 Kreider Ave.
Lancaster Ph. LO 9-1580
or see your local dealer

Hoffman SEEDS

ALFALFA • OATS
CLOVER • LADINO
FORAGE CROPS
PASTURE GRASSES
and >>>>>>>>

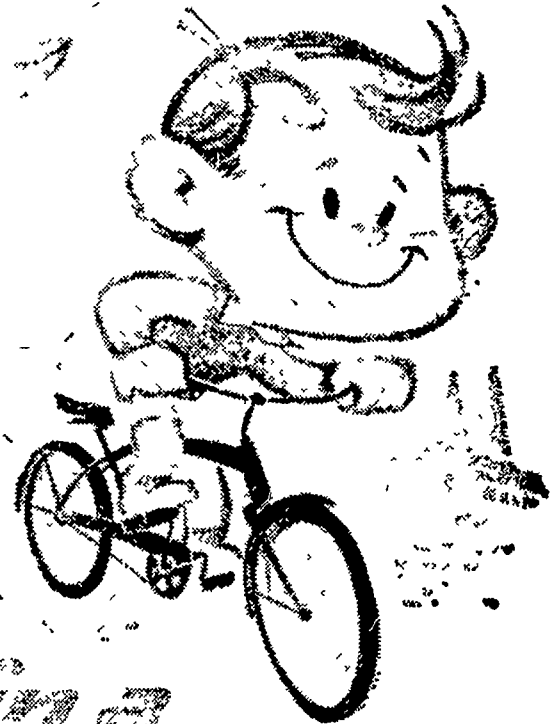
FUNK'S G HYBRID

Ready for fall ALFALFA Seeding:

- CERT. DUPUIS
- CERT. VERNAL
- 10-19 BRAND
- CERT. RANGER
- 9-19 BRAND
- BALBO RYE available now for quick, emergency pasture crop.

See your Hoffman Seed Man or call Landisville TW 8-3421

A. H. HOFFMAN SEEDS, INC.
LANDISVILLE, PA. PHONE TW 8-3421



HURRY FOR CASH
... get a Thrif T. Fulton
INSTALLMENT LOAN

at any friendly
FULTON National BANK
OF LANCASTER
PENN SQUARE ● McGOVERN AVENUE
EAST PETERSBURG ● MOUNTVILLE
AKRON ● GAP