

# What About



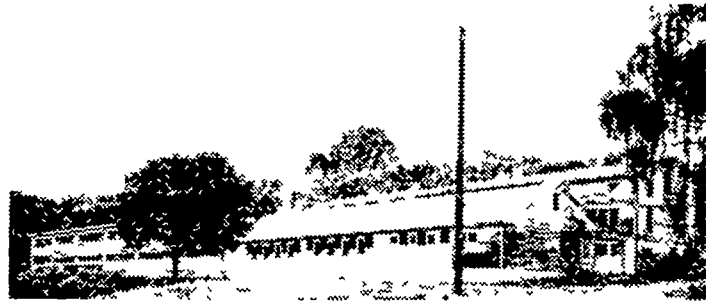
8 week old broilers in a test pen at the Fruitville Farm.

# MORE PROFITS From BROILERS?

As a result of the continuing and intensive research of our Nutrition Department, Miller & Bushong, will on Monday, August 13, start the marketing of

## EARLY BIRD

## NEW IMPROVED BROILER RATIONS



Fruitville Farm, one of the two Early Bird Broiler Research Stations.

### ● What Is Different About These Rations?

1. A DIFFERENT and MORE EFFICIENT balance of the amino acids.
2. ANOTHER SUBSTANTIAL INCREASE in the energy value.

### ● How Will These Rations Perform?

With these rations LESS FEED per lb. of broiler will be required. Our field tests indicate an average 7% improvement in feed conversion. The grower who has been getting conversions in a range of from 2.15 - 2.25, can with equal management and environmental conditions expect meat/ feed ratios of from 2.00 to 2.10.

This means an INCREASED YIELD of about 67 lbs. of broiler meat per ton of feed.

(At 15c PER LB. OF MEAT THIS MEANS AN EXTRA RETURN OF \$10.05 PER TON OF FEED USED.)

### ● How About Production Costs?

The net result will be a SUBSTANTIALLY LOWER COST PER LB. OF BROILER MEAT PRODUCED.

## REMEMBER

GOOD MANAGEMENT  
and  
EARLY BIRD FEEDS

A WINNING COMBINATION FOR ANY POULTRYMAN



## Miller & Bushong, Inc.

Rohrerstown, Penna.

Phone: Lancaster 392-2145

"FINEST SERVICE ANYWH ERE"

### ● Now Is The Time

(Continued from Page 4)

This means that all livestock producers should be on the watch for these plants and for animals not normal. Symptoms include slobbering from the mouth, unstable gaits, staggering, trouble with their breathing, and bleeding from the nose as well as with their droppings. Nightshade, bracken fern, poke berry, water hemlock, and wilting wild cherry leaves are common plants that could cause trouble.

### New Providence 4-H Club Holds Picnic

A joint picnic and meeting was held at the F. D. Atkins farm by the New Providence 4-H Club for members and their families. On the agenda for the day was swimming, games, and dinner.

Robert Henry, New Providence R D #1, and Jay Lehman, Holtwood R D #1, gave their demonstration, "The correct Planting of an Evergreen."

It was announced that the next meeting will be held August 30, at New Providence Elementary School at 7:30 P.M.

Subscribe today—watch it pay!

## SUPPLY FARMERS

137 E. KING ST.

## HINTS FOR AUGUST SEEDING

- Cert. Vernal Alfalfa
- Cert. Ranger Alfalfa
- Cert. Buffalo Alfalfa
- Cert. DuPonts Alfalfa
- Cert. Pennscott Clover
- Ladino Clover
- Timothy
- S-37 Orchard Grass
- Reeds Canary Grass
- Pasture Mix
- Balbo Rye

## GRAIN SEED

Order Now For Fall

- Select Norline Oats
- Cert. Norline Oats
- Cert. Redcoat Barley
- Cert. Wong Barley
- Cert. Seneca Wheat
- Cert. Dual Wheat
- Cert. Pennoll Wheat

## MH - 30

Tobacco Suckering Control  
Gallons — 5 Gallons

## SILO COVERS

14' x 14' - \$3.99

## POLYETHYLENE

for Trench Silos  
12' - 16' - 20' - 24' Widths  
100 Ft. Long