

## LANCASTER POULTRY CENTER Highest Bid Since March

Broiler prices climbed for the second consecutive week at the Lancaster Poultry Center as 74,400 head in 16 lots at the July 12 auction ranged from 17.0 to 18.3 for a sale average of 17.12.

One lot of 800 broilers offered at the Thursday afternoon sale was bid to 17.2 but was not sold. In addition to the broilers, two lots containing 2,350 leghorn tows brought 10 and 10.8 while 1,200 pullets in two lots sold for 24 cents per pound.

The 18.3 bid by Carl B. Risser for 1,000 white vantage pullets at eight weeks, 6 days consigned by Miller and Bushong and grown by Harvey Bowman, was the highest broiler price at the Poultry Center since March 31 when one lot was bought at 18.4, but that sale averaged only 16.79.

The complete July 12 sale offered 78,750 head in 21 lots and sold 77,950 head in 20 lots.

Following is the complete sale report with lot number, seller, grower in parenthesis amount and breed, age in weeks and days, buyer and price.

CODE WV-White Vantress, IRX-Indian River Cross, LP-Laponized Pullets, W Mt-White Mountains

1 Levi M. Beiler, 1750 L-F-Y, W C Mellinger & Son, WV, 9-2, Starr Poultry, 17.1

10.8; 2 Miller and Bushong (John L. Herr), 300 WVLP 11-2 Roy E. Ream, 21.0, 3 Same (same) 900 WVLP 11-2, W C Mellinger & Son 21.0, 4 Same (Wilbert Campbell) 800 WV, 9-1 No Sale 17.2 Bid 5 Same (Harvey Bowman) 1000 WVP, 8-6, Carl B. Risser, 18.3

6 M&B (George Enders) 2200 WV, 8-2 John N. Thomas, 17.1, 7 Robert Harnish, 7000 IRX 8-2, Starr Poultry Co., 17.1 8 C. J. Lauer, 7600 W Mts. 8-3, Daniel K. Good, 17.0 9 Same, 8300 WV & W Mts, 8-2 Daniel K. Good 17.0, 10 C. F. Kopp 2500 WV, 8-6, Roy E. Ream, 17.1

11 Same, 2500 WV, 8-6, Island Poultry Co., 17.1 12 M&B (Fred Sherrick, 4500 WV, 8-6, Island Poultry Co. 17.2 13 Same (same), 4500 WV 8-6, Daniel K. Good, 17.2 14 Same (Elvin H. Nolt) 8600 WVX, 9-1, H. W. Long-acre, Inc., 17.2, 15 Ivan Z. Hoover 1300 WVX, 9-1 Martin Brendle, 17.4

16 M&B (Melvin Grott) 3700 WV, 8-6, Roy E. Ream, 17.1, 17 Jack Bucher 2700 WV & W Mt, 9-0, Island Poultry Co., 17.1, 18 D. E. Horn & Co. (Joseph Myers), 5000 WV, 9-2, Daniel K. Good 17.0, 19 Same (Glenn B. Gockley), 3500 WV, 10-1 Starr Poultry, 17.1, 20 Same (Elvin Kopenhaver), 9700

WV, 9-2, Starr Poultry, 17.1

## Delmarva-Georgia Demand Light; Price Declines

Live prices for broilers in Delmarva declined about 1/2 cent during the 24 hour period ending 10:30 Friday morning.

Demand was lighter for the moderate offerings with prices of 15.9 to 17 reported on 862,000 head at farms during the period. These included 196,300 head purchased at Thursday's auction at the Eastern Shore Poultry Producers Exchange.

Estimated slaughter by eastern shore processors for the week end is 819,700 head compared to 752,000 head last week end.

The Delmarva broiler-lead ratio for the week ending July 6 was up one point from the previous week at 3.3. Broilers averaged 15.68 cents per lb and mash cost of the grower \$95.34 per ton.

## Fluid Milk Seasonal Drop In Production

Although production of fluid milk remained fairly steady in a few areas, milk production in general continued its seasonal decline.

Throughout most of the northeast pastures remained in poor conditions due to lack of rain.

Supplies were adequate for bottling needs in the Northeast as bottling demand tended to decline in metropolitan areas, but increased in resort areas.

In New York diversions to manufacturing plants were light and based on prior commitments while in New England some separating activ-

21 Charles B. Hess, 600, L-F-Y, Carl B. Risser, 10.0

## Weekly New York Egg Mkt.

	From Monday July 9th to Friday July 13th				
	Mon.	Tues.	Wed.	Thurs.	Fri.
<b>WHITE</b>					
EX					
Fcy Hwts	33 1/2	31 1/2	35 1/2	37	37
Fcy Hwts	31 1/2	31 1/2	32 1/2	33 1/2-34	34 1/2-34
Fcy Med	28 1/2	29 1/2	29-29 1/2	29-29 1/2	29-29 1/2
No 1 Med	27	28	28	28	28
Pullets	19	20	19-19 1/2	19-19 1/2	19-19 1/2
Peewees	11 1/2	11 1/2	11 1/2	11 1/2	11 1/2
<b>BROWN</b>					
EX					
Fcy Hwts	33	31 1/2	35 1/2	36 1/2	36 1/2
Fcy Hwts	32	32	33	34	34
Fcy Med	27 1/2	28 1/2	28 1/2	28 1/2	28 1/2
Pullets	19	20	19 1/2	19 1/2	19 1/2
Peewees	14 1/2	14 1/2	14 1/2	14 1/2	14 1/2
<b>MIXED</b>					
Fcy Hwts	30 1/2	30 1/2	31 1/2	33	33
No 1 Med	27 1/2	26	26	26	26
Pullets	19	19	19	19	19
Stds	27-27 1/2	27-27 1/2	27 1/2	28-28 1/2	28-28 1/2
Chicks	23	23	23	23	23 1/2

TREND: Market cleared closely on fancy large but medium and small in ample supplies for current demands.  
Copyrighted 1962 By Uner-Barry Co.

ities were reduced or restricted due to lack of surplus.

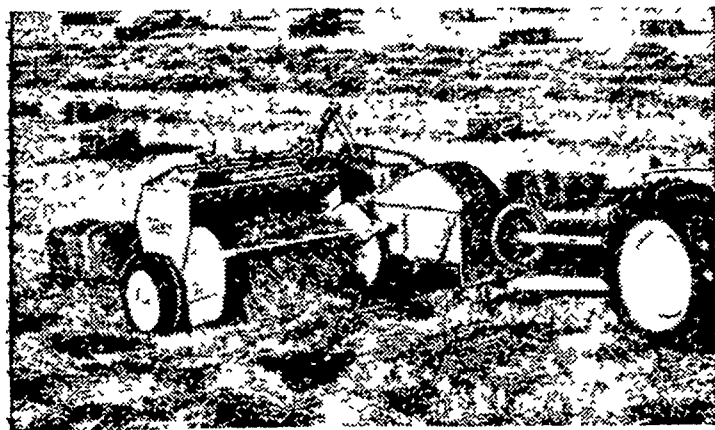
Wholesale selling prices for fluid milk in the New York area ranged \$1.65-\$1.80 per 10 quart unit of bottling quality milk.

## Chicago Cattle

(Continued from Page 2)

25.50, bulk Good 23.25-25.25 25.00-29.00 Standard 20.00-25.00  
Fed loads high Choice and mixed Choice and Prime 975-1100 lb heifers 25.75-26.25, load 1000 lbs at 26.25 highest since late May Choice heifers 21.50-25.50. Good and mixed 25.00-29.00 Standard 20.00-25.00  
Few loads Good and Choice 875-975 lb feeding steers 23-25-24.60, load just Good 462 lb feeding steers 25.35. Some Medium and Good 750-800 lbs 19.50-23.50

## FIRST SHOWING HERE!



### New compact baler with a full-sized appetite

Here's Big Capacity and Keep-Going Performance—the All-New PTO, Twine-Tie Model 200 from Allis-Chalmers.

- It's field proven and customer tested . . . you can depend on it.
- Unique special twin-feed rakes keep hay moving for uniform, well-shaped bales.
- Proved knotters tie quickly, firmly . . . require minimum attention.
- Bale length and weight easily adjusted.
- Built for high-speed baling — rugged, high quality construction.
- Bales stay tied during handling—they are grooved to hold twine, allow air circulation in the stack.
- Built-in protection for baler and tractor—over-running drive clutch, 2 slip clutches plus shear pins.

See the New Model 200 we now have on display. Bale thrower available as optional equipment.

Finance for profit. Ask us about Allis-Chalmers' time payment plans.

**ALLIS-CHALMERS**   
SALES & SERVICE

**N. G. Myers & Son**  
Rheems, Pa.

**L. H. Brubaker**  
Lititz, Pa.

**Nissley Farm Service**  
Washington Boro, Pa.

**Grumelli Farm Serv.**  
Quarryville, Pa.

**L. H. Brubaker**  
Lancaster, Pa.

**Snavey's Farm Service**  
New Holland, Pa.

**Lausch Bros. Equipment**  
Stevens

## WHEN PASTURE FAILS...

### Feed



**Eshelman**  
**S-O-S**  
(Sack-of-Silage)

S—O—S replaces hay, ensilage, or pasture. It is succulent, palatable and bulky; absorbs water readily—and contains more digestible nutrients than wheat feeds. It can be mixed with home grams, too.

Try S—O—S. You'll find it to be a profitable investment!

**E. Musser Heisey** Musser Farms, Inc. Elverson Supply Co.  
R. D. 2, Mount Joy, Pa. R. D. 2, Columbia, Pa. Elverson, Pa.

**Musser's**  
The Buck  
R. D. 1, Quarryville, Pa.

**Leroy Geib Est. Joseph M. Good & Son**  
R. D. 2, Manheim, Pa. 137 Newport Road, Leola, Pa.