

Pennsylvania's Cherry Queen Bakes Pie Fit For A King

June is the month of many celebrations and special occasions, but none more special than cherry time.

Penna's Cherry Queen, Lancaster County's Barbara Gam-

ble who lives with her parents, Mr. and Mrs. Cyrus Gamble Jr., near Mountville, takes advantage of the season to exhibit the pie baking ability that helped win the title for her.

The 18 year old Hempfield High School graduate baked one of her special Luscious Pennsylvania Dutch Cherry pies this week just before the photographer came upon the scene. The proof of the pie was in the eating.

Barbara entered a recipe contest last year during school and became one of 50 national finalists. From the Pennsylvania finalists in the national contest sponsored by the National Red Tart Cherry Institute, Barbara became a contestant for Pennsylvania Cherry Queen in the contest sponsored by the Penna Cherry Growers Association.

Barbara's baking ability is not limited to pies however. Along with Lois Overgaard Lancaster R4 she won a blue ribbon with a breadmaking demonstration in state competition during 4-H judging and demonstration days at the Pennsylvania State University last year.

Judging of foods, clothing and home management won

another trip to PSU for Barbara during the 1960 judging and demonstration days.

(Continued on Page 12)

Here is the recipe which started the chain of events which eventually led to the title of Cherry Queen for Barbara.

LUSCIOUS PA. DUTCH CHERRY PIE

Filling:

- 2 1/2 cups sour cherries
- 1/2 cup cherry juice
- 3/8 teasp almond extract
- 1 cup granulated sugar
- 1 cup brown sugar
- 3 tablesp quick-cooking tapioca
- 1 Tablesp butter

Combine above ingredients (except butter). Stir and let stand 15 minutes.

Crust:

- 1 1/2 cups flour
- 1/2 teasp salt
- 1/2 cup soft shortening
- 4 to 5 tablesp ice water

Combine above and roll two 8-inch pie crusts. Pour cherry mixture into pastry-lined pan. Dot with butter. Adjust top puncture with fork, and flute edges.

Bake in hot 450 degree F oven for ten minutes.

Crumbs:

- 1/2 cup sugar
- 3/4 cup flour
- 1 cup butter

Sprinkle crumbs on top and bake in moderate oven (350 degrees) for 30-35 minutes or until golden brown. Serves six to eight.



PENNSYLVANIA CHERRY QUEEN, Miss Barbara Gamble, Columbia R1, is not a queen in name only. She takes one of her "Luscious Pennsylvania Dutch Cherry" pies from the oven. The recipe won for her a national award in a contest sponsored by the National Red Tart Cherry Institute and led to her election as Pennsylvania's Cherry Queen. She will represent the state's cherry industry during the coming year as an emissary of the Penna. Cherry Growers Association. L. F. Photo.

The Best "Spuds"

are protected by



Thiodan

The New Broad Range Insecticide That Kills All Common Pests

Thiodan kills 'em all—potato beetles, flea beetles, aphids, leafhoppers—with a "one shot" application. Saves time, saves money! And Thiodan is compatible in your spray tank with all commonly used fungicides. Sure kill effectiveness proved over several seasons use. Ready now to go to work profitably for you.

Ask About Other Fine



PRODUCTS

- "658" Fungicide (Copper - Zinc - Chromate) For Early and Late Blight.
- Nutri-Leaf "60" — feeds plants through foliage, a wonderful supplement to ground fertility.

Available at your local dealer or

Miller Chemical & Fertilizer Corp.

P. O. BOX 25, EPHRATA
Phone RE 3-6525

ROHRER'S

have a complete line of Miller INSECTICIDES — FUNGICIDES

P. L. ROHRER & BRO., INC.

SMOKETOWN
Ph. Lanc. EX 7-3539

A Breakthrough in Fly Control

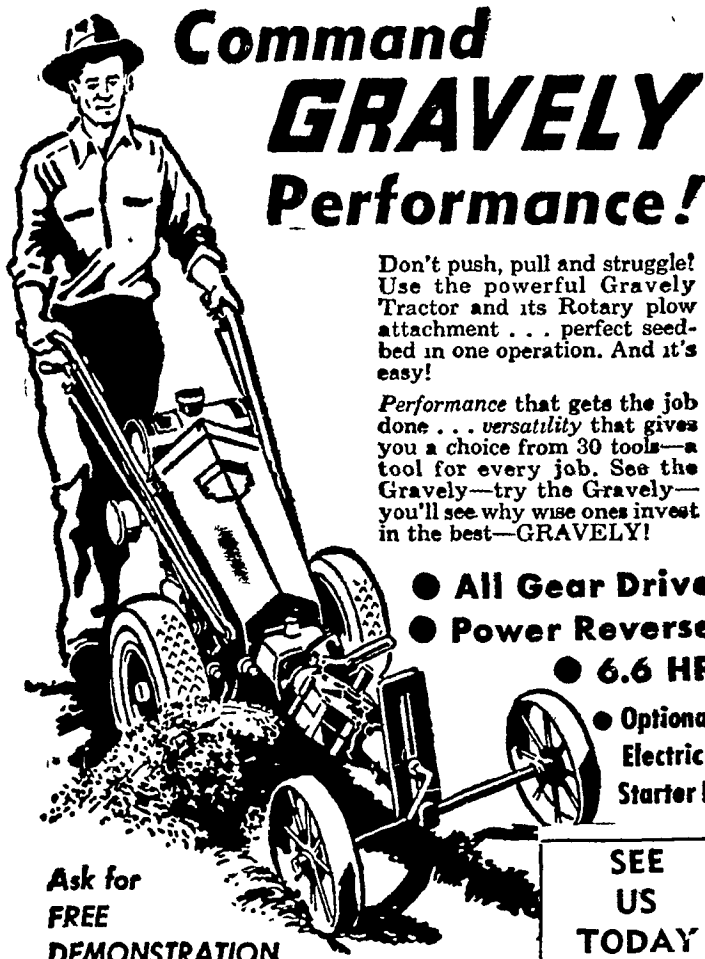
New Cygon dimethoate 4E

One spray of Cygon controls houseflies in dairy barns, poultry houses and animal buildings up to 8 weeks or longer!

Custom Application

Richard R. Forry

2016 Horseshoe Rd., Lancaster.
Phone EX 7-0035



Command GRAVELY Performance!

Don't push, pull and struggle! Use the powerful Gravely Tractor and its Rotary plow attachment . . . perfect seedbed in one operation. And it's easy!

Performance that gets the job done . . . versatility that gives you a choice from 30 tools—a tool for every job. See the Gravely—try the Gravely—you'll see why wise ones invest in the best—GRAVELY!

- All Gear Drive
- Power Reverse
- 6.6 HP
- Optional Electric Starter!

Ask for FREE DEMONSTRATION

SEE US TODAY

JAMES MESSNER

Bareville

Ph. OL 6-6911

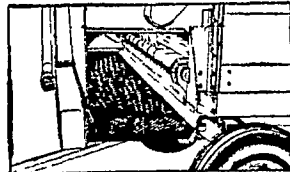
WE SERVICE WHAT WE SELL

RUGGEDLY BUILT FOR LONG LIFE!

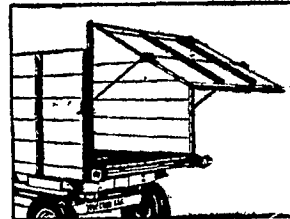


Big 360 cu ft capacity. Mounts on truck or wagon. Operates from P.T.O.

NEW IDEA Forage Box and Bunk Feeder



Unloads from side into blowers or bunk feeders. Large, heavy duty cylinders break up forage and mix in concentrates or preservatives as you unload. Rough-top conveyor belt is extra wide, extra rugged, 36" extension available to increase delivery height.



Unloads from rear into blowers or pit silos. Empties a full load in a few minutes. One man can operate lightweight endgate. All drive chains are safety shielded. Wooden sides and floor are water repellent Penta-treated for long, rot free life. Formed steel channels support bottom and sides, provide upper track and return guide for conveyor chain.

Come in and see this NEW IDEA forage box today!

Chas. J. McComsey & Sons
Hickory Hill, Pa.

A. B. C. Groff
New Holland

Landis Bros.
Lancaster

Wilbur H. Graybill
Lititz, R. D. 2

J. Paul Nolt
Gap

H. S. Newcomer & Son
Mount Joy

J. H. Reitz & Son, Inc.
Lititz, R. D. 4

Allen H. Matz
Denver

A. L. Herr & Bro.
Quarryville