

Soil Conservation

(Continued from Page 6)

type of soil existing there and the slope, drainage and erosion conditions.

Many farmers are surprised to learn just how many different kinds of soil they have on their farm (there are over 700 different types in Pennsylvania). The soil scientist then combines his findings in a simplified land capability map using a color key. The map is drawn on an aerial photograph enlarged to indicate the treatment required on each acre of land. The color green, for example, is a "go ahead" signal for the farmer to do as he wishes with the

land because erosion is improbable. Yellow indicates caution and red indicates extreme caution on cropland and so on through the eight colors of the land classification system.

Farmer Makes The Decisions

Armed with this basic knowledge of his land, the farmer can then make intelligent decisions about his land management program with the help of the soils map and the conservationist, the farmer can go over his land acre by acre to determine how soil erosion can be more effectively curbed and land productivity increased. Together, they develop a farm plan based on the operation and needs of the farm

enterprise.

The plan is the farmer's to carry out at his own rate of speed and alter as his needs require. Thus, the farmer has a scientific step-by-step program he can use to improve his farm and keep his soil at home.

The accomplishments that Pennsylvania's district cooperators have made over the years include establishment of several hundred miles of diversion terraces, nearly three quarters of a million acres of strip cropping, thousands of farm ponds, millions of trees planted, and many other conservation practices such as land drainage, grassland improvement, woodland protect-

ion and wildlife habitat improvement.

How this plan is carried out and some of the measures used in teaming up with nature will be discussed in the next article.

Next Week:
"Supermarket Service in Soil Conservation."



CVA Outlines Plan of Action

A program of action was drawn up by the board of directors of the Conestoga Valley Association at the regular meeting Wednesday night.

The program is built on four points emphasizing a continuing need for more research and education, according to John Kitch, president of the

Kitch listed the four point association program as follows:

1 A continuation of support to the Lancaster County Soil Conservation District in soil conservation programs, with special emphasis on tree planting program.

2 An extension of the limnology studies recently completed by the Academy of Natural Sciences, Philadelphia in 15 new stream locations in 1962-63.

Kitch said the CVA will ask boroughs for limnology site location suggestions and financial assistance to continue the clean stream research.

3. Continue to co-sponsor the silt sampling station on the Conestoga.

4 Develop an educational program for school teachers and the inauguration of a lecture series available to local groups.

Details of the "action program" will be discussed at the July meeting.

Directors voted to give a copy of the recent limnology survey results to the Lancaster Free Public Library.

The meeting was held at the Lancaster County Production Credit Association, 411 W. Roseville Rd.

● Lancaster Poultry

(Continued from Page 3)

M&B (John L Herr), 2000 WVC, 9-2, H W Longacre, Inc., 15 8; 4 Same, 1500 WVP, 9-2, Carl B Risser, 17 5, 5 Same, 900 WVP, 14-2, Carl B Risser, 24 0.

6 Same, 600 WVP, 14-2, NO SALE, 22 4 bid; 7 M&B (Elmer D Leaman), 7000 W-V 8-1, W C Mellinger & Son, 15 9, 8 Ivan Z Hoover, 900 WX, 10-1, Marvin Sweigart, 15 9, 9 Same 700 W-VX, 10-1, Martin Brendle 16 1, 10 Paris Ober, 600 L-F, V. J. Koser Co, Inc., 9 0

11. J Robert Musser, 387 H-F, 16 mo, Marvin Sweigart 14 9, 31 Males, Marvin Sweigart, 8 0, 12 Harry Hossler, 1400 L-G, 24 mo, V J Koser Co, Inc, 9 9; 13 D E Hoin & Co (Claude Rhodes), 7000 Wmt., 9-0, Daniel K Good, 16 0, 14 Same (Robert Shepard), 7000 WV, 9-1, H. W. Longacre, Inc., 16 0, 15. Same, 8000 WV, 9-1, Island Poultry, 16 0.

16 Same (John Munro), 4000 WV, 10-0, Roy E Ream, 15 9, 17 Same, 5800 WV, 10-0, Daniel K Good, 16 0; 18. Same, 5300 WV, 10-0, Starr Poultry, 15 9, 19 Same 5000 WV, 10-0, Starr Poultry, 15 9, 20 J Robert Musser, 1161 H-F, 16 mo, W C Mellinger & Son 14 8, 94 Males W. C. Mellinger & Son, 8 0.

Uniformity Good

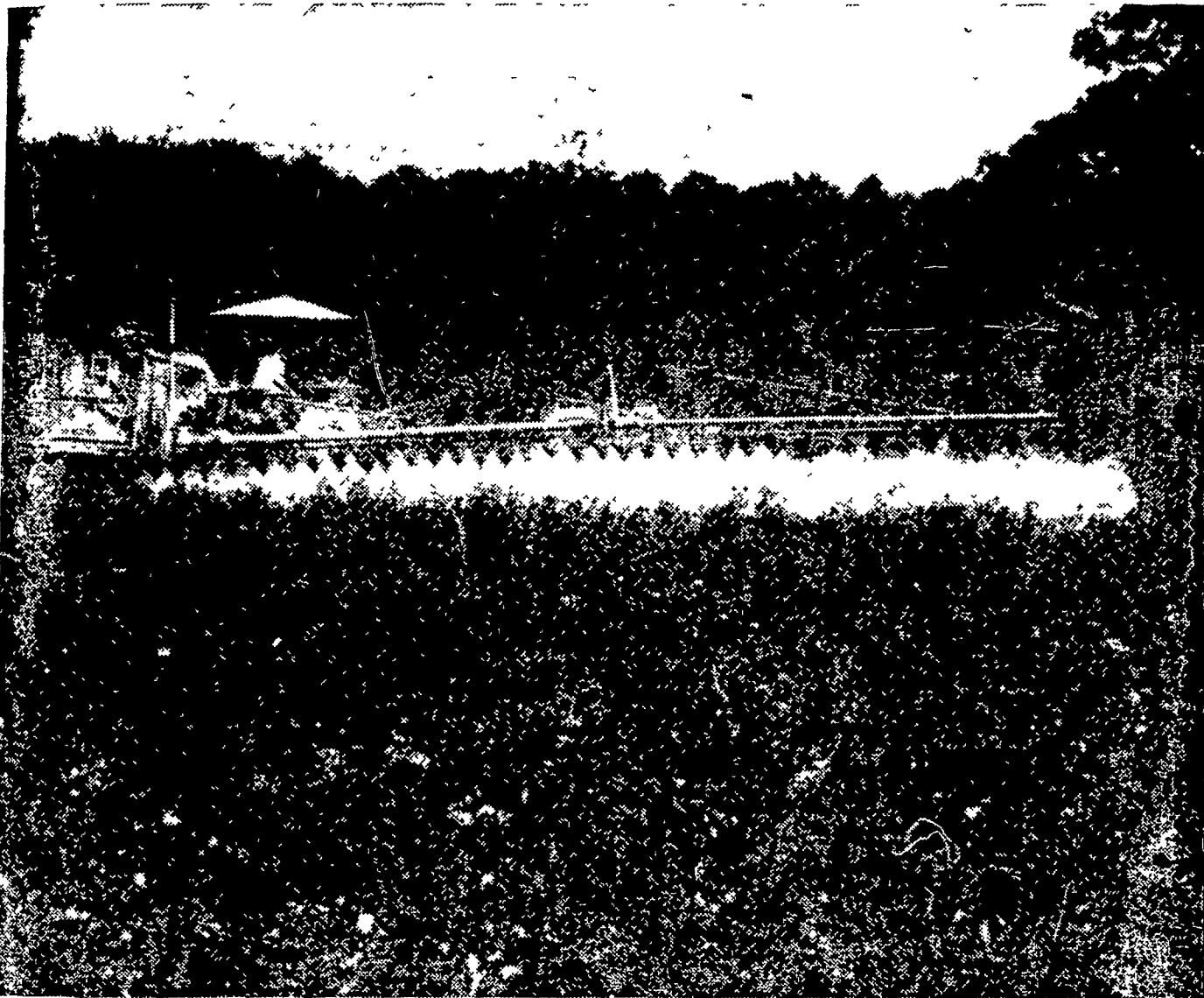
Uneven growth and ruffled plumage conditions in the poultry flock usually indicates lack of normal health, improper nutrition, or faulty brooding, advises Herbert C Jordan, extension poultry specialist. Flocks doing exceptionally well usually are quite uniform in size, development and feathering.



**Lancaster Co. Distributors for Manzate
MILLER CHEMICAL and FERTILIZER CORP.**

P. O. Box 25, EPHRATA

Phone RE 3-6525



Tough on disease but mild on plants, "Manzate" gives you sure protection against the major fungus diseases that attack tomatoes.

Powerful disease protection begins with Du Pont MANZATE®...ends with more #1 tomatoes. Whenever you use Du Pont "Manzate" maneb fungicide, you get powerful disease protection. Over a decade of field applications—in every important tomato area—proves "Manzate" is tops for disease control. This year, for healthier, heavier harvests—and extra profits, too—spray your tomatoes regularly with "Manzate". You'll see why it's still the first—and the last—word in fungicides.



On all chemicals follow labeling instructions and warnings carefully.

Better Things for Better Living...through Chemistry

MANZATE AND OTHER DUPONT PRODUCTS

distributed by

J. C. EHRLICH CHEMICAL CO., INC.

736 East Chestnut Street

Lancaster, Pennsylvania

Phone EX 7-3721