

Volume And Prices Dip

Both price and volume were down at the Lancaster Poultry Center this week as 62,100 broilers in 13 lots changed hands at prices of 15.8 to 17.5. With only three per cent of the birds bringing over 16, the sale averaged 15.98. The average at last week's sale was 16.38.

One lot of 900 pullets brought 24, and one lot of 600 pullets failed to sell at the bid of 22.4. All other lots on offer were sold.

Five lots of fowl sold. Two lots of leghorn fowl brought 9 to 9.9 for the 2,000 head. Three lots of heavy fowl sold at 14.5 to 14.9 for the 1,998 head.

At the corresponding sale last year, only 24,250 broilers

in five lots were sold. The sale average last year was 15.5. The complete June 21 auction offered 67,725 head in 20 lots and sold 67,125 head in 19 lots.

Following is the complete sale report with lot number, seller, grower in parenthesis, amount and breed, age in weeks and days, buyer and price.

CODE: WV - white vantage, H-F - heavy fowl, X - cross, P - pullets, C - cockerels, L-F - leghorn fowl, WMt. - white mountain.

1. Miller & Bushong (David S Hoover), 7000 WVX & JB-1's, 9-0, Starr Poultry, 15 9, 2 J Homer Graybill, 450 H-F, Marvin Sweigart, 14 5: 3.

(Continued on page 7)

Delmarva-Georgia

Broiler Prices Dip Fractionally

Live broiler prices averaged fractionally lower during the 24 hour period ending 10.30 Friday morning with a good demand for the light offering. Ready to cook prices in Delmarva were unchanged.

At farm prices on 1,048,700 head reported purchased during the period ranged from 15 to 15.60 including 654,200 head purchased at the Eastern Shore Poultry Producers Exchange Thursday. At the sale, 54 per cent of the purchases were 15 to 15.4.

Estimated slaughter for the week end by Eastern Shore processors was 725,999 as compared to the 756,000 head last week end.

Fluid Milk

Production Dips Slightly Nearby

Fluid milk production in the southeast increased in some quarters during the past week, but in most other areas production decreased slightly.

Supplies, though lighter were ample in most areas with plentiful supplies in Wisconsin and very light interest from out of state buyers.

In Pennsylvania, shipments to out of state points were moderate. Bottling demand in New York was good but fair

Weekly New York Egg Mkt.

From Monday, June 18th to Friday, June 22nd

| | Mon. | Tues. | Wed. | Thurs. | Fri. |
|-----------------|--------|--------|--------|--------|--------|
| Whites | | | | | |
| Ex. Fcy. Hywts. | 33 | 33 | 33 | 31 | 29 |
| Fcy. Hywts. | 30 | 30 | 30 | 29 1/2 | 29 1/2 |
| Fcy. Med. | 24 | 23-24 | 23-24 | 21 1/2 | 20 1/2 |
| No. 1 Med. | 23 | 23 | 23 | 21 1/2 | 21 1/2 |
| Pullets | 17 1/2 | 17 1/2 | 17 1/2 | 17 1/2 | 17 1/2 |
| Peewees | 14 1/2 | 14 1/2 | 14 1/2 | 14 1/2 | 14 1/2 |
| Browns | | | | | |
| Ex. Fcy. Hywts. | 33 | 33 | 33 | 33 | 33 |
| Fcy. Hywts. | 32 1/2 | 32 1/2 | 32 1/2 | 32 1/2 | 32 1/2 |
| Fcy. Med. | 24 | 24 | 24 | 24 | 24 |
| Pullets | 17 1/2 | 17 1/2 | 17 1/2 | 17 1/2 | 17 |
| Peewees | 14 1/2 | 14 1/2 | 14 1/2 | 14 1/2 | 13 |
| Mixed | | | | | |
| Fcy. Hywts. | 29 1/2 | 29 1/2 | 29 1/2 | 29 1/2 | 29 |
| No. 1 Med. | 22 1/2 | 22 1/2 | 22 1/2 | 21 1/2 | 20 1/2 |
| Pullets | 17 1/2 | 17 1/2 | 17 1/2 | 17 1/2 | 17 |
| Stds | 27 1/2 | 27 1/2 | 27 1/2 | 27 1/2 | 27 1/2 |
| Checks | 23 1/2 | 23 1/2 | 23 1/2 | 23 1/2 | 23 1/2 |

TREND: Market continues weak and under continued selling pressure from surplus white.

Copyrighted 1962 By Uner-Barry Co.

in other areas as a result of school closing.

A lighter surplus was diverted to cheese and separators and reported well cleared.

Wholesale selling price in New York ranged \$4.40 to \$4.50 per 40 quart unit of bottling quality milk

A Breakthrough in Fly Control

New Cygon dimethoate 4E

One spray of Cygon controls houseflies in dairy barns, poultry houses and animal buildings up to 8 weeks or longer!

Custom Application

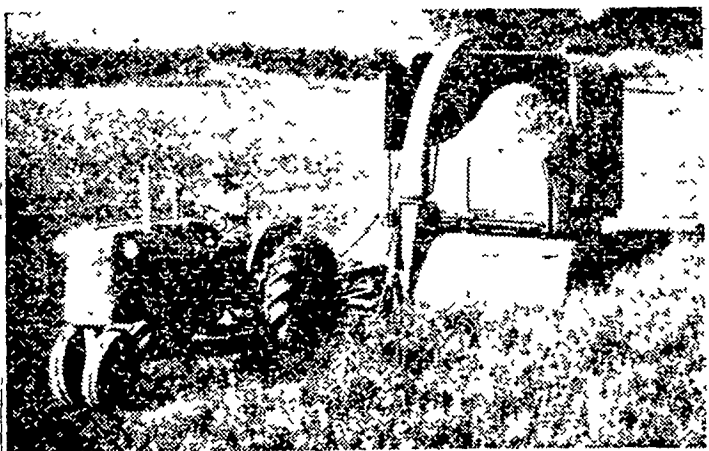
Richard R. Forry

2016 Horseshoe Rd., Lancaster.
Phone EX 7-0035

ANNOUNCING...

New Allis-Chalmers Model 56-F flail-type forage harvester

Now Allis-Chalmers brings new capacity, quality, and field performance to forage harvesting with the all-new 6-foot No. 56-F Forage Harvester.



Big Capacity, Scissor-Slice Chopping Double-Cuts Cleaner, Shorter!

- All-season use value: Green-chop feeding . . . makes grass silage you can remove from silo . . . stalk chopping . . . stubble mulching . . . shreds bedding . . . pasture clipping.

Heavy-duty, clean-cutting rotor

- 36 knives mounted in pairs . . . every rotor revolution, forage is cut TWICE in the same 4-inch path.

Ask us about the Allis-Chalmers plan to finance your time purchase of farm equipment.

ALLIS-CHALMERS
SALES AND SERVICE



N. G. Myers & Son
Rheims, Pa.

L. H. Brubaker
Lititz, Pa.

Nissley Farm Service
Washington Boro, Pa.

Grumelli Farm Serv.
Quarryville, Pa.

L. H. Brubaker
Lancaster, Pa.

Snavey's Farm Service
New Holland, Pa.

Lausch Bros. Equipment
Stevens

GOOD PROFITS start with GOOD FEEDING

This Summer use these

Red Rose DAIRY FEEDS



Red Rose Fitting Ration

(12% protein). It's ideal for cows with good roughage and pasture; for cows during dry periods and for young stock and bulls.

S-O-S— Replaces hay, ensilage or pasture. Is succulent, palatable and bulky; absorbs water readily and contains more digestible nutrients than wheat feeds. Can be mixed with homegrown grains, too.

RED ROSE RUMENATOR— This ration is an excellent booster feed or appetizer for dairy and beef animals of all ages. It supplies high levels of available energy and "vitamin lift" to keep herds in top condition. Red Rose Rumenator improves appetites and increases milk production. Try it!

RED ROSE 32% DAIRY SUPPLEMENT

fits perfectly into a feeding program with your supply of homegrown grains . . . to make dependable, economical rations.

Buy Red Rose Feeds From These Distributors

E. Musser Heisey
R. D. 2, Mount Joy, Pa.

Elverson Supply Co.
Elverson, Pa.

Musser Farms, Inc.
R. D. 2, Columbia, Pa.

Musser's
The Buck
R. D. 1, Quarryville, Pa.

Joseph M. Good & Son
137 Newport Road, Leola, Pa.

Leroy Geib Est.
R. D. 2, Manheim, Pa.



LOANS

FOR ANY FARM PURPOSE
MADE THE FARMER'S WAY

LANCASTER
PRODUCTION
CREDIT ASS'N
411 West
Roseville Rd.
Lancaster, Pa.

Ph. Lanc.
EX 3-3021



Pleased with your pullets?
HONEGGER LAYERS may correct some of the problems in your hen house —

especially if you expect more from your hens then you're getting —
Try 'em and See!

J. HOWARD MOORE
R. D. #1
LITITZ, PENNA.
Phone: MADison 6-5408

Windle's Hatchery
COCHRANVILLE, PA.
Phone: Atglen LY 3-5941