

Farm Calendar

(Continued from Page 1)

Lampeter Demonstration of water safety
 7:30 p.m.—Meeting of the Conestoga Valley 4-H Cooking club at the Conestoga Valley High School
 June 13-14-15—FFA Week at the Pennsylvania State University
 June 13—7:30 p.m.—County Guernsey 4-H club meets at the farm of Harvey Ferguson, Kirkwood R1
 June 14—7:30 p.m.—Kirkwood 4-H Community club project tour
 7:30 p.m.—Lititz-Manheim 4-H Community club meets at the home of Raymond Stoner, 1051 Eden Road, Lancaster
 June 15—7:30 p.m.—Meeting of the Boots and Saddles light horse and pony 4-H club meets at the home of

SALE REGISTER

Sat Aug 1 and 18 1962 at 10 a.m. Public Sale of Garage and Restaurant Equipment located at Evers Service Center 360 W Market St Hellam Pa Terms by Evers Service Center Jacob A Gilbert, Auct
 Sat Aug 11 and 18, 1962 Pub Sale of full line of household goods and antiques Lawn and garden equipment Some farm equipment For Mrs Earl V Hostetter along Rt 896 just east of Strasburg Diller and Krieder, Aucts
 Robert Gible, Manheim R2
 June 16—10 a.m.—Auctioneers Association sale for the benefit of Multiple Sclerosis Fund, at the Paul Z Martin sale barn in Blue Ball

Chicago

(Continued from Page 2)
 lower, mostly 50 higher, mostly 50 higher and about as high as any time so far this year Bulls steady to 50 higher Vealers and feeders fully steady
 Six loads mostly prime 1225-1325 lb slaughter steers 27.50-28.25, best price Wednesday 28.00, weeks bulk high choice and mixed choice and prime 1100 - 1350 lb steers 26-27.50, prime 1055 lbs 26-25 bulk choice 950-1350 lbs

Lancaster Poultry

(Continued from Page 3)
 Risser 80 28 D E Horn & Co (Harold Chronister) 8500 WV, 9-3, Starr Poultry, 16 1 29 Same (Martin S Landis), 4000 WV, 9-1, Roy E Ream, Strock, 4000 WVC, 8-2, Island 16 3, 30 Carl L Martin, 550 L-F, WITHDRAWN PRIOR TO SALE Same 40 Males, WITHDRAWN PRIOR TO SALE
 31 Paul N Buebaker, 450 WSXP, 16-0, Carl B Risser, 23 1 32 Same, 2600 BSXP, 16-0, NO SALE, 19 0 BID, 33 Sylvan Stoltzius, 45 L-F, Roy E Ream, 7 0 34 Abner Fisher, 500 L-F V J Koser Co Inc, 9 3 35 Longenecker's Farm, 67 Males V J Koser Co Inc 7 1
 36 M&B (John Olesh, Jr) 1550 WVP 14-0 W C Melinger & Son 22 4, 37 Andrew N Miller 2000 WV, 9-2, Daniel K Good, 16 2 38 Longenecker's Farm 80 Males V J Koser Co Inc, 7 1

24.50-26.25, loadlots mixed Utility and commercial bulls good and choice 24-25, mostly 18 50-20.50 few good 1500, 24 25 and 24 50, bulk good 1800 lb fat bulls 15-16, steers 22 50-21 50 Good and choice vealers 25, Load mixed choice and prime 28
 1025 lb heifers early 25-75, several loads comparable 25 75, few choice 700-750 lb, heifers after Monday 25 40 24 50-25 75, medium and good 650 lb mixed steer and 23 50 and 23 50
 Few standard cows 18-18 50 heifer feeders 22 50



TOP QUALITY HOFFMAN RYE GRASS
 READY NOW

See Your Hoffman Seed-Man

A. H. HOFFMAN SEEDS, INC.

LANDISVILLE, PA. PHONE TW 8-3421

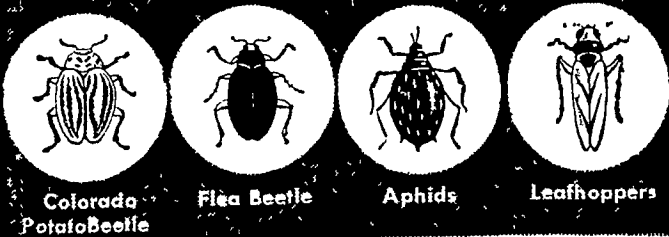
Potato Growers You Need



Thiodan

The new broad range insecticide

KILLS ALL COMMON POTATO PESTS



With this important new chemical discovery—Thiodan—you get a multiple kill of several potato pests at the same time. This means one shot control which, of course, is a more economical way to protect your crop.

Thiodan is a concentrate. Just mix with water and apply with ground or air spray equipment. And Thiodan is compatible with all commonly used fungicides. Its effectiveness has been proved over several seasons.

Ask about other

Fine **MILLER** Products

- "658" Fungicide (Copper-Zinc Chromate) For Early and Late Blight
- Nutri-Leaf "60" — feeds plants through foliage, a wonderful supplement to ground fertility.

AVAILABLE AT YOUR LOCAL DEALER OR



Miller Chemical & Fertilizer Corporation
 P. O. BOX 25, EPHRATA
 Phone RI 3-6525

ROHRER'S

have a complete line of Miller
 INSECTICIDES — FUNGICIDES

P. L. ROHRER & BRO., INC.

SMOKETOWN

Ph. Lanc. EX 7-3539

Get a Head Start toward PROFITS...

E.N. FEEDING

(EARLY NUTRITION)



How can you be sure of making highest profits on your swine? By producing strong animals that mature quickly. Early Nutrition is the first step toward that fast development. Early Nutrition gives your pigs the proper foods to develop . . . and the proper fortification to minimize the slow-down effects of stress periods.

You can depend on scientifically-formulated, tested-on-the-farm and profit-planned Red Rose Feeds for a head start and a fast finish.

These Red Rose Feeds will give your pigs the Early Nutrition they need and help you toward the higher profits you want.
 Red Rose Pig Pre-Starter Pellets
 Red Rose Pig Starter Pellets
 Red Rose Pig Grower Pellets
 Red Rose Swine supplements.

For your complete Red Rose Early Nutrition Feeding Program see your Red Rose Dealer.



Ammon E. Shelly
 R D 2, Lititz Pa.

Brown & Rea
 Atglen, Pa.

Mountville Feed Service
 R D 2, Columbia, Pa.

A. S. Groff
 North Queen Street
 Lancaster Pa.

West Willow Farmers Association
 West Willow, Pa.