



PLENTY OF WATER to irrigate the tobacco beds which can be seen to the far left of the picture, and plenty more to water the hillside where the Holsteins are grazing, flows away from the artesian well on the farm of John Thomas, Jr. near Letort. If he completes the plans he now has, Thomas will put the valves shown here under the ground with one pipe running to the barn, (out of sight to the left of the picture) one pipe leading to the house, and one running to the corner of the yard near the tobacco beds. A trough with fountain will be erected over the well itself.

L. F. Photo

Artesian Well

(From Page 1)

Sight-seers begin to flock to the well like bees to honey. Over 200 came on Sunday to stare and wonder and take pictures from every angle. By the middle of the week over three hundred of the curious had made the trip down the lane, which had become so dusty that the Thomas family felt it might be forced to move out.

Thomas put his inventiveness to work, and with the help of spray rig and the oil

drumming from a nearby garage he put down a dust control

And still the well gushes and still the camera buzzes come to ask Thomas to take one more sip from the cool (48 degree) water, while shutters snap and heads shake and utterances of disbelief fill the air.

You just think it has to stop," said one visitor staring at the fountain as though hypnotized.

"I don't think it is going to stop," says Thomas who has not yet decided what use

to make of his fabulous strike. His present plans are to install a pipeline to the barn for a supply for his dairy, another line to the house, and still a third to the corner of the yard and garden for irrigation purposes.

For this purpose he has had constructed a fitting with two 2 inch valves and one 1 1/2 inch valve.

They told me at first that we couldn't cap the well or the pressure would hit the casing out of the well, but I'm not afraid of that. Thomas said A pressure gauge in one of the lines measured the pressure at only two pounds per square inch.

With that much pressure, I'm not afraid of it pushing the casing out he said but he has put an extension on the six inch casing, and the water flowed out the top 11 feet above ground level. No one knows for sure just how high the water would rise if the pipe were high enough. Old timers in the area declared they had never seen anything like it, and himself said he had never brought in a well as good as this.

When a visitor Thomas put a seal on the end of his pipe and admission to see the well. He replied, "I don't know if I'll do yet or not. It's changed pretty fast in a few days."

And one wag was say, "Well, that's a defect, and we won't be

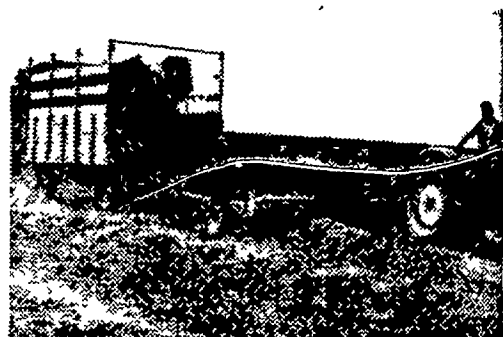
Attention Farmers!

Trade-Up to a NEW HOLLAND For '62

BALE TWICE AS FAST WITH HALF THE LABOR!

Today there's a new way to bale—that lets one man bale and load faster than a 2- or 3-man team! The new system consists of a New Holland Hayliner plus a simple, foolproof mechanism that "lifts" the bales into a trailing wagon.

It costs surprisingly little. In fact, the lowest priced Hayliner—the new Compact Hayliner 65 with Full Flow feed—costs no more with Bale-Thrower than many balers without automatic wagon loading! You get the job done in half the time—all by yourself! See us about a demonstration today.



RAKES "WHISTLE-CLEAN" ANYWHERE!

From New Holland—the advanced Model 56 Rolabar Rake! Its cleaner raking action puts more hay... more dollars... into the windrow. Saves nutrient-rich leaves and blossoms, to cut feed supplement costs. Check these big exclusives:

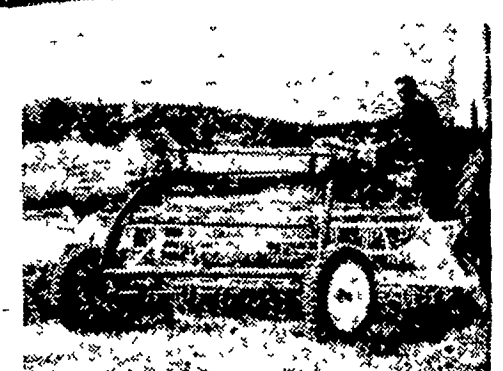
New offset wheels, "floating" basket give cleaner, smoother raking, prevent tooth breakage.

100-acre lubrication makes lubricating a once-a-season job for many farmers—instead of a daily one.

Patented spring-loaded jack for fast, easy hitching.

Patented tooth adjustment. Tines are individually replaceable.

See the "56" here today... test it on your farm tomorrow!



ALL THE FEATURES FARMERS DEMAND!

No matter what type of mower you prefer mounted, semi-mounted or trailing—you get more field-proved features when it's a New Holland! For example, check the quality features on the New Holland "47" semi-mounted mower.



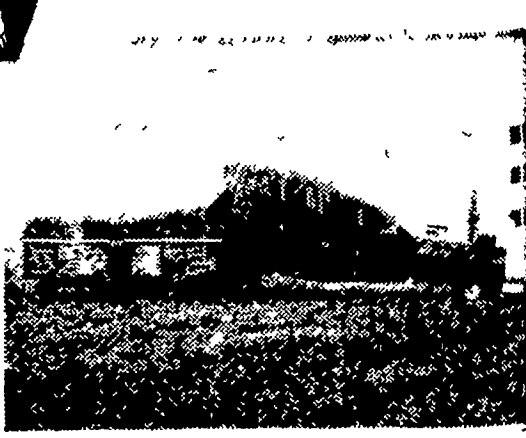
MASTER CROP MOISTURE!

Dry Your Crops Overnight With New Holland's 750 Dryer!

End leaching and bleaching with a Model 750 Crop Dryer from New Holland! The '750' boosts hay quality, cuts feed costs! Just flick a switch, dial your heat, and let science dry your hay or grain!

Dry air sweeps through New Holland's Model 776 Crop Drying Wagon, picking up moisture throughout the entire load. Rugged corrugated sides are bolted for flexibility, are sectionalized for convenience.

See us today for all the facts about New Holland's 750 Dryer and 776 Drying Wagon.



NEW

GROUND CONTROLLED SILAGE DISTRIBUTOR

fills your silo evenly... safely... with less labor!

No more climbing the silo to hand-level silage... no more hazardous work over an empty silo or in dangerous silage gases. The new Badger-Thompson Silage Distributor takes over at silo filling while you stay safely on the ground... helps you pack in more tons, uniformly and evenly to produce consistently good quality feed.

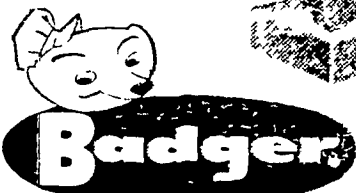
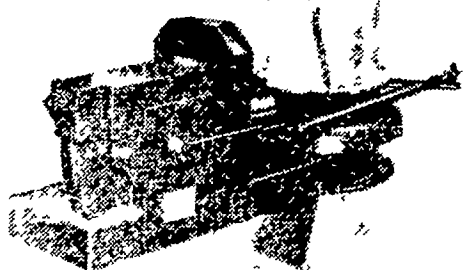
There's no hand-packed off-center or leaning core to put uneven pressure on silo walls... no loose-packed areas that spoil. Silo unloaders work better too.



HERE'S HOW IT WORKS

This distributor mounts on an forage blower... all adjustments are made at ground level. It oscillates the blower pipe while the head directs the material in a circular pattern.

Adjusts to any silo size 10 to 30 feet. Fits any make blower 7 to 9 inch pipe.



Grumelli Farm Service
R. D. #1 - Quarrsville

Jacob F. Beiler
R. D. #1 - Kinzers

Raymond Gehman
Bowmansville

R. M. Brubaker
Salunga

Farmersville Eqpt.
Company, Inc.
R. D. #2 - Ephrata

More Farmers Buy Badger Silo Unloaders Than Any Other



Your Local Lancaster County New Holland Dealers