

**Ralph Fired**

(From Page 1)

ledged illegal actions in connection with cotton acreage allotments and grain storage operations under the Department of Agriculture. He has been further indicted in connection with obtaining credit using non-existent fertilizer storage tanks for security.

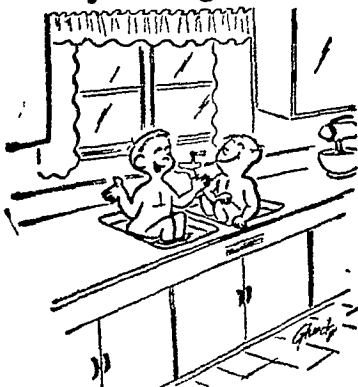
Detailing his action against Ralph, Freeman's statement said "The Department of Justice has reported to me that personal long-distance phone calls were made by Dr. Ralph and charged to Billie Sol Estes credit cards. This activity, combined with those disclosed in Dr. Ralph's testimony in Texas regarding his relationship with Estes, does not, in my judgment measure up to the high standards of conduct required for a person representing our government in an overseas assignment."

Freeman said the department is continuing its investigation. He added that the FBI and the Senate Investigations subcommittee and a House Government Operations subcommittee that are looking into the case are receiving every cooperation in their investigations.

Ralph, a presidential appointee, joined the department shortly after the Kennedy administration took office last year. He had been director of the California State Department of Agriculture.

Scientists of the U.S. Department of Agriculture have learned that soil treatment and cultivation will reduce fallout levels. Should fallout contaminate a limited area, it can be completely removed by scraping off a few inches of soil.

**My Neighbors**



"You wash—and I'll wipe."

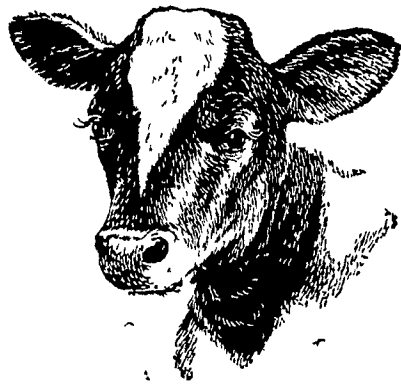
**Why Crops Need Limestone**

Two important ingredients needed by crops are calcium and magnesium. Both of these are regularly lost through the soil by the following ways:

1. By leaching (a slow leaking away—a normal process where there is rainfall)
2. By crop removals (legumes, such as hay and other greens, are taken off the fields, instead of plowed under)
3. By general use of the soil

Because of this loss, the soil becomes what is known as high in acid. Putting on limestone may supply calcium and magnesium and correct the soil acidity at the same time. It has been shown by experiments by agricultural colleges and experiment stations that for every dollar spent for limestone from \$3 to \$15 are returned to the farmer through increased yields.

—Adv. by Ivan M. Martin, Inc., Blue Ball, Pa.



A dairy calf takes about two years to develop into a milking cow and prove her worth as a producer. This means about two years or so of her owner's time, labor, feed, barn space, money and worry—and all this with the hope she will be a profitable producer.

But, a cow a calf will be. How well-nourished the calf is (together with her inheritance) will determine what kind of cow the calf will be.

Get a head start toward profits by feeding Red Rose Dairy Feeds to your young stock to produce strong animals that will mature quickly . . . and take their place in the milking line earlier.



**Ammon E. Shelly**  
R D 2 Lititz, Pa.

**Brown & Rea**  
Atslen, Pa.

**Mountville Feed Service**  
R D 2 Columbia, Pa.

**A. S. Groff**  
North Queen Street  
Lancaster, Pa.

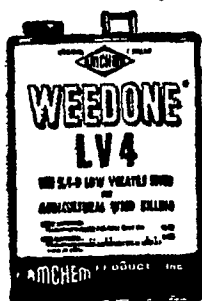
**West Willow Farmers Association**  
West Willow, Pa.

**ROHRER'S Offer A Complete Line**

Insecticides - Fungicides - Weed Killers  
Fertilizers and Plant Starter

- Arsenate of Lead 3 lb. 1.20
- Ferbam 3 lb. 2.10
- Sterptomycin 1 lb. 5.25
- 50% D.D.T. 4 lb. 1.60
- 53% Duo Copper 6 lb. 2.75
- 15% Parathion 3 lb. 1.95
- 25% Malathion 5 lb. 2.95
- Dithane M-22 3 lb. 2.85
- 10% Chlordane Dust 5 lb. 1.95
- 5% D.D.T. Dust 5 lb. 1.25
- 5% Sevin Dust 4 lb. 1.60
- Potato, Tomato Dust 4 lb. 1.39
- 1% Rotenone Dust 4 lb. 1.39
- Melon & Cucumber Dust 3 lb. 1.49
- 4% Malathion Dust 4 lb. 1.25

**Weedone 2, 4D**



Weedone LV-4

(Low Volatile Ester)  
1 gal. can . . . . . \$5 25  
5 gal. can . . . . . \$24 75

**Weedar 64 (Amine)**

1 gal. can . . . . . \$3.75  
5 gal. can . . . . . \$17.50

**ATRAZINE 80W**

5 lb. bag . . . . . 2.85 lb.  
Amitrol T . . . . . 11.35 gal.  
Alanap-3 . . . . . 1.95 gal.  
Amino Triazole . . . . . 3.50 lb.  
4 lb. canister 9.95 each

**LINDANE**

20% emulsion 1-gal. 11.00  
5-gal. Can (per gal.) 10.50

**METHOXYCHLOR**

5-gal. . . . . 22.25  
30 gal. drum . . . . . ASK  
INCREASE YIELD and improved quality of your hay crops by adding to your spittle bug spray.

**Nutri-Leaf (20-20-20)**

5 lbs. . . . . 1.75  
25 lbs. . . . . 7.50

**OSOTOX Transplanter Solution**

is a Lindane solution that mixes readily with water and is designed especially for use in the transplanter. Gives low cost protection against wire worms, maggots and certain other soil insects.



**ORTHO GRO LIQUID PLANT FOOD**

1 qt. . . . . 1.69  
1 gal. . . . . 4.95  
5 gal. . . . . 14.75  
VHPE 3 lb. bag .90  
Case 10-3 lb. bags 7.50

**A Complete Line of ORTHO PRODUCTS**

Available At

**P. L. Rohrer & Bro., Inc.**

SMOKETOWN

Phone Lanc. EX 7-3539



TM Reg US Pat Off ORTHO

**potato pests can't hide from Phosphamidon**

You've probably read about the insect-seeking Killer-ORTHO Phosphamidon. We have it. We've seen it work. We recommend it for eliminating potato pests.

Here's why.

Wherever insects hide safe from other sprays (under the curl of a leaf, in crevice of a stalk) Phosphamidon hunts them down. And kills them. Phosphamidon kills on contact. But, it doesn't have to. It is absorbed by the foliage and penetrates the entire upper part of the plant system. Result: a "remote control" kill that gets the hidden insects other sprays miss.

The list of insects reads like an encyclopedia of potato pests: Colorado potato beetle (even the resistant one), all varieties of aphids, flea beetles, corn borers, leaf hoppers — just about every insect that chews or sucks. What's more, most insects that are resistant to other sprays find Phosphamidon irresistible.

Phosphamidon is absorbed so quickly that workers can enter the fields a few hours after spraying. And the natural predators that feed on harmful potato insects can safely return too.

Don't spray money away, hit or miss, with ordinary sprays — come in or phone us for your Phosphamidon requirements. With Phosphamidon you just can't miss.



**ORTHO PRODUCTS**

Distributed by

**J. C. Ehrlich Chemical Co., Inc.**

736 EAST CHESTNUT ST.

LANCASTER, PA.

PH. EX 7-3721

**P. L. ROHRER & BRO., INC.**

SMOKETOWN

Ph. Lanc. EX 7-3539