

Spring Crop Planting Begins Weather Slows Grass Growth

Corn and soybeans went in to the field this week on county farms. Cool weather and dry soil conditions prevented much growth but the absence of any severe drying winds have given the plants a good chance to become established.

Dairy men are evening weather and forage crops. Alfalfa has made slow growth due to cool temperatures and dry conditions but last fall seedlings of alfalfa look better than was anticipated last fall and earlier this spring. Some poor stands are a direct result of the dry August last fall.

Spraying for spittle bugs and alfalfa weevil has started on a few farms that were not sprayed last fall. Weevil populations in some unsprayed fields are reported to be high to severe. Spittle bug masses have not yet formed in large numbers but some evidence of the pest is noted in unsprayed fields.

Pasturing of dairy cattle is pretty general throughout the county with the amount of feed furnished by pasture about normal for this time of year.

A few fields of early corn were planted this week but general corn planting will not begin for another week. Reports from soil thermometers placed by University agronomists indicate soil temperatures high enough for corn

planting. Work schedules on Pennsylvania farms are well ahead of the progress made up to this time last year, the State Crop Reporting Service said in its weekly crop and weather summary.

The outlook for the State fruit crop is very good. Weather conditions have been generally favorable for pollinating, and there has been no significant frost damage. The South Mountain, Berks-Lehigh and Erie County fruit growing areas run the gamut from bud to full bloom.

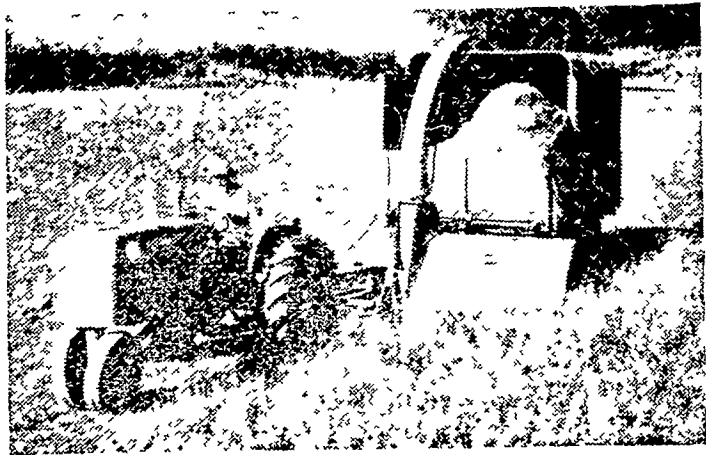
Oats plowing and planting is moving to a finish. Winter and spring grain crop conditions are very good. Planting of corn has started in southern counties.

Planting of cobbler potatoes is in the final stage and the tall potato crop is going into the ground on schedule. Asparagus cutting moved to the light volume point with higher temperatures. Strawberry beds are coming into bloom in southern counties. Planting of peas is about two-thirds completed. Seeding and transplanting of other vegetables is in full progress.

Pastures and meadows benefited from additional light rainfall last week. Moisture supplies are adequate in most areas with a few localities in either short or surplus condition.

ANNOUNCING... New Allis-Chalmers Model 56-F flail-type forage harvester

Now Allis-Chalmers brings new capacity, quality, and field performance to forage harvesting with the all-new 6-foot No. 56-F Forage Harvester.



**Big Capacity, Scissor-Slice Chopping
Double-Cuts Cleaner, Shorter!**

- All-season use value: Green-chop feeding . . . makes grass silage you can remove from silo . . . stalk chopping . . . stubble mulching . . . shreds bedding . . . pasture clipping.

Heavy-duty, clean-cutting rotor

- 36 knives mounted in pairs . . . every rotor revolution, forage is cut TWICE in the same 4-inch path.

Ask us about the Allis-Chalmers plan to finance your time purchase of farm equipment.

ALLIS-CHALMERS 
SALES AND SERVICE

N. G. Myers & Son
Rheims, Pa.

L. H. Brubaker
Lititz, Pa.

Nissley Farm Service
Washington Boro, Pa.

Grumelli Farm Serv.
Quarryville, Pa.

L. H. Brubaker
Lancaster, Pa.

Snavelly's Farm Service
New Holland, Pa.

Lausch Bros. Equipment
Stevens

CHECKERBOARD

Service bulletin

How to Save \$15 or \$20 per Hundred Pullets

Do you know that you may save as much as \$15 or \$20 on every hundred pullets you raise this year? You do it by following the Purina Controlled Pullet Growing Plan.

After pullets have reached ten weeks of age, you simply limit their feed to 80% of what they would consume on full feeding. The correct amount has been worked out by Purina Research, and it's easy to follow. Best of all, Purina Controlled Feeding Plan helps you grow pullets that lay more large eggs . . . fewer small ones and peewees.



Visit our store and let us explain this cost-cutting plan. Besides Purina Growing Chows, we also have a full line of Purina Health Aids, and, of course, our friendly service is always available.

Call us or drop in. Prove to yourself. Purina feeding costs you less.

10 years of Purina Research behind New Purina Early Weaning Chow

Purina Early Weaning Chow for baby pigs is a highly palatable, highly fortified, highly nutritious feed made for hogmen who plan to wean pigs at three weeks . . . or wish to wean pigs earlier. It may also be used in early weaning of late-larrowed litters, for orphan pigs or undersize pigs at normal weaning age.

IN SIX TESTS ON 616 PIGS, Early Weaning Chow-fed pigs gained as fast as pigs on sow's milk and creep feed from the 3rd to 6th week. They gained .77 lb. per pig daily — made 1 lb. gain from only 1.27 lbs. feed.

IN ON-THE-FARM TESTS, pigs followed the same pattern . . . weighed 23-33 lbs. at 6 weeks. Feed cost per pound of gain on good pigs, raised under good management, ranged from 12¢ to 14¢.



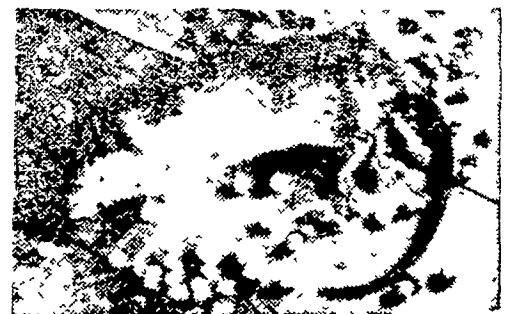
KILL RATS... Use Purina Rat-Kill

Purina Rat-Kill is an entirely different kind of killer for rats and mice. It's a "carry-home" bait. Rats haul it back to the nest . . . distribute it themselves . . . feed Rat-Kill to the whole family till they're dead.

Rat-Kill has these extra advantages:

- Highly palatable and bulky
- Kills fast in 5 to 15 days
- Low priced

See us for Purina Rat-Kill right away. We're at the Red and White Checkerboard Store in town.



Here's what happens to rats that eat Purina Rat-Kill. They're dead in 5 to 15 days. Rats love Rat-Kill. It's effective and economical, too.

John B. Kurtz
Cedar Lane

S. H. Hiestand & Co.
Salunga

John J. Hess
Kinzers - Vintage

Whiteside & Weicksel
Kirkwood

John B. Kurtz
Ephrata

J. H. Reitz & Son, Inc.
Lititz

John J. Hess, II
Int'l. course - New Providence

James High
Gordonville

Ira B. Landis
Valley Road - Lancaster

Wenger's Feed Mill, Inc.
Rheims

Warren Sickman
Pequea