

Farmers Invited To Exhibit Hay

Hershey, Pa. Who will be producing the best hay crop this year on the North American continent?

An answer to that question will be provided at the first National Grassland Field Days and Conference Aug. 15-17 at Hershey.

A North American Hay Show special feature on the three-day program is open to farmers from Panama to Alaska. The exhibitor of the best entry will be named hay grand champion of North America. With the award will go a special trophy.

Dr. John F. Baylor, forage crops specialist at the Pennsylvania State University and president of Pennsylvania Grassland Council, thinks Pennsylvania farmers have a good chance to take the top award. His confidence, he says, is based upon continued emphasis by county agents and agronomists at the University on quality forage and upon steady improvements by Pennsylvania farmers in their hay practices.

Also he is further supported by the fact that a Pennsylvania farmer now holds the grand championship of the hay show at the last Toronto Winter Royal Fair up to now the only international competition available to United States farmers. Winning this contest last November in competition with Canadian farmers was Rolling Rock Farm, Lakewood, of which Lester J. Ray is manager.

The Pennsylvania Grassland Council and the American Council are co-sponsoring the field days and conference.

PRIME YOUNG TREES

We Need 'Parus' Ayr and all sizes. Especially three farms close to Lancaster 6 to 10 miles out. Size not important. House should be in good condition. If you want to sell your farm now. Call Walter H. Ncikirk Realtor. Phone EN 3-5947.



Pa. 820 Corn

A high population variety

Yields up to 160 bu. per acre have been recorded

1. Stands up when others lodge
2. Withstands drought
3. Has a very strong stalk
4. Good resistance to corn leaf aphid and corn borers
5. Responds to thick planting and high fertilization
6. Low uniform height ears
7. Dries at harvest time than other varieties

REIST SEED COMPANY

MT. JOY
Ph. OF 3-3824

Chicago

(Continued from Page 2)

17 00-19 50 Good 1500-2000 lb. bulls 11 50-16 00
Good and Choice steers 26 00-33 00 Standard 21 00-25 00
Choice and Fancy 600-675 lb. feeding steers 27 00-27 10
Good and Choice 530-901 lbs 23 00-24 50 Medium and Good 600-700 lbs 9 00-21 00

Lancaster Poultry

(Continued from Page 3)

B. Risser, 16 2 20 Avron Shank, 6000 WV, 9-2 College Hill Poultry 15 5
21 Same 5000 WV 9-2 College Hill Poultry, 15 5
22 M&B (John O. Moyer, Jr.) 800 WVC 14-0 NO SALE 17 0 BID, 23 M&B (Same) 1100 WVP 14-0 NO SALE 17 0 BID 24 D F Horn & Co (Melvin Barge) 1400 WV 9-0 V F Weaver Inc 15 6 25 Horn & Co (Same) 3200 WV, 9-0 Daniel K Good, 15 4
26 Horn & Co (James Martin) 4000 WV 9-5 College Hill Poultry 15 6, 27 Horn & Co (Same), 4000 WV 9-5 College Hill Poultry 15 5 28 M&B (Kenneth Funk) 800 IRP 15-0 Roy E Reim 21 2 29 Earl S Stegert 1900 AAWV, 10-0 Island Poultry 15 6 30 Same 4300 AAWV, 10-0 Daniel K Good 15 5
31 John B. Kurtz (John S. Kurtz) 1300 L-F V J Koser Co Inc 10 6 32 M&B (Lowell Landis) 3000 WV, 7-6 Starr Poultry, 15 5 33 Amos Funk Bros Inc 5000 WV 9-0 W C Mellinger & Son 15 6 34 M&B (Wm D Strong) 3700 IR 8-3 Starr Poultry 15 4 35 Amos Funk Bros Inc, 3000 WV 9 Roy E Reim 15 5

Farm Calendar

(Continued from Page 1)

er 1051 Eden Road Lancaster
May 17 - 2 p.m. — Turkey marketing orders meeting in the farm show building, Harrisburg.
7:30 p.m. — Manheim Young Farmers Association meets at the Manheim Central High School. Subject to be Forage and Hay Programs.
May 19 — 4-H horse club leaders training session at Cal Hoovers stables, Weinersville.

SALE REGISTER

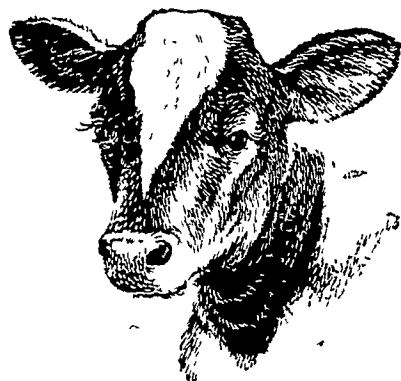
Sat., May 12, 4 miles west of Manheim Public Sale of household goods and also at the same time and place the Farm Equipment held over from our April 7 Sale. Contact us early we sell on commission C H WOLGEMUTH, R2, Manheim, Pa.

Sat., May 19, Household goods for Meuno Ober located 3 miles north of Manheim. Along Rt 72 Near Elstonville

Sat., May 26 — 11 a.m. - Pub Sale of full line of household goods and antiques. Lawn and garden equipment. Some farm equipment. For Mrs. Earl V. Hostetter along Rt 896 just east of Strasburg. Diller and Kleider Auctions

Sat. June 2 — 10 a.m. show tools - 2 p.m. - Real Estate carpenter tools. Estate of Joseph S. Wimer at 26 Funk St. Strasburg. Kleider and Diller Auctions

Sat., June 2 - 1 p.m. — Real Estate, Farm implements and personal property. By Victor Resline Estate at Wrightsville R1 near Craley. 41 acre farm, horse drawn equipment and household goods, Gilbert, Auction



A dairy calf takes about two years to develop into a milking cow and prove her worth as a producer. This means about two years or so of her owners' time, labor, feed, barn space, money and worry — and all this with the hope she will be a profitable producer.

But, a cow a calf will be. How well-nourished the calf is (together with her inheritance) will determine what kind of cow the calf will be.

Get a head start toward profits by feeding Red Rose Dairy Feeds to your young stock to produce strong animals that will mature quickly . . . and take their place in the milking line earlier.

Red Rose

DAIRY FEEDS

E. Musser Heisey
R. D. 2, Mount Joy, Pa.

Musser Farms, Inc.
R. D. 2, Columbia, Pa.

Joseph M. Good & Son
137 Newport Road, Leola, Pa.

Elverson Supply Co.
Elverson, Pa.

Musser's
The Buck
R. D. 1, Quarryville, Pa.

Leroy Geib Est.
R. D. 2, Manheim, Pa.



NEW HYBRIDS FROM P-A-G...

red for modern performance...top yields

Whether you feed, sell, or seal, you want modern, high-yielding hybrids! New hybrids from P-A-G are adapted to the needs of today's modern agriculture... assuring you of top yields and top corn profits. Here's why:

Uniform sizing means trouble-free planting... even stands.

Special fungicide coating protects against soil diseases.

Better insect and disease resistance keeps corn healthy.

Uniform ear placement and standability make picking easy.

High yields and high shellout lead to high corn profits.

Talk to your P-A-G dealer soon about NEW P-A-G hybrids... choose from P-A-G's complete line of modern hybrids.

Fred Frey, of Twin Oaks Farm, had the top yield in the Lancaster County 1961 Pa. Corn Club with 170.2 bushel produced with PAG SX19.

CONTACT

Your Local P-A-G Dealer For This and Other Dependable Hybrids That Meet Your Particular Soils, Conditions and Needs

Melvin M. Brendle
R. D. 1, East Earl
Terre Hill HI 5-2444

Willis H. Weaver
R. D. 1, Mount Joy
OL 3-4012

L. J. Denlinger Co.
Paradise
Intercourse SO 8-3031

Walter B. Martin
R. D. 1, Drumore
Hensel KI 8-2692

Willis Horst
R. D. 1, Lutz
MA 6-6755

Cloyd Wenger
R. D. 7, Lancaster
PA 3-1633

David B. King
Box 2471
Horseshoe Rd., Lancaster

Eugene Spotts
R. D. 2, Honeybrook
BR 3-3956

Mountville Feed Service
R. D. 2, Columbia
Mountville VT 5-2664

Harry J. Daugherty
R. D. 1, Kirkwood
LA 9-2330

Eli O. Nolt
R. D. 1, New Holland
LL 4-9222

Fred Frey
R. D. 2, Quarryville
ST 6-2235

Paul G. Nolt
R. D. 1, Manheim
665-4224

Ross C. Ulrich, Jr.
R. D. 2, Peach Bottom
Hensel KI 8-2488

Edgar S. Porter
R. D. 1, Washington Boro
Millersville TR 2-7158

Charles Ranck
Box 237, Rose Ave.
Leola, Pa.
OL 6-6151

Richard Shuman
2515 Chestnut Ridge Dr.
Lancaster
EX 3-0852



THE MOST FAMOUS NAME IN CORN

— LOCAL OFFICE —

Pfister Associated Growers

R. D. 3, Lancaster Ph. TW 8-7121