

## Farm Women 4 Sewing Club To Take Tour Elects Grube As President

Mrs. Robert Heri, president of Society of Farm Women number four announced there are still a few seats available on the bus tour scheduled by the society.

Plans for the two day trip to New York on May 19-20 were completed at a recent meeting of the group in the home of Mrs. John Musser, Manheim R1. The group has sponsored trips before and opened them to the public, but this is the first overnight trip.

Mrs. Heri suggested that anyone desiring to go on the trip should contact Mrs. Willis Reapsome, Landisville.

A donation of \$25 was voted to the Agriculture Center.

Harry Hovis, scientist and businessman spoke on the making of perfumes and gave each person present a small sample bottle.

Carol Eshelman daughter of Mr. and Mrs. B. Frank Eshelman, Manheim R1 played piano numbers.

### Eat Breakfast

The homemaker who is too busy to eat breakfast pays for it during the morning and even later in the day, reminds Mrs. Ruth J. Mozzi, Penn State extension foods and nutrition specialist. She pays with a let-down in a feeling of well-being, often responsible for nervousness, anger, and a lack of patience with everyday problems. But the woman who manages a good breakfast for herself and family can face the day with confidence.

Margaret Grube was elected president of the Flying Fingers I-H Club at the organization meeting held May 1 in the home of Mrs. Willis Bucher, Lititz R2.

Other officers elected were vice president, Jean Slaughter; secretary-treasurer, Judy Buckwalter; news reporter, Mary Alice Graybill; song leader, Nancy Peiter; game leaders, Lois Bomberger and Janice Bomberger.

Lois Bomberger will represent the club at the county council meeting. The Junior leaders are Cynthia Bucher, Lois Bomberger and Mary Alice Graybill.

Mrs. Willis Bucher and Miss Priscilla Bucher are the adult leaders.

The girls made plans to hold a bake sale at Roots Farm Auction on May 15. The purpose of this auction is to raise money for the purchase of a sewing machine for use in the club.

Plans were also made to attend the Spring Jamboree which will be held at the East Petersburg Elementary School on Saturday evening, May 5.

A total of twenty-one girls attended the meeting. Refreshments were served by the adult leaders. The next meeting will be held May 14 at 7 p.m. in the home of Mrs. Bucher.

Do your future a favor — buy and hold United States Savings Bonds. And while you're about it, buy that EXTRA bond for freedom during the Freedom Bond Drive.

## CHECKERBOARD

# Service Bulletin

## How to Save \$15 or \$20 per Hundred Pullets

Do you know that you may save as much as \$15 or \$20 on every hundred pullets you raise this year? You do it by following the Purina Controlled Pullet Growing Plan.

After pullets have reached ten weeks of age, you simply limit their feed to 80% of what they would consume on full feeding. The correct amount has been worked out by Purina Research, and it's easy to follow. Best of all, Purina Controlled Feeding Plan helps you grow pullets that lay more large eggs . . . fewer small ones and peewees.



Visit our store and let us explain this cost-cutting plan. Besides Purina Growing Chows, we also have a full line of Purina Health Aids, and, of course, our friendly service is always available.

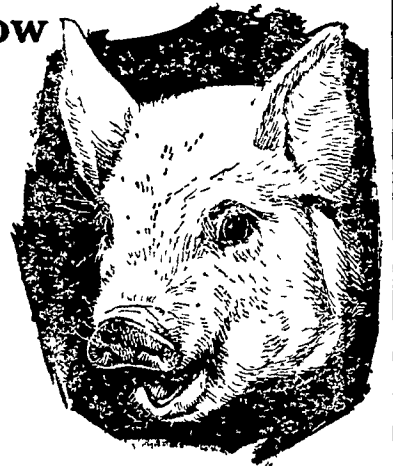
Call us or drop in. Prove to yourself. Purina feeding costs you less.

## 10 years of Purina Research behind New Purina Early Weaning Chow

Purina Early Weaning Chow for baby pigs is a highly palatable, highly fortified, highly nutritious feed made for hogmen who plan to wean pigs at three weeks . . . or wish to wean pigs earlier. It may also be used in early weaning of late-farrowed litters, for orphan pigs or undersize pigs at normal weaning age.

**IN SIX TESTS ON 616 PIGS.** Early Weaning Chow-fed pigs gained as fast as pigs on sow's milk and creep feed from the 3rd to 6th week. They gained .77 lb. per pig daily — made 1 lb. gain from only 1.27 lbs. feed.

**IN ON-THE-FARM TESTS,** pigs followed the same pattern . . . weighed 23-33 lbs. at 6 weeks. Feed cost per pound of gain on good pigs, raised under good management, ranged from 12c to 14c.



## ONE SOURCE



for all your plant food and pesticide needs

Now Swift brings you a full line of highest quality plant foods, pesticides and weed killers . . . all tailored to fit your individual needs. And to help you use these production tools in the most profitable way, Swift's representatives and dealers provide the technical assistance you may want . . . a free service from Swift.



### Shooting For Higher Corn Yields?

Use BRIMM . . . the plant food with extra essential growth elements . . . for weed control, use Gold Bear 10. Ask us.

**WALTER BINKLEY & SONS**  
Lititz, Pennsylvania

**Grubb Supply Company**  
Elizabethtown, Pennsylvania

Swift & Company • AgriChem Div. • Baltimore, Md.

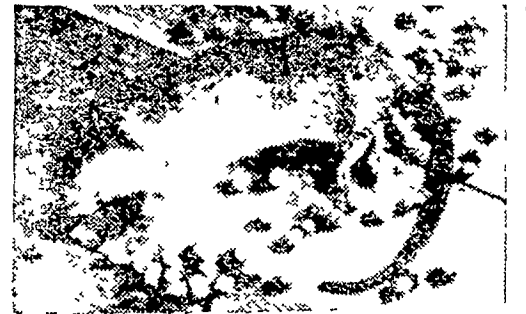
## KILL RATS... Use Purina Rat-Kill

Purina Rat-Kill is an entirely different kind of killer for rats and mice. It's a "carry-home" bait. Rats haul it back to the nest . . . distribute it themselves . . . feed Rat-Kill to the whole family till they're dead.

Rat-Kill has these extra advantages:

- Highly palatable and bulky
- Kills fast in 5 to 15 days
- Low priced

See us for Purina Rat-Kill right away. We're at the Red and White Checkerboard Store in town.



Here's what happens to rats that eat Purina Rat-Kill. They're dead in 5 to 15 days. Rats love Rat-Kill. It's effective and economical, too.

- |   |  |  |
|---|--|--|
| <b>John B. Kurtz</b><br>Cedar Lane                      | <b>S. H. Hiestand &amp; Co.</b><br>Salunga | <b>John J. Hess</b><br>Kinzers - Village       |
| <b>Whiteside &amp; Weicksel</b><br>Kirkwood             | <b>John B. Kurtz</b><br>Ephrata            | <b>J. H. Reitz &amp; Son, Inc.</b><br>Lititz   |
| <b>John J. Hess, II</b><br>Intercourse - New Providence | <b>James High</b><br>Gordonville           | <b>Ira B. Landis</b><br>Valley Road, Lancaster |
| <b>Wenger's Feed Mill, Inc.</b><br>Rheems               |  | <b>Warren Sickman</b><br>Pequea                |