

**● Farm Wife**

(Continued from Page 15)

ture. Cook about 15 minutes longer, stirring occasionally Season to taste 6 servings

Serve a meal in a bowl with a hearty Veal Soup Crisp saltine crackers go well with this soup

**VEAL SOUP**

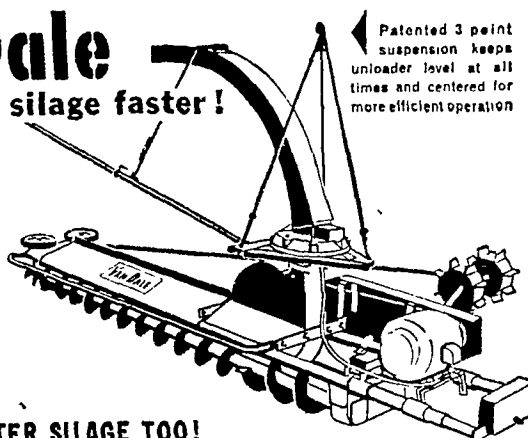
- 2 tablespoons butter or margarine
  - 2 pounds boned veal cut in 1-inch cubes
  - 1 teaspoon monosodium glutamate
  - 2 beef bouillon cubes
  - 1 quart boiling water
  - 1 large onion, sliced
  - 1 teaspoon salt
  - 1/4 teaspoon pepper
  - 1 tablespoon paprika
  - 2 cups sliced carrots
  - 4-ounce can sliced mushrooms
- Melt butter or margarine

add veal & monosodium glutamate Saute until brown. Dissolve bouillon cubes in boiling water, add to veal, along with onions, salt, pepper and paprika **SIMMER** covered 45 minutes Add carrots and mushrooms with liquid **SIMMER** until carrots are tender Keep hot until serving time Makes 6 to 8 servings

**BRUNSWICK STEW**

**Get the BIG silo unloader value!**

**VanDale**  
Delivers more silage faster!



● Double auger system digs the silage faster and more evenly under all conditions whether silage is frozen, wet, or dry.  
● Exclusive, adjustable drive hub gives more positive traction, keeps the machine operating evenly, and requires less power.

**DELIVERS BETTER SILAGE TOO!**

The double augers, operating in conjunction with the patented V-paddle impellers, digs the silage, mixes it thoroughly, and then throws it down the chute. Your cows and cattle get good, palatable silage... not a powdered mash as so often happens with unloaders using blowers.

**TWO SIZES:**

Standard—for silos 10' to 16'  
Heavy Duty—for silos 12' to 30'

**CALEB M. WENGER**

R. D. 1 QUARRYVILLE, PA  
Drumore Center KI 8-2116

**WRITE OR PHONE US FOR COMPLETE INFORMATION AND PRICES.**



**Pa. 820 Corn**

A high population variety

Yields up to 160 bu. per acre have been recorded.

1. Stands up when others lodge
2. Withstands drought
3. Has a very strong stalk
4. Good resistance to corn leaf aphid and corn borers
5. Responds to thick planting and high fertilization
6. Low uniform height ears
7. Drier at harvest time than other varieties.

**REIST SEED COMPANY**

MT. JOY  
Ph. OL 3-3821

**Community Sale**

CRALEY, PA.

Farm machinery, Personal Property, Household goods, Pigs, Tools, etc.

Sat., May 12, 1962  
at 9:30 A.M.

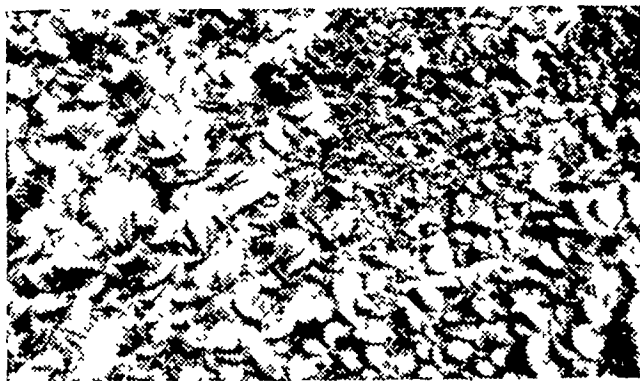
This will be an all day sale consisting of tractor and horse drawn machinery of all kinds and personal property of all types.

Come see what we have. Two auctioneers. Refreshments available.

Craley, Pa. is approximately 6 mi. south of Wrightsville.

Not responsible for accidents on day of sale. If you want anything sold contact auct.

Jacob A Gilbert,  
R1, Wrightsville, Pa.  
Auctioneer and Manager



Vigorous tobacco plants at left got 1/2 lb of AGRINITE TOBACCO BED TOPDRESSER per sq. yd., those at right were not topdressed.

**Easy Way to Grow Sturdy Tobacco Plants**

HERE'S an easy way to get sturdy, well-rooted tobacco plants. When the leaves are the size of a dime, start topdressing with AGRINITE TOBACCO BED TOPDRESSER—the all-organic nitrogen plant food. Apply 50 lbs. of AGRINITE per 100 sq. yds. of bed (1/2 lb. per sq. yd.). Gradual release of nitrogen in AGRINITE promotes continuous, hardy growth of both roots and tops, keeps smaller plants coming along nicely as larger ones are pulled. Topdressed



plants are more vigorous, have a healthy green color. And they're better able to withstand transplanting because they have stronger root systems. AGRINITE won't burn delicate plant tissues, doesn't have to be washed off the leaves. AGRINITE is available wherever AGRICO® fertilizers are sold.

**AGRINITE. Tobacco Bed Topdresser**

THE AMERICAN AGRICULTURAL CHEMICAL COMPANY

Contact Your AGRICO Agent or AGRICO Warehouse at Lancaster R. D. 3 — LO 9-2361 or Narvon R. D. 2 or

Call Sales Representative

**B. G. HOFFMAN**  
Elizabethtown EM 7-1650

**Stew with Veal**

- 4 slices bacon, cut into 1 inch pieces
- 2 cups diced raw potatoes
- 10 ounce package frozen lima beans
- 1 pound can tomatoes
- 1 medium onion, peeled and sliced
- 2 teaspoons salt
- 1/2 teaspoon black pepper
- 1-1/2 teaspoons Worcestershire sauce
- 10-ounce package frozen whole kernel corn

Cut chicken into serving pieces Place in a large, heavy kettle Cover with water and cook until tender Remove chicken from broth. Cool and remove meat from bones Cut in bite-sized pieces Measure broth and, if necessary, add enough water to make 1 quart Pan-fry bacon until crisp In a large saucepan or kettle combine broth, bacon, bacon drippings, chicken, and remaining ingredients with the exception of the corn Simmer over low heat about 1 hour Stir occasionally Add corn and simmer for 30 minutes

- 1 soup can milk
  - 2 tablespoons chopped onion
  - 1 tablespoon butter or margarine
  - 1/2 teaspoon paprika
  - 1/8 teaspoon cayenne pepper
  - 1/8 teaspoon nutmeg
  - 1 cup cottage cheese
  - 2 tablespoons chopped pimiento
- Combine soup and butter Heat Saute onion in butter 2 minutes Add to soup Add remaining ingredients and simmer but do not boil Makes 4 servings Serve with crackers

**Stanley H. Deiter**

Auctioneer & Appraiser

**LAMPETLR**

Ph. Lancaster 1 N 1379

A savory blend that just dares you to be different is Cottage Cheese Soup

**COTTAGE CHEESE SOUP**

- 1 10-1/2 ounce can condensed cream of celery soup

**WELDING**

Done on your farm or place of business  
Arc or Acetylene  
12 years experience

**Harold K. Showalter**

R. D. 1, Conestoga  
Ph. Millersville TR 2-2678

When planning to buy or sell call

**HENRY E. SHREINER**

AUCTIONEER

And Real Estate Salesman

Dial: MA 6-6190 Int'l. B. EX 7-3574

**232nd GARDEN SPOT SALE**

THURSDAY, MAY 10 — LANCASTER, PENNA

At the J. M. Brubaker Farm located near Willow Street 1/2 mile, 4 miles south of Lancaster, Pa. Just off Rtes. 72 and 222. Watch for sign on Rte. 72.

**75 REGISTERED HOLSTEINS**

(Many fresh or close - Good number of heifers bred for fall Open Heifers and Calves - Bulls)  
Bang's Certified, T. B. Accredited, nearly all call. vaccinated and eligible to ship anywhere.

**GOOD EARLY CONSIGNMENTS INCLUDE THESE FEATURES!**

- A 517-lb. 4 yr.-old daughters of Hays Inspiration due sale time to Pabst Comet Prilly Wayne. Also good pair of heifer calves by Shaws Fern Tidy Lass and Pabst Comet Prilly Wayne from good record dams.
  - A line-bred Winterthur cow with 646 fat and 16,710 Milk, 5 yrs., 2v, 3.9% and due sale time to a top bull.
  - A son of Lyon Brook Wallie Queen from dam with 702 fat and 17,497 Milk ready for heavy service.
  - A daughter of Maplebend Dean King Posch due sale time to Cochran General Plus two daughters of Skokro Creative Mister.
  - A Harden Farms Duke Eden daughter due sale time third call at sale time.
  - A Pabst Cyclone Coburke Star due with first call to Gray View Skyliner son at sale time.
- MANY MORE THAT WILL PLEASE YOU ● PLAN TO BUY AT GARDEN SPOT SALE ON MAY 10th!**

Sale starts 12 Noon Lunch Available Catalogue  
R. AUSTIN BACKUS, INC. EARL L. GROFF  
Sale Mgrs. & Auctioneers, Local Rep  
Mexico, N. Y. Strasburg, Pa.

**TODD**



**The Winner**  
Records Prove

- Tops in County Tests
- Tops in Farm Performance

**Make Your Acres Pay PLANT**

The Proven-Profitable Hybrid

**TODD**

MERVIN McMICHAEL  
R. D. 6, LANCASTER, PA.

JACK ROBINSON  
BIRD-IN-HAND, PA.

WILLIAM DEAN  
R. D. 1, STRASBURG, PA.

HAROLD M. GEHMAN  
R. D. 3, LANCASTER, PA.

E. H. KEEN & SON  
PARKSBURG, PA.

ARLINGTON MILLER  
ELM, PA.

RALPH HERTZLER  
R. D. 2, ELVERSON, PA.

NOLT BROS.  
R. D. 2, PEACH BOTTOM