

● **Hog House**

(Continued from Page 6)

at the present time is finding a sufficient supply of healthy feeder pigs, but Beam is working on solving that problem. Another son Ormar has a herd of sows and gilts which will furnish nearly half enough pigs for the operation, and Beam is working on a contract with another farmer to furnish the rest of the required feeders. But until these two operations get into full production, Beam is looking for feeder pigs wherever he can find them.

He hopes to move the pigs into the pens at about 30 pounds and move them through a succession of pens to the other end of the house until marketing at about 200 pounds.

The pens, approximately 7x20' are designed to hold 20 market-weight hogs.

When the pigs go into the pens at the North end of the building, they will be put on a starter feed, but as they grow, the ration will be changed to a growing feed. There are two separate bulk bins located over the roof at the ends of the building. Twelve of the 24 pens are fed from each bin. For this reason, the pigs are transferred from one pen to another as they gain weight.

Self feeders in each pen are kept filled by two automatic feeders which carry the feed by chain to plastic tubes over

each self feeder.

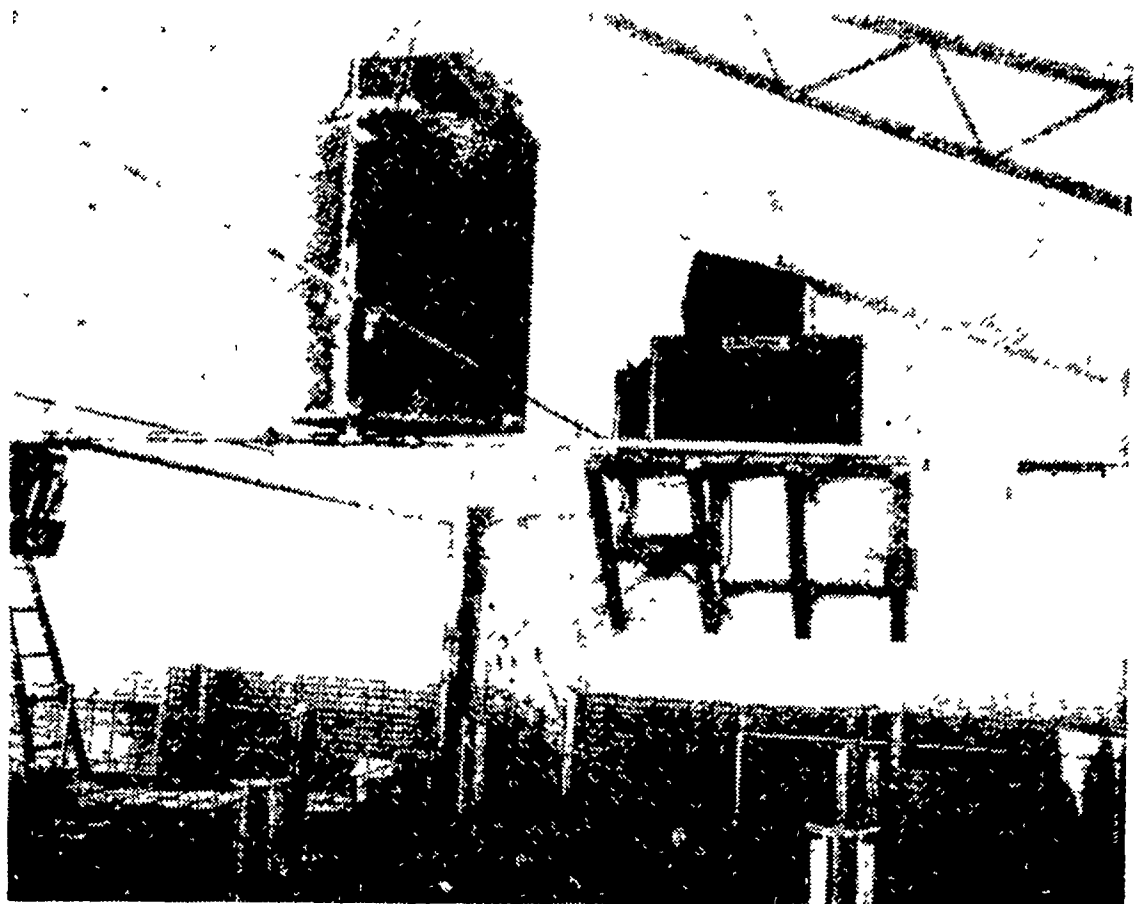
Water, under pressure, supplies drinking bowls in each pen, but four units of six pens each can be put on medicated water at any time through a series of valves in the lines. Water in a 500 gallon tank hanging from the rafters can be medicated and piped into the regular drinking bowls whenever necessary.

Twelve fans, six on each side of the building, keep both temperature and humidity under control in the house. Automatic controls sensitive to both temperature and humidity, turn the fans to pull in fresh air or expel stale air as needed.

Insulation on the side walls and ceiling will help keep the building cool in summer and warm in winter. "We were in one house in Indiana when the temperature outside was zero," Beam said, "and inside the house it was 45."

Beam realizes that disease control is going to be one of his big problems. With this in mind he asks visitors to stop at the door and disinfect their shoes before entering. The pigs themselves are injected for cholera before entering a feeding space in the house.

With a set-up as new as this, there are questions still to be answered, but when you talk with William Beam, you soon realize he will find the answers — if he doesn't have them already.



THE WATER SUPPLY IN ANY SIX OF THE 24 pens in the hog feeding house can be medicated through the use of the overhead tank shown here. On the wall to the right of the water tank is the hopper for the automatic feeder. Chains carry the feed from the hopper to the plastic tube, at the extreme right edge of the picture, and into the self feeders. Feed is fed into the hopper by gravity from an overhead bulk bin outside the building. The pan of disinfectant just inside the door is part of a rigorous disease control program.

L. F. Photo.

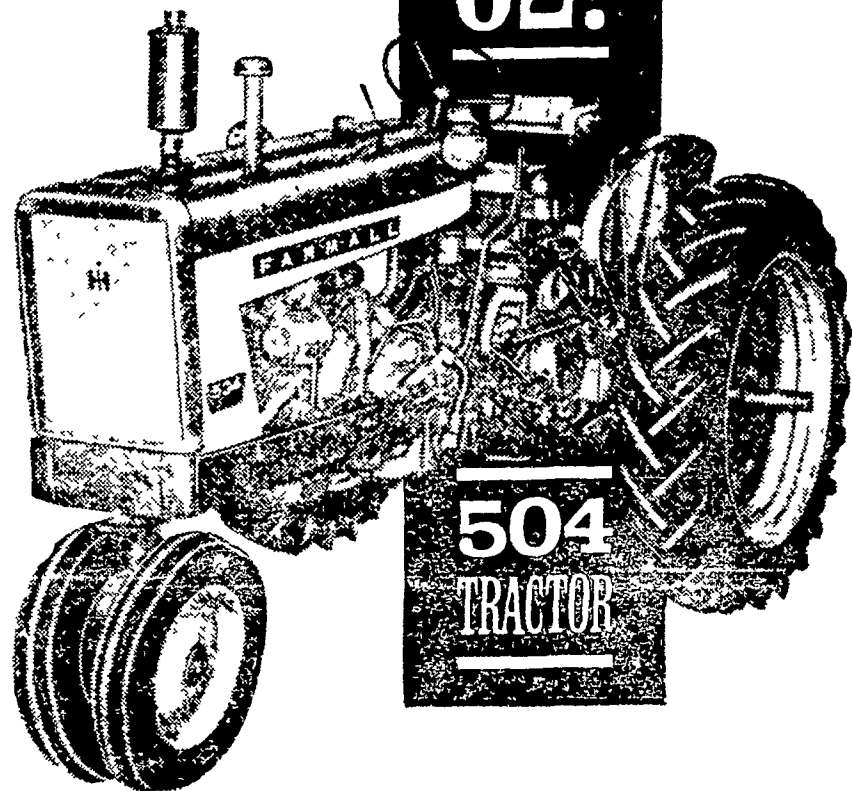
Need Power to Plow This Spring?

YOU'LL PLOW WITHOUT SHIFTING OR STALLING

WITH A NEW FARMALL 404 OR 504



- NEW 3-point draft-controlled hitch
- NEW versatile, fast-acting hydraulic system
- NEW dual-range transmission - 8 speeds forward, 2 reverse



- NEW 45 H. P. MODEL
- NEW 3-point draft-controlled hitch automatically keeps implements where you set them
- NEW heavy-duty construction.
- NEW gas and diesel engines.



C. B. Hooper
INTERCOURSE
SO 8-3501

David Kurtz
MORGANTOWN
AT 6-3771

C. E. Wiley & Son
QUAKERTOWN - WAKARUSA
SF 6-2895

Kauffman Bros.
MOUNTAINEER
AT 5-9151

Cope & Weaver Co.
WILLOW STREET
EX 3-2824

J. Paul Nolt
GAP
HI 2-4183

J. B. Hostetter & Sons
MOUNT JOY
OL 3-3721

International Harvester
Sales and Service
EPHRATA
RE 3-2283