

SALE REGISTER

Sat. Apr. 21 - 10:30 a.m. — Dwelling, house and household goods. By Mrs. Pearl Gleason along road from Quarryville to Buck just W. of Quarryville Boro line. Kreider and Diller Aucts.

Saturday April 28, 1962 12:30 P.M. Public Sale of 120 New and Used Power Lawn Mowers and Chain Saws on the premises located 3 miles Southwest of Lancaster in the Village of New Danville by the Mast Company. Henry Shreiner Auct.

Sat. Apr. 28 - 1 p.m. Sale of household goods, pig and light farm equipment. By Samuel D. Kinsey along Rt. 222 at Hessdale 10 mi. S. of

Lancaster Kreider and Diller Aucts.

Sat., Apr. 28 - 9 a.m. — Sale of 8 farms 960 acres ranging 60 to 275 acres. Real Estate at 10 a.m. - 125 registered and grade Guernseys full line of equipment. By Carter Bache owner of Maywood farms in Columbia County 15 Mi. N. of Bloomsburg 3 Mi. SE of Benton 2 Mi. E. of Stillwater. Sanger Auct.

Sat., May 12, 4 miles west of Manheim Public Sale of household goods and also at the same time and place the Farm Equipment held over from our April 7 Sale. Contact us early we sell on commission. C. H. WOLGEMUTH R2 Manheim Pa.

Sat., May 19, Household goods for Menno Ober located 3 (Continued on Page 23)

FREE Badger Barn Cleaner Conversion to the Farmer With the Oldest Barn Cleaner - Regardless of Make

REGISTER TODAY

Win a Badger Barn Cleaner Conversion Kit By Having The Oldest Barn Cleaner!

Clip this coupon and take it to your BADGER DEALER

Badger Barn Cleaner Registration

Name _____

Address _____

Make of Barn Cleaner _____

Age of Barn Cleaner _____

Barn Cleaner must be presently in use

Grumelli Farm Service
R. D. #1 - Quarryville

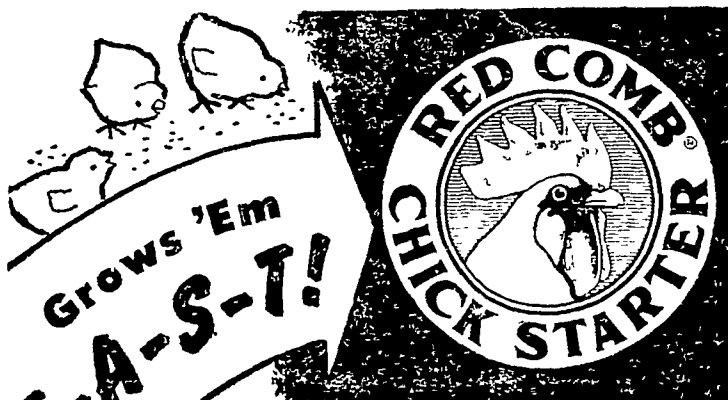
R. M. Brubaker
Salunga

Jacob F. Beiler
R. D. #1 - Kinzels

Farmersville Eqpt.
Company, Inc.

Raymond Gehman
Bowmansville

R. D. #2 - Ephrata



- Starts Chicks Right
- Produces Strong, Vigorous Birds
- Houses Economical Pullets

Get your chicks off to a fast start and sturdy growth that means more profits later by feeding RED COMB CHICK STARTER. Highly palatable, nutritionally correct and uniform in quality, RED COMB CHICK STARTER is your best buy for Quality Results at Low Cost.

Medicated
For Your
Added
Protection

Come In and See Us
Next Time You're In Town

Joseph M. Good & Sons

LEOLA — QUARRYVILLE

ALL DAY PUBLIC SALE

In COLUMBIA COUNTY, 15 Miles North of Bloomsburg, 3 Miles Southeast of Benton, 2 Miles East of Stillwater, Penna. Follow Sale Arrows

SATURDAY, APRIL 28, 1962 — 9:00 A.M.

LUNCH ON THE GROUNDS

8 Farms, Totalling 906 Acres

will be offered Individually and as 4 Farm Units

UNIT No. 1 - 3 Farms Total 250 ACRES — Mostly level tillable land. Fertile Soil. 3 FRAME HOUSES, LARGE BANK BARN with wing attached, 14 x 36 Concrete Stave SILO Another Bank Barn, Lot of Turkey Buildings, 2-Story Chicken House. 2 Streams, Large Farm Pond. Houses are in excellent condition and have all conveniences.

UNIT No. 2 - 2 Farms Totalling 247 ACRES — EQUIPPED FOR DAIRY. Large Brick and Tile DAIRY BARN with 60 Comfort Stalls and Box Stalls, 3 Large SILOS, also Large MILK HOUSE. Heated Calf Barn Maternity Barn, Etc. 3 HOUSES — All Conveniences 2 Small Streams. Also Hay Barn, Corn Cribs This Farm adjoins Farm No. 1.

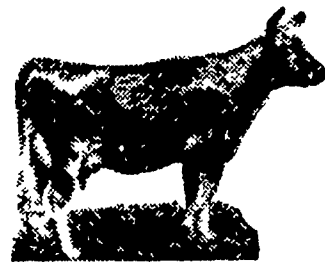
UNIT No. 3 - 2 Farms Totalling 134 ACRES — EQUIPPED FOR POULTRY. Will handle 10,000 Layers and 20,000 Broilers 3 Houses, Orchard, etc.

UNIT No. 4 - 275 ACRES — FRAME HOUSE and HAY BARN . . . Mostly tillable land. A Real Grain Farm . . . Number 4 is about 2 miles from the other units.

TERMS — 10% Down Sale Day Immediate possession can be had upon payment of an additional 10%. Final settlement April 1, 1963. These are good farms, but will sell at your own price as they are selling out of season. Must be sold due to owner's health. FARMS SELL AT 10:00 A.M. ALSO SELLING IS —



125



Registered & Grade Certified Bloodtested, Vaccinated & TB Accredited

GUERNSEYS —

This is one of Pennsylvania's highest producing herds to be sold anywhere this year. The herd is headed by an outstanding WYNO BELLE BUTTERFAT BULL, his Dam Clearhearts Dainty (A.G.) has many real records, one of 16,916 Milk, 929 lbs. Fat in 305 Days. The Junior Heifer Sire is from a Cow with 20,138 Milk, 948 lbs. Fat.

54 COWS — 28 BRED HEIFERS

41 OPEN HEIFERS and CALVES — 2 BULLS

Cows selling with many high records. Herd is on H.I.R. testing. A group of Very Outstanding Bred Heifers. This herd will suit the most discriminating breeder and will add life to any herd. Unusual large size, beautiful udders, excellent producers. All sell regardless of price. Also selling is ALL MODERN FARM EQUIPMENT and TOOLS

Farmall 400 — 350 Diesel and 3 Farmall M Tractors

One is Super M, all fully equipped 4-Row Cultivator, 4-Row Corn Planter, 3-Bottom Trip Back Plow, 4-Bottom Rubber-Tired Pull-Type McCormick Hydraulic Plow, 2 McCormick No. 40 P.T.O. Spreaders, one mounted on a truck.

Hay Crimper — 55 T Baler — Large Elevator

36 foot Kings Wise Bale Elevator, New J. D. Crimper, Stalk Cutter, 2 - 16 Hoe Grain Drills, 5-Bar McCormick Pull-Type Hay Bale on rubber, 2 - 3-Section Spring Tooth Harrows, Cultivator, 7 foot Fast-Hitch McCormick Mower, Small Grain Elevator, McCormick Corn Harvester

12 ft. Combine — New 2 MH Mounted Picker

McCormick Self-Propelled Combine with Grain Tank, Cornpicker is late Grease Well type, 1 Ton Kelley Duplex Feed Mixer, New John Deere Hammer Mill, 3 Silage Wagons with false end gates, Grove Self Unloading Unit, Manure Loader for a Farmall M, Steam Cleaner, McCormick Lime and Fertilizer Broadcaster.

No. 5 McCormick Flail Chopper

Shop Tools, Turkey Equipment, 100 DUCKS, 12-Gal Milk Cooler, Lot of Milk Cans, 4-Unit Surge Milker, 4 Stainless Steel Units, 20 feet of Silage, and many other articles.

COME EARLY! Plenty of Lunch from portable restaurant. Cattle will be sold in large tent. You are invited to see the Farms and Cattle any time between now and sale by calling Paul E. Sanger, Auctioneer, Phone 784-3200, Bloomsburg. Sale Hdqts. Magee Hotel Bloomsburg

SALE WILL START AT 9:00 A.M. SHARP. SMALL TOOLS First, REAL ESTATE at 10:00 A.M.; EQUIPMENT 10:30, CATTLE at 1:30 P.M. Remember, everything sells regardless of price as this is a COMPLETE DISPERSAL SALE due to the owner's Health.

— — — — Sale Managed by the — — — —

SANGER LAND AND CATTLE NATIONWIDE AUCTION CO.

Paul E. Sanger, Manager & Pedigrees — Ph. UN 64725, Myerstown or Bloomsburg 784-3200

AUCTIONEERS — Paul E. Sanger, Arthur Comer, D. H. Ramsey, Leroy Sensenig, and Clyde Wolgemuth

SALE CLERKS — Ruth Sanger, Charles Sanger, Dorothy Smith, Ruth Ramsey, Grace and Lydia Sanger

MAYWOOD FARMS

CARTER BACHE, JR., Manager

CARTER BACHE, Owner