

## Penna. Has Many Local Fairs

HARRISBURG — A steady parade of county and community fairs will start in late July and continue through mid-October, rewarding farmers with prizes and giving tourists a peek at Pennsylvania's agricultural achievements. The State Department of Agriculture's annual listing of

fairs shows that 81 events will start July 23 with the Butler Fair at Prospect and the Shipensburg Community Fair. Windup of the season will be the Dillsburg Community Fair and the Lower Mahanoy Community Fair, Dalmatia, Oct. 18-20.

New among the agricultural expositions in 1962 will be the first annual National Grasslands Field Days at Hershey, Aug. 15-17. Combined with the

exhibits and program will be the annual State Plowing Contest on Aug. 17.

In addition to some of the livestock, crop and home economics exhibits, farm youth demonstrations will get "try-outs" during the county fair season before entry in the annual Pennsylvania Farm Show in Harrisburg Jan. 7-11, 1963. City dwellers and out-of-staters are expected to flock in again to the festivals of

"moos, maize and midways" 9, at the Farm Show Building, Harrisburg. Adams County Apple Blossom Tour, Biglerville, May 6. Sertoma Barbecue Longs Park, Lancaster, May 19. Poultry Federation Field Days and Barbecue Hershey, Aug. 22-26. Grape Festival, North East, Sept. 20-22, and the Adams County Apple Harvest Holiday in mid-October.

Most of the fairs are scheduled to last at least three days, thus meeting one requirement of the Department's program to encourage agricultural exhibits by splitting a special appropriation of \$55,000 among the qualifying fairs. Top reimbursement to an individual fair is limited by statute to \$1,000.

In addition to local events and the Farm Show, major farm events include the Pennsylvania Junior Dairy Show, Sept. 19, and the Pennsylvania Livestock Exposition, Nov. 5-

To avoid monotony in cooking food specialists at the state university suggest planning menus for a week, ten days or even a month at a time. Then left-overs become planned overs and can be worked in without offending the family.

CHECKERBOARD

# service bulletin

## NEW PURINA 2-WAY CHICK HEALTH PLAN



1. Purina Chick Startena for vigor
2. Purina Tylan to knock out CRD

For the first time you can help get your baby chicks off to a fast, healthy start with this low-cost, easy-to-follow Purina Chick Health Plan.

Chicks need the ten growth-boosting ingredients in Chick Startena to help give them a profitable start. New Purina Tylan Soluble contains tylosin, the first really effective antibiotic that fights CRD organisms present in a baby chick's system.

### SAVE 25c ON EVERY 60 CHICKS YOU START!

When you buy Chick Startena, you can get a regular 60-chick packet of Purina Tylan Soluble — worth \$1 — for only 75c. That's a saving of 25c on every 60 birds you start.

Pick up as many packets of Tylan Soluble as you need at our Checkerboard Store when you order Chick Startena. But be sure to get both, and reduce the danger of early CRD losses for less than 1 1/4c per chick.

John B. Kurtz  
Cedar Lane

S. H. Hiestand & Co.  
Salunga

John J. Hess  
Kinzers - Vintage

Whiteside & Weicksel  
Kirkwood

J. H. Reitz & Son, Inc.  
Lititz

John J. Hess, II  
Intercourse - New Providence

John B. Kurtz  
Ephrata

Ira B. Landis  
Valley Road - Lancaster

Wenger's Feed Mill, Inc.  
Rheems

James High  
Gordonville

Warren Sickman  
Pequea

### NITROGEN

### SERVICE



WE WILL TOP DRESS YOUR

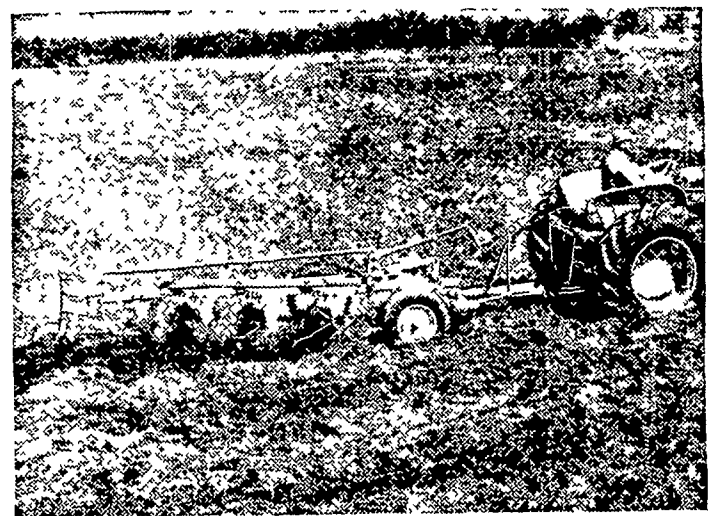
- Pasture
- Small Grain
- Grass, Hay & Forage

WITH: UREA—Ammonium Nitrate or Cyanamid  
ALSO—BROADCAST to Plow Down For Corn  
EXpress 2-4963

## ORGANIC PLANT FOOD CO.

GROFFTOWN RD. Next to the Waterworks

## Match Implements to Tractor Capacity



Don't "baby" a D-Series Tractor when it comes to plowing — they're built to handle their rated number of bottoms.

- D-19 five 16's or 80 inches
- D-17 four 14's or 56 inches
- D-15 three 14's or 42 inches
- D-10, D-12 two 14's or 28 inches

You can count on high-speed plowing because TRACTION BOOSTER system reduces wheel spillage.

Trash flows freely — less plugging — more plowing.

Don't handicap your power with old implements. See the Allis-Chalmers 60, 70, and 80-Series plows.

TRACTION BOOSTER is an Allis-Chalmers trademark.

*Finance for profit. Ask us about Allis-Chalmers' time payment plans.*

**ALLIS-CHALMERS**   
SALES & SERVICE

N. G. Myers & Son  
Rheems, Pa.

L. H. Brubaker  
Lititz, Pa.

Nissley Farm Service  
Washington Boro, Pa.

Grumelli Farm Serv.  
Quarryville, Pa.

L. H. Brubaker  
Lancaster, Pa.

Snavely's Farm Service  
New Holland, Pa.