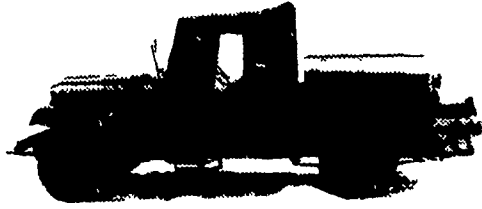


● Weed Differences from shades of purple to pale blue and white. There may be 300,000 to 700,000 seeds per pound. Flower color may vary.

NITROGEN SERVICE



WE WILL TOP DRESS YOUR

- Pasture
- Small Grain
- Grass, Hay & Forage

WITH: UREA—Ammonium Nitrate or Cyanamid
ALSO—BROADCAST to Plow Down For Corn
Express 2-4963

ORGANIC PLANT FOOD CO.
GROFFTOWN RD. Next to the Waterworks

In the Montana studies, spring emergence of annual shoot growth was consistently early in 2 of the 10 groups and late in 2 of the groups. The plants that had the earliest shoot emergence also had the earliest formation of buds and flowers. This characteristic can influence the weed's competitiveness with a crop. An earlier emerging type would get an earlier start in competing with a spring wheat crop and cause greater losses than a late emerging type. Hodgson believes.

The teeth of sharks are so sharp that they can be used for shaving.

Grange Appoints Interim Master

The Pennsylvania State Grange announced today that Thomas S. Gardner, Millville, has been appointed Acting Master of the Grange, to serve until May 15.

Gardner was appointed to replace J. Collins McSparran, who took a leave of absence from the post to campaign for the Republican gubernatorial nomination.

The new Master, a native of Pine Twp., Millville, has been a dairy farmer in Millville for the past 41 years.

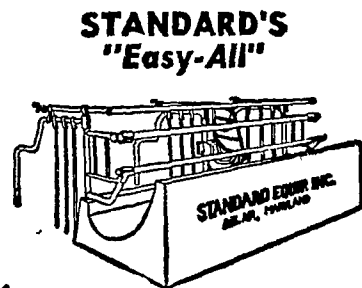
He had 10 years of service as Deputy State Master before assuming his seat on the Executive Committee.

Prior to that, he served as Master of Valley Grange No. 52, of which he and his wife have been members for the last 19 years. He also served as Master of Pomona Grange No. 7 for seven years.

Gardner, his wife and his two sons and their wives are active members of the Grange.

Applying 50 pounds of nitrogen per acre to grass pastures in early spring will permit grazing one to two weeks earlier and may boost forage production 50 to 75 per cent.

BIG SAVINGS!!
STANDARD EQUIPMENT'S BIG GOLDEN SPRING DISCOUNT



COMFORT STALLS



BARN CLEANER

Pay For Themselves First Year Provides Pasture Comfort Comfortable Cows Produce More

Adequate To Any Barn Free Barn Plans Easier To Install Ball Bearings For Longer Life

STANDARD EQUIPMENT

See Your Standard Dealer
COPE & WEAVER CO.
WILLOW STREET
Ph. Lanc. EX 3-2824

ALSO VENTILATING SYSTEMS
BULO UNLOADERS
PEN COLUMNS
WINDROWS
FEED TRUCKS
WHEAT TABLES

Place your order NOW for **GENETIC GIANT.**

GENETIC GIANT HYBRID CORN—largest ears; deepest kernels; highest yields.

GENETIC GIANT red-seeded HYBRID GRAIN SORGHUM—new and better; produces larger yields.

GENETIC GIANT "Sweet Stalk" FORAGE SORGHUM—best forage crop; more tonnage with high sugar content.

Plant **GENETIC GIANT** for **EXTRA YIELDS BIGGER PROFITS**

FARMERSVILLE EQUIP. CO.

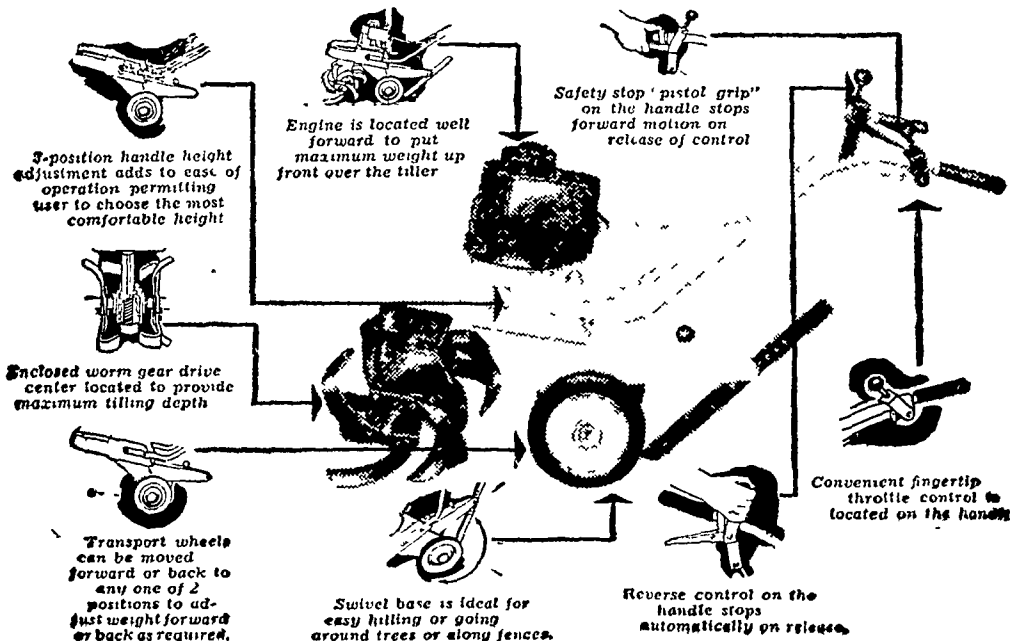
Ephrata, R. D. 2

Ph. EL 4-9221

LOOKING FOR A RUGGED TILLER???

SEE THE NEW **MOTO-MOWER**

MOTO-MOWER'S NEWEST ENGINEERING ACHIEVEMENT — THE WORKHORSE OF ALL TILLERS. ELIMINATES HEAVY DIGGING AND TIRESOME HOEING . . . ONCE OVER DOES THE JOB. EQUIPPED WITH STURDY BOLOTYPE REPLACEABLE TINES, IT BREAKS UP HEAVIEST OF SOILS, DESTROYS WEEDS BETWEEN ROWS FAST AND EASY. THE PERFECT TILLER FOR THE BACK YARD GARDENER, LANDSCAPE GARDENER OR COMMERCIAL GROWER. THERE'S NO STRENUOUS "PULL-BACK." SAFETY REVERSE MAKES IT EASY TO FREE TILLER OF BINDING OBJECTS SUCH AS ROCKS, ETC. ALSO ALLOWS MAXIMUM MANEUVERABILITY AROUND FENCES AND SHRUBS.



EASY TERMS Ask for a Demonstration

Available in 22" and 32" models

LANDIS BROS., INC.

Manheim Pike

Lanc. EX 3-3906

MEYER Saves the Leaves



MEYER Hay Conditioner Model No. 675

Leaves Stay on Stems when SLOW ROLLED

MEYER Conditioning Rolls revolve slower . . . because they are fed by an exclusive, separate pick-up — and do NOT rely on high speed in order to pick up the hay. When high speed rolls are used, hay is grabbed up and forced through . . . leaves are lost. With the MEYER, the hay is lifted and fed through the slower-moving rolls which thoroughly but gently crack the entire stems without crimping and gently press the leaves. The leaves a MEYER saves put more dollars into your pocket, yet MEYER is priced lower.

Condition while you cut. Use your own mower with Model 675, or get Model 680 with built-in-mower, a MEYER patented feature. Model 205, without separate pick-up, is for use on smooth, rock-and-terrace-free fields. Does superior job to crimper-type machine.

MEYER — maker of famous MEYER elevators — is the original and oldest manufacturer of hay conditioners — with over five years more experience than all other makes.

J. PAUL NOLT

LINCOLN HIGHWAY, GAP