

**● Pennies For Profits**

(Continued from Page 15)

is thoroughly cool, frost with butter cream frosting. If desired, decorate with candied orange peel. Makes 8 servings

**FUDGY MINT TARTS**  
Crust

1-½ cups sifted all-purpose flour  
1 teaspoon salt  
¾ cup shortening  
1 cup rolled oats (quick or old-fashioned, uncooked)  
6 to 8 table-spoons cold water

**Filling**

One 15-ounce can sweetened condensed milk  
½ teaspoon salt  
One 6-ounce package semi-sweet chocolate pieces  
1 teaspoon vanilla  
¼ teaspoon peppermint extract  
2 table-spoons flour  
2 egg yolks  
2 egg whites  
2 table-spoons sugar

Heat oven to moderate (350 degrees). For crust, sift together flour and salt. Cut in shortening until mixture resembles coarse crumbs, stir in oats. Add water gradually until mixture holds together

Form dough in a ball; divide into 10 parts. Roll each on lightly floured board to form 5-inch circle. Fit into tart shells; flute edges.

For filling, slowly heat milk and salt, stirring occasionally; do not boil. Remove from heat, add chocolate pieces, stirring until melted. Beat in flavorings and flour. Add egg yolks one at a time, beating thoroughly after each addition. Cool slightly, beat egg whites until foamy; gradually add sugar, beating until stiff and glossy. Fold into chocolate mixture. Pour filling into tart shells. Bake in preheated oven (350 degrees) 25 minutes or until firm. Serve warm or cool with whipped cream or ice cream. Makes 10 tarts.

**CREAM CHEESE COOKIES**

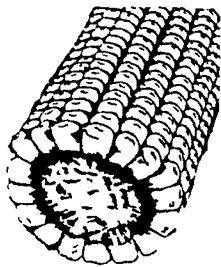
2-¼ pounds sifted cake flour  
2 pounds shortening

2 pounds sugar  
¾ pound cream cheese  
4 eggs  
¼ ounce vanilla  
2-¼ pounds semi-sweet chocolate pieces

Sift flour. Thoroughly blend shortening, add sugar gradually. Add cream cheese mixing until light and fluffy. Add eggs, one at a time, beating after each addition. Gradually stir in flour. Lastly, add vanilla and chocolate. Drop from

More farmers each month prefer to buy their

- HAY ● STRAW
- EAR CORN



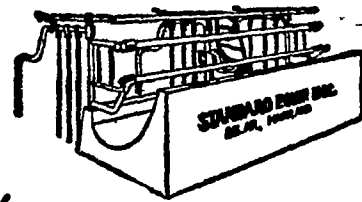
from us for better value and all around satisfaction. At farm or delivered, any quantity as your requirements may be

PHONE STRASBURG OV 7-3211

**Esbenshade Turkey Farm**  
PARADISE, PA.

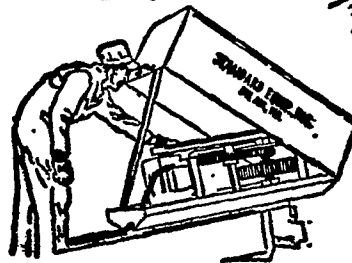
**BIG SAVINGS!!**  
STANDARD EQUIPMENT'S BIG GOLDEN SPRING DISCOUNT

STANDARD'S "Easy-All"



COMFORT STALLS

STANDARD'S "Mighty-Move"



BARN CLEANER

Pay For Themselves First Year Provides Pasture Comfort Comfortable Cows Produce More

Adaptable To Any Barn Free Barn Plans Easier To Install Ball Bearings For Longer Life

STANDARD EQUIPMENT

See Your Standard Dealer

COPE & WEAVER CO.

WILLOW STREET  
Ph. Lanc. EX 3-2824

ALSO VENTILATING SYSTEMS  
SILO UNLOADERS  
FEED COLUMNS  
WINDMILLS  
FEED TRUCKS  
UTILITY TABLES

**COWS PROPERLY CONDITIONED ... during the dry period PRODUCE UP TO 25% MORE MILK!**



**BEFORE CALVING** This cow was fitted on the Pioneer program for 60 days before calving. Note the excellent "dry cow" body condition.

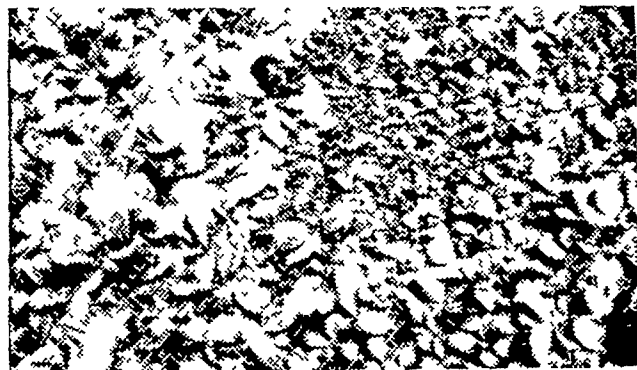


**AFTER COMPLETING RECORD** The same cow after having produced 23,044 lbs. of milk and 941 lbs. of fat as a 4 year old. Note the extreme dairyness and exceptional body condition shown after this cow produced 11½ tons of milk!

**600 pounds of PIONEER DRY and FRESHENING yields an extra TON OF MILK!**

Proper feeding of the dry cow is the most important single factor affecting herd health, longevity, and a sustained high level of milk production. In 60 days, while the cow is dry, Pioneer Dry and Freshening feed will repair the body from the previous lactation, build a reserve of body condition for the next lactation, and develop a stronger calf. In addition your cows will have less calving difficulties, eliminate placenta quickly, have less udder congestion, and most importantly they will produce up to 25% more milk!

See us today for full particulars.



Well-started tobacco plants (left) will stand up better after transplanting.

**Easy Way to Grow Sturdy Tobacco Plants**

For top quality, sturdy tobacco plants, use the proven combination of plant foods, Agrico for Tobacco Plant Beds and Agrinite. Apply 2-3 lbs Agrico for Tobacco Plant Beds per pan before steaming. Just before sowing the seed broadcast and rake in 2-3 lbs Agrinite per pan. This gets your plants off to a quick start with a stronger root system and better able to resist disease. Your plants will be ready for the planting earlier if you topdress the beds with 3-4 lbs Agrite per steam pan when the plants are about the size of a dime. Agrinite, the slow releasing, all organic nitrogen fertilizer - gives a healthy green color, promotes vigorous plants with well developed roots. This means your plants will be ready earlier and will stand up better after transplanting.



**AGRINITE.**

The American Agricultural Chemical Co.

Contact Your AGRICO Agent or AGRICO Warehouse at Lancaster R. D. 3 — LO 9-2361 or Narvon R. D. 2 or

Call Sales Representative **B. G. HOFFMAN** Elizabethtown EM 7-1650

**Joseph M. Good & Sons**

LEOLA — QUARRYVILLE