

Farm Women 15 Hold Covered Dish Luncheon

A covered dish luncheon was a feature of the all day meeting of Farm Women Society 15 this week in the home of Mrs Kathryn Shoemaker, Christiana. The members met to sew cancer pads for the Lancaster unit of the American Cancer Society.

At a recent meeting in the home of Mrs Erma Witmer Quarryville, Miss Jean Cutler, the Solanco High School student sponsored by the society in the Miss Solanco Pageant entertained with a monologue.

A donation of \$25 was made toward medical treatment of a local child. Members decided to make the scholarship fund its project for the year.

Plans were discussed for a bake sale on May 18 at 2 p.m. in front of Wiley Howett's Quarryville. On April 10 members will sew at the Lancaster General Hospital.

The ways and means committee announced that fund-raising projects include the a "bag sale" to be held at sale of vanilla and pepper and family night in August. A luncheon and fellowship night is planned for June 28 at the Cole-rain Baptist Church Grove.

Mrs Lillian Adams presided. Mrs Lillian McCrabb led devotions. Roll Call was answered by A Blunder. I Made

Farm Women 23 Plan Banquet

Invitations are out for the 10th anniversary banquet of Society of Farm Women 23 to be held on Saturday, April 21, at 6:30 p.m. at Kauffman's Tea Room, East Petersburg.

Henry Hackman, who will present an illustrated lecture on his trip to Poland, will have the feature spot on the program. His Polish host will be a guest.

Mrs Howard Shaub is program chairman, and Mrs Charles Frey is social chairman for the banquet.

Plans were made Thursday at a meeting at the home of Mrs Jay Charles, Washington Boro R1. Members voted to donate \$5 to the 4-H International Farm Youth Exchange fund and made plans to send \$120 for the support of a Korean orphan for one year.

A donation of food was made to the Millersville Mennonite Children's home.

The society will be entertained by society 20 at Christiana in June.

As a "Bride" Refreshments in the theme of St. Patrick's Day were served by Mrs Witmer, Mrs Mary Boyce, Mrs McCrabb and Mrs Gertrude Wecksel.

The next meeting will be held Thursday, April 19, at 2 p.m. at the home of Miss Sara Holmes, Andrews Bridge.

Farm Women 12 Spelling Bee Is Backwards Home

A "Backwards Spelling Bee" was held by the Society of Farm Women 12 in the home of Mrs Lester Sigmon, Lancaster R6, recently Mrs Irene Benedict was co-hostess.

In the spelling bee, contestants were required to spell the assigned words backwards. Eugene Frey, principal of the Conestoga Township Elementary School was in charge of the contest. First place was won by Mrs Clarence Witmer with Mrs Raymond Aston, second and Mrs Willis Ghick, third.

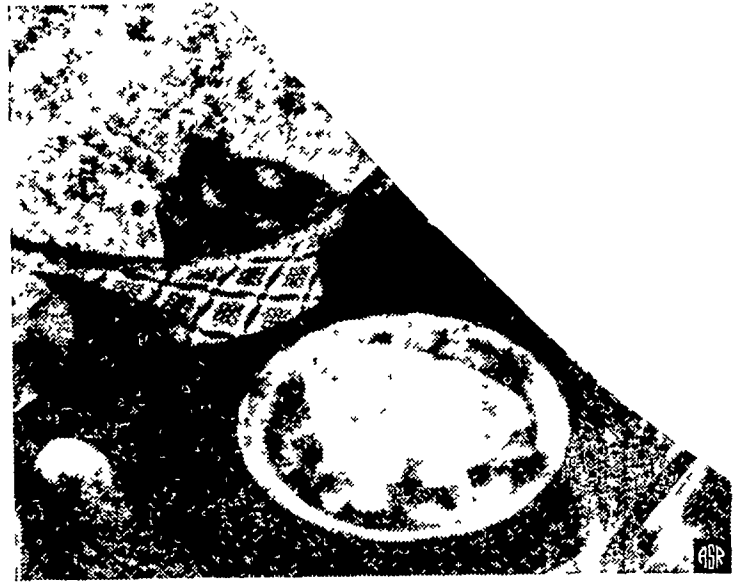
The group voted a contribution to Meals For Millions. The Lancaster County Society for Crippled Children and Adults and the 4-H International Farm Youth Exchange.

Farm Women 9 Sew Cancer Pads

Cancer dressings were made at the recent meeting of the Society of Farm Women No 9.

The meeting was held in the home of Mrs Almeda McClenaghan, Holtwood R2 with Mrs Clyde Dunkle as co-hostess.

The group voted to make a donation of \$10 to the 4-H International Farm Youth Exchange, and \$5 each to the Cancer Society and the Lancaster County Society for Crippled Children and Adults.



This "new fashioned" fruit cobbler combines the delightful taste surprise of plump raisins with the sweet tang of apples. The dough is quickly made with biscuit mix, then sprinkled with a crumbly topping that becomes crunchy and brown as it bakes. It's an easy, delicious dessert that's homemade good.

Crunchy Raisin Apple Cobbler

- 1/2 cup dark or golden raisins
- 4 cups thinly sliced cooking apples
- 3/4 cup water
- 3/4 cup sugar
- 1 tablespoon flour
- 1/2 teaspoon cinnamon
- Dash of salt
- Biscuit Dough
- Crumbly Topping

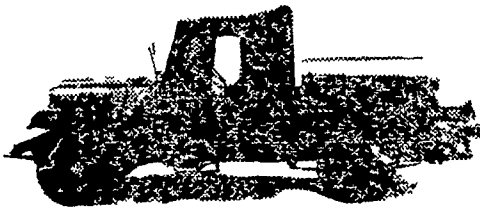
Combine raisins, apples and water; heat to boiling. Blend together sugar, flour, cinnamon and salt. Stir into boiling fruit and boil one minute. Turn into 8 1/2-inch round baking dish. Cover with dough and sprinkle with topping. Bake in hot oven (400 degrees F) 30 minutes, or until crust is browned and apples are tender. Makes 6 to 8 servings.

Biscuit Dough Combine 1 cup biscuit mix and 1 tablespoon sugar. Stir in 1/4 cup milk and 2 tablespoons melted butter or margarine. Pat to circle on floured board, and roll to fit top of dish.

Crumbly Topping Mix 2 tablespoons biscuit mix, 1 tablespoon granulated sugar and 1 tablespoon soft butter or margarine together until crumbly.

NITROGEN

SERVICE



WE WILL TOP DRESS YOUR

- Pasture
- Small Grain
- Grass, Hay & Forage

WITH: UREA—Ammonium Nitrate or Cyanamid
ALSO—BROADCAST to Plow Down For Corn

EXpress 2-4963

ORGANIC PLANT FOOD CO.

GROFFTOWN RD. Next to the Waterworks

K-137 KimberCHIKS

10¢ to 34¢ MORE NET INCOME THAN OTHER MAJOR EGG STRAINS*

(35¢ more than average entry in 15 tests)

*Based on final reports in 1959-60 Random Sample Tests in Ariz., B.C., Calif., Fla., Ia., Minn., Mo., C.N.Y., W.N.Y., N.C., Pa., Tenn., Tex., Utah, and Wis.

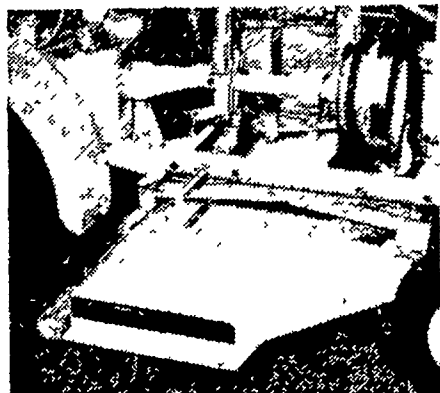
In the three 1959-60 tests in which the new K-155 Kimberchik was entered, it equalled the well-known K-137 in net income.

Longenecker's Hatchery

ELIZABETHTOWN, PA. Empire 7-1545

lick lawn-cutting work!

PANZER Rotary or Reel Mowers manicure lawns swiftly



PANZER Rotary has 36" cut, features new 3 blade design. Cutting heights from 1" to 4", rollers prevent scalping. Spring-loaded belts require no adjustment. Powered directly from engine. Reel Unit trims acres fast with 60" cut. Learn how PANZER gives you finest compact tractor performance. Call for a home demonstration today!

LANDIS BROS., Inc.
MANHEIM PIKE LANCASTER, PA. EX 3-3906

BIG SAVINGS!!

STANDARD EQUIPMENT'S BIG GOLDEN SPRING DISCOUNT

STANDARD'S "Mighty-Move"

BARN CLEANER

STANDARD'S "Easy-All"

COMFORT STALLS

Pay For Themselves First Year
Provides Pasture Comfort
Comfortable Cows
Produce More

Adaptable To Any Barn
Free Barn Plans
Easier To Install
Ball Bearings For Longer Life

STANDARD EQUIPMENT

See Your Standard Dealer

GLENN H. HERR
MANHEIM R. D. 1
Lancaster, PA. TW 8-7444

ALSO VENTILATING SYSTEMS
PEN-COLLING
WINDOWS
FEED TRUCKS
UTILITY TABLES