

## Agricultural Stabilization And Conservation Service Shares On Many Approved Practices

### AGRICULTURAL CONSERVATION PROGRAM

A total of 664 farmers were enrolled and completed practices under the 1961 Agricultural Conservation Program Practices were completed on a cost-shares basis and paid as follows:

| PRACTICE  | UNITS             | AMOUNT      |
|---|-------------------|-------------|
| Lime  | 5457.8 acres      | \$22,943.72 |
| Establishing permanent cover                            | 2023.3 acres      | 24,981.61   |
| Improving established cover                             | 3450.1 acres      | 26,454.95   |
| Establishing permanent cover on ditch banks, dams, etc. | 25.3 acres        | 870.06      |
| Winter cover crops                                      | 4367.8 acres      | 6,660.61    |
| Contour strip cropping                                  | 2266 acres        | 11,266.67   |
| Clearing and leveling pasture land                      | 58 acres          | 693.50      |
| Constructing farm ponds                                 | 2                 | 661.45      |
| Establishing sod waterway                               | 141,000 lineal ft | 1,137.24    |
| Constructing terrace                                    | 3,414 lineal ft   | 204.84      |
| Constructing diversion terrace                          | 9,998 lineal ft   | 1,959.73    |
| Constructing open drainage system                       | 10 acres          | 569.87      |
| Constructing underground drainage                       | 48,656 lineal ft  | 6,380.69    |
| Planting trees  | 3 acres           | 16.00       |
| Fencing planted trees                                   | 100 rods          | 80.00       |

### CONSERVATION RESERVE PROGRAM

Under the Conservation Reserve Program of the Soil Bank 65 farmers received \$46,212.11 in annual payments for maintaining land taken out of production and put in permanent cover.

### WOOL INCENTIVE PROGRAM

Payments were made in July of 1961 for wool and lambs sold during the 1960 marketing year. A total of 123 producers received \$5311.31 for shorn wool, and 68 producers received \$823.58 for unshorn lambs sold.

### WHEAT ALLOTMENTS AND MARKETING QUOTAS

A total of 6,157 wheat allotments were established and marketing cards were issued to all eligible producers. Eight farmers signed feed wheat agreements to grow in excess of their allotment and feed all wheat on the farm.

### PRICE SUPPORT PROGRAMS

In the wheat program 177 farmers received \$100,190.31 through warehouse loans and five farmers were paid \$4,212.18 through farm-stored loans. Two corn farmers received \$1,638.16 through farm-stored loans.

### 1961 FEED GRAIN PROGRAMS

A total of 356 producers enrolled in the 1961 feed grain program and received \$189,492.04 for diverting corn acreage to soil conserving uses.

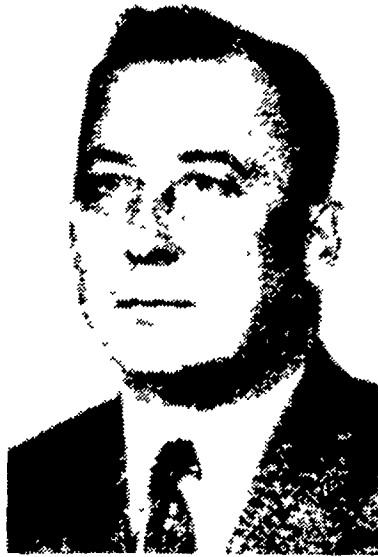
Approval was granted for constructing one farm storage facility for \$5,120.00 and one loan for \$4,417.50 for mobile drying equipment.

## Conservationist Is Appointed, Office Moved

Ralph Hunter, formerly Area Conservationist from the Southwestern Area of Pennsylvania, has recently been transferred to the Southeastern Area.

The Southeastern area includes Lancaster County although the office is located in Lebanon.

Headquarters were recently moved from West Chester to the present location, which is more central to the district, in an effort to cut to a mini-



RALPH HUNTER

mum the travel of personnel serving various soil conservation offices.

Hunter, who replaces Howard Busch, has had many years of experience with the Soil Conservation Service.

"In fact his experience dates back past one quarter of the

## Soil Conservation District Directors List Achievements

The activities of the Lancaster County Soil Conservation District Directors were varied and numerous during 1961. Following is a list of activities compiled by Henry Givler, secretary of the district.

1. Herbert Wiggins, Millersville was elected Outstanding Conservation Farmer of the county.

2. A total of 224 members attended the annual banquet in Ephrata.

3. Adopted the resolution of the County Commissioners designating May 7-14 as Soil Stewardship Week.

4. A television program was presented during Soil Stewardship Week.

5. A tour of county farms was held for the County Commissioners.

6. Director Chairman Amos Funk served as state second vice president.

7. The second annual plowing contest was sponsored by the district on the Roy Garber farm. More interest was shown

century." Said Ivan McKeever State Conservationist in announcing the appointment of Hunter, "I am sure you will find the new Conservationist for the Southeastern Area very capable and willing to assist your district to move ahead whenever the services of our organization can be helpful." McKeever said.

Busch has accepted the position of assistant State Conservationist in the state of Indiana.

this year as five contestants participated and 80 to 100 spectators were on hand. Christ Miller, Elizabethtown RD was county winner and was sponsored by the district in the state contest.

8. The second annual field day was held on the farm of Gerald Darlington, Lutz R2.

9. The district sponsored a teacher scholarship for the Conservation Laboratory during the summer.

10. Four watershed meetings were held at Manheim, White Horse, Bart and New Holland.

11. A district representative attended meetings and participated in the programs of the Lancaster County Agricultural Council.

12. The district sponsored a contest for the Associate Directors to sign up new members.

13. The district approved the building of the Silt Sampling station on the Conestoga creek.

14. Directors acted as guides for the Louisiana Bankers tour of the county.

15. District sponsored seven television programs.

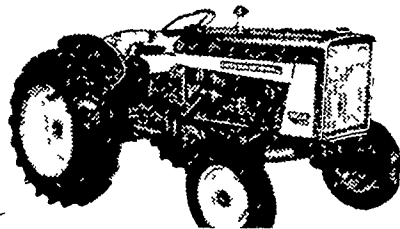
16. Sponsored a workshop for Associate Directors in association with the Lancaster County Planning Commission at which Bicklev Foster Planning Director was the speaker.

17. Farmer cooperators in the county now totals 2,014.

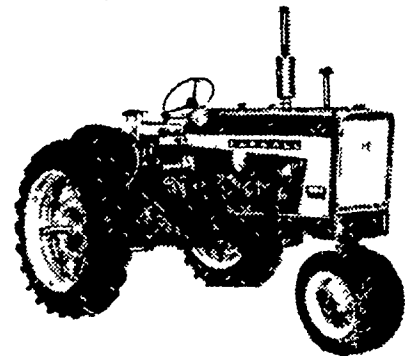
18. Road signs were erected on routes 322, 30, 230 and 441.

**NEW for '62!**  
Farmall and International TRACTORS

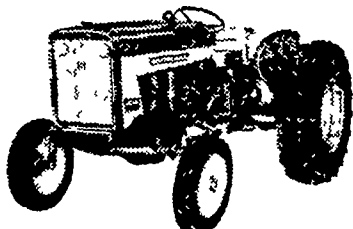
# From... INTERNATIONAL HARVESTER



International 504

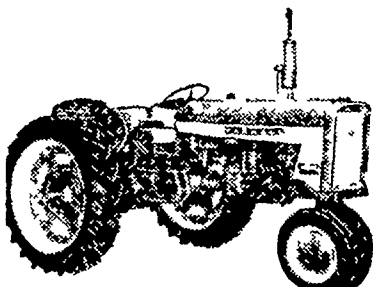


Farmall 504



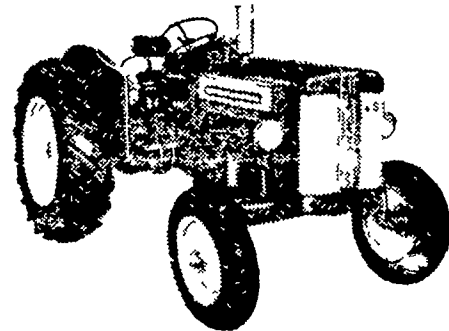
International 404

- NEW 3 - point draft - controlled hitch
- NEW versatile, fast - acting hydraulic system
- NEW dual-range transmission - 8 speeds forward-2 reverse




Farmall 404

- NEW 35 H.P.
- NEW 3 - point draft controlled hitch
- NEW all - purpose "live" hydraulic system
- NEW 4-cylinder gas, or Diesel engines
- NEW heavy-duty adjustable front axle



International B-414

SEE WHAT ELSE IS NEW FOR '62!  
• TRACTORS - 5 NEW MODELS • CULTIVATORS • COMBINES • LOADERS • PLOWS  
• FIELD HARVESTERS • SPRING HARROWS • MOWERS  
WATCH FOR YOUR LOCAL IH DEALER'S OPEN HOUSE DATE!

|   |   |   |  |
|---|---|---|--|
| <br><b>C. B. Hooper</b><br>INTERCOURSE<br>SO 8-3501<br>OPEN HOUSE MAR. 7 & 8 | <b>J. Paul Nolt</b><br>GAP<br>HI 2-4183<br>OPEN HOUSE MAR. 17 | <b>C. E. Wiley &amp; Son</b><br>Quarryville - Wakefield<br>ST 6-2895<br>OPEN HOUSE MAR. 9 | <b>Kauffman Bros.</b><br>MOUNTVILLE<br>AT 5-9151<br>OPEN HOUSE MAR. 14 |
| <b>Cope &amp; Weaver Co.</b><br>WILLOW STREET<br>EX 3-2824  | <b>David Kurtz</b><br>MORGANTOWN<br>AT 6-5771                 | <b>J. B. Hostetter &amp; Sons</b><br>MOUNT JOY<br>OL 3-3721                               | <b>McCormick Farm Equip. Store</b><br>EPHRATA<br>RE 3-2283             |