



NEWLY ELECTED OFFICERS of the Red Rose Dairy Herd Improvement Association are, L to R, Jason Weaver, Quarryville R2, president, Robert Hess, Strasburg R1, vice president, and John Shelly, Manheim R1, secretary. The treasurer of the organization, Jacob Houser, is employed by the board of directors. L F Photo

## Red Rose D.H.I.A. Reorganizes, Accepts Resignation Of Tester

Jason Weaver, Quarryville R2, was elected president of the Red Rose Dairy Herd Improvement Association at the regular reorganizational meeting Monday night in the Farm Bureau Cooperative auditorium.

Weaver, a dairy and poultry farmer near Mechanics Grove in southern Lancaster County, replaces Jay Landis, Lancaster R6, who served the association for one year.

Robert Hess, Strasburg R1, was reelected vice president and John Shelly, Manheim R1, was reelected secretary.

Treasurer of the organization is Jacob Houser, Lampeter. He is not elected, but employed by the board of directors.

In other business, the directors accepted the resignation of James Heri, milk tester in association number four. Heri plans to enter farming as of April 1. No replacement has yet been named.

A complete list of directors and their associations is as follows: Association 1, Ray Bollinger, Stevens R1; 2, Hayes Hastings, Kirkwood R1; 3, John J. Oberholtezer, 171 Newport Road, Leola; 4, Elam B. Beiler, Gordonville R1; 5, Charles G. McSparran, Peach Bottom R2; 6, Irvin Musser, Mt. Joy R1; 7, Graybill Gible, Manheim R3; 8, J. Robert Hess, Strasburg R1; 9, Kenneth A. Skiles, Narvon R2; 10, Lean M. Summers, Gap R1; 11, Jason Weaver, Quarryville R2; 12, Aaron Weaver, Narvon R1; 13, John Shelly, Manheim R1; 14, Robert McSparran, Peach Bottom; 15, Paul B. Hess, Lutz R1; and 16, Charles Tindall, Peach Bottom R1.

Representing the Avshire breed on the board is Eli Martin, Stevas R1. John Breckenman, Kirkwood R1, represents

the Guinsey breed and Arthur Wenger, Manheim R2, is the Holstein representative.

Poultry scientists at the state university say portable brooder houses should be thoroughly cleaned and disinfected before they are moved to their new location in preparation for a new brood of chicks.

Ants — nothing else but ants — comprise the yard-walk's diet. He has to hunt the ants in the dark as he is a nocturnal animal.

Start With The BEST FOR

# EGGS MEAT

DAY-OLD and STARTED CHICKS

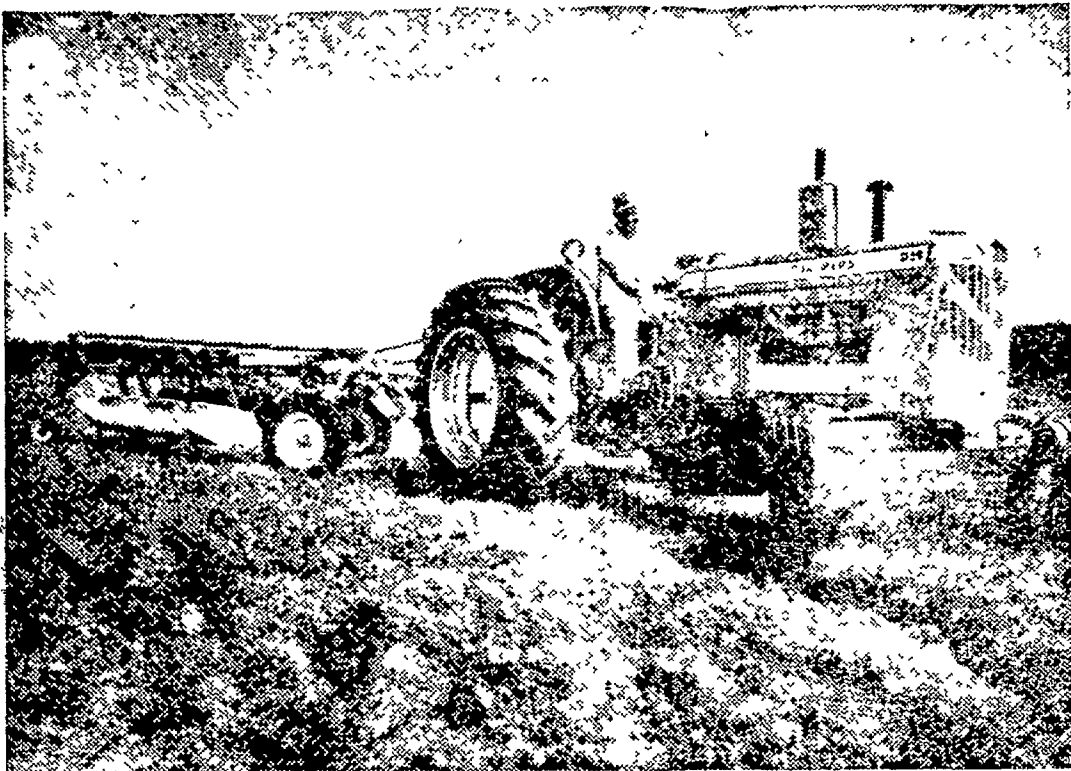
CAREY and DEMLER Leghorns for high-quality White Eggs. Carey again won "Highest Egg Quality" award (85 Haugh Units) competing with best American breeders in official Random Sample Tests.

MERRYKNOLL Black Sex-Links and Anderson Golden Sex-Links for Big Brown eggs. Also Cobb's White Rocks.

FOR MEAT: Cornish-Cobb White Rock Cross and Vantress-Cobb Cross.

Burling personally supervises every step from breeding-flock management to hatching and delivery of YOUR chicks. NEW Folder. CALL OR WRITE "BILL" BURLING OXFORD, PA. Dial 932-8286

now we have it!



# Big New D-19

**Big horsepower** — Up to 70 PTO hp — manufacturer's estimate (corrected). POWER-CRATER gasoline and LP engines or new TURBO-CHARGED diesel.

**Big weight** — Up to 7700 lbs. (with liquid ballast but without wheel weights).

**Big size** — Long and stable for big implements, 12 feet 10 inches from end to end. Big tires (15.5-38, 16.9-34\*, or 18.4-34\*) to handle big jobs. \*Optional at extra cost.

**Big in new comfort** ... and quiet.

POWER-CRATER is an Allis-Chalmers trademark.

Finance for profit. Ask us about Allis-Chalmers' time payment plans.

**ALLIS-CHALMERS**  SALES AND SERVICE

N. G. Myers & Son  
Rheems, Pa.

L. H. Brubaker  
Lancaster, Pa.

Snavelly's Farm Service  
New Holland, Pa.

Nissley Farm Service  
Washington Boro, Pa.

Grumelli Farm Serv.  
Quarryville, Pa.

L. H. Brubaker  
Lutz, Pa.

**FLORIN**  
Replacement  
Pullet Feeds



Offer You

**Complete, Economical Programs**

From Day Old Chicks  
To Mature Pullets

- Florin Chick Starter
- Florin Growing Mash
- Florin Gro-All
- Florin Gro-Mor Pellets

We would be happy to help you develop a program to suit your individual needs.

FOR MORE DETAILS CALL  
MOUNT JOY OL 3-2411

**Wolgemuth Bros., Inc.**  
FLORIN PENNA