

● **Soils Day**

(Continued from Page 1)

control becomes a serious problem. Not only do weeds become the limiting factor as concerns yields they also increase costs of production.

Attrazine gave exceptionally good control in field crops last year, he said.

Switching to the problem of weeds in forage crops, Berggren said the winter weeds which caused so much trouble in new seedlings last season should be less of a problem this spring. "The winter annual weeds are experiencing a more rigorous winter," he said.

However, it weeds do become a serious problem in the first cutting of a new grass or legume seeding, Berggren recommends putting the crop into the silo where the seeds will become sterile.

One of the weeds to watch according to Berggren is nut grass. Nut grass is becoming increasingly serious, Berggren believes and control is not

easy. Eptam is showing good results, he said, but it is still expensive to use and it is relatively short-lived. The residual effect of Eptam is noticed only six to eight weeks as compared to six to eight months for Attrazine.

Berggren said, 2-1-D and the old cultivator still have a place in weed control even with some of the newer chemicals. However, Berggren said many farmers work their corn ground too much. Surveys show most Pennsylvania farmers work their soil three to 11 times before planting. "A corn seed bed does not have to look like a lettuce bed," he said.

Berggren said there is a trend toward minimum tillage in the state in an effort to cut down on production costs.

James H. Eakin, Extension Agronomist from PSU said the new soil test reports should get the results back to the farmer quicker than before.

Furthermore, he said the new reports give the farmer

the opportunity to make his own fertilizer recommendations, and will let him change his mind as to crop to be planted.

The new reports are much more flexible, in that no blanket recommendations are made. Test results are given in "low", "medium" and "high" and the grower figures fertilizer amounts from a table.

Eakin said "A farmer should be as well informed about the fertility level of his fields as he is about the production of his cows."

Eakin recommended a 1-1-1 ratio fertilizer on tobacco ground where soil tests show a high level of Potassium. The extra Nitrogen in a grade such as 10-10-10 should prove beneficial on both quality and high yield.

John Sherk II, Willow St R1, Mahlon Sherk, Holtwood R2, and Galen W. Crouse, Stevens R1, received the ribbons won last fall in the District Hay Show at Hershey.

Awards were presented to the 25 participants in the five

**Game Lands Maintained In The County**

The following is an accomplishment report by the Pennsylvania Game Commission, showing work completed in Lancaster County during the past year.

On the four Farm-Game Projects there are 294 coop-

acre corn contest sponsored by the Agriculture Extension Service and the Pennsylvania Crop Improvement Association. Seven growers received blue ribbons for yields over 150 bushels per acre. Eighteen growers had 125 to 149 bushels per acre. They received red ribbons. High yield of 170.2 was made by Fred Frey, Quarryville R2.

Anne Lueck, Assistant County Agent was in charge of the meeting. Clayton Sanguet, Lititz R2 was master of ceremonies.

erating farmers with a total of 27,893 acres.

Seven farms with 475 acres were leased in the program. A total of 583 farmers were contacted, 5,800 conifer seedlings were distributed, 600 multiflora rose seedlings were distributed, and 1,500 conifer seedlings were planted.

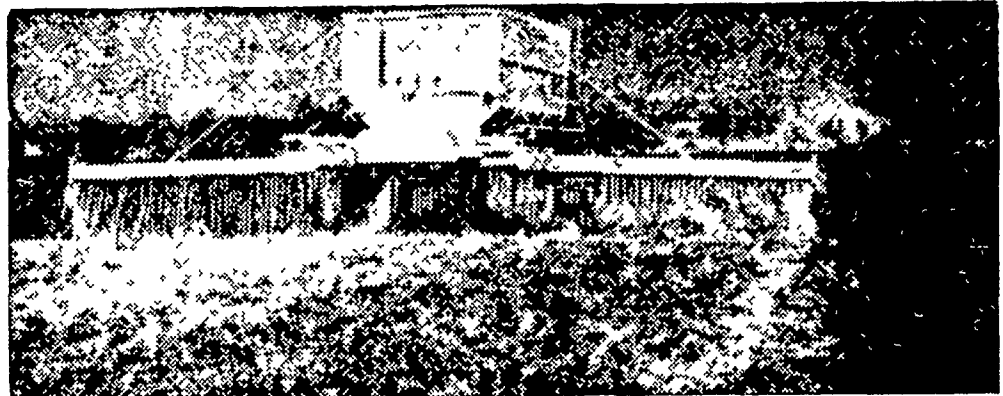
There are five tracts of State Game Lands in Lancaster County. These are located in Clay, Brecknock, Colerain, Penn and West Cocalico Townships and comprise a total of 5,506 acres.

On the game lands, 14 acres of woodland borders were cut and 12 acres were recut. Twelve miles of roads were maintained, seven acres of thistles were removed and 3 1/2 acres of forest trees were thinned.

The report was submitted by T. A. Reynolds, Supervisor of the Southeast Division. District game protectors in the County are S. C. Mace, J. P. Eicholtz and W. E. Woodring.



**MARTIN'S LIMESTONE**



Order your Limestone now for even spreading by our modern spreaders. Quick Service. Free Soil Tests. Quality Limestone. SPREAD IT NOW ON FROZEN GROUND.

**Ivan M. Martin, Inc., Blue Ball, Pa.**

Telephones: New Holland ELgin 4-2112, Terre Hill Hillcrest 5-3435, GAP Hickory 2-4148.

**Arriving Soon!**

Another Car of **MICHIGAN PEAT**

Off-the-Car Price **Jumbo Bag 80lb. \$1.00**

Place your order now and we will notify you of arrival date.

This unheard of price good to any reader of this paper until March 17.

Delivered Price also available

Free Landscape designing

Stauffers Start With Service —

End With Satisfaction

**STAUFFER'S Nursery & Garden Center**

A-top Kissel Hill, 1/2 mile south of Lititz

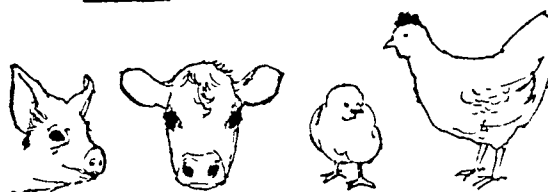
On Route 501

Ph. MA 6-6890 or 6-7163

**OPEN THE DOOR ON MORE PROFIT**

**GIVE YOUR ANIMALS A BETTER START...WITH**

**Early Nutrition**



Early Nutrition gets your young off to a fast start toward a good finish. Chicks, poults, pigs and calves — given the proper foods for rapid growth to minimize the slow down effects of stress periods will grow fatter and stronger than those that don't have the advantages of proper foods early in life. Early Nutrition pays off for you because you get more profit back for the dollars you invest in fast working, early-growth feeds.

**Red Rose FARM FEEDS**

Joseph M. Good & Son, 117 Newport Road, Leola, Pa.

David B. Hurst, Bowmansville, Pa.

J. C. Walker & Son, Inc., Gap, Pa.

Walter & Jackson, Christiana, Pa.

Chas. E. Sauder & Sons, R. D. 2, East Earl, Pa.

A. L. Herr & Bro., Quarryville, Pa.

I. B. Graybill & Son, Refton, Pa.

Elverson Supply Co., Elverson, Pa.