

Price Softer, Volume Up

Broiler prices dropped back about a cent and a quarter per pound from the previous week at the February 15 auction at the Lancaster Poultry Center.

Volume was well maintained as 101,825 head in 21 lots crossed the block at prices of 17.6 to 17.9 for a sale average of 17.93.

Only two lots of broilers, each containing 3,250 head, failed to sell, these were bid to 17.6 and 17.8.

Three lots containing 2,350 roasters brought from 30.1 to 24.3 while one lot of 850 pullets sold for 31.6. A lot of 600 leghorn fowl brought 9.7 while two lots of heavy fowl brought 21.8 and 22 cents per pound for the 3,000 head.

The complete sale offered 115,395 head in 31 lots and sold 108,895 head in 29 lots.

Following is the complete sale with lot number, seller, grower in parenthesis, amount and breed, age in weeks and days, buyer and price.

CODE. H Wt - hubbard white mountain, WV - white vantage, C - cockerels, P - pullets, L-F - leghorn fowl, IR - indian river, H-F - heavy fowl.

1 Miller & Bushong (Jo-

nas Meyer), 10,000 H Wt., 9-0, Daniel K. Good, 18.2; 2. M&B (Glenn R. Siegrist), 1,000 WVC, 13-0, H W Longacre, Inc., 34.3. 3. Rbt. Noll, 1,875 WVX, 9-5, John N. Thomas, 19.7; 4. Same, 1,950 WVX, 9-5, Carl B. Risser, 18.5; 5. M&B (Lloyd Stoltzfus), 7,800 WV, 8-6, Island Poultry, 17.8.

6. Same, 8,000 WV, 8-6, V. F. Weaver Co. Inc., 17.7; 7. M&B (John L. Herr), 550 WVC, 12-2, Daniel K. Good, 30.1; 8. Same, 850 WVP, 12-2, Carl B. Risser, 31.6; 9. Same, 800 WVC, 12-2. W. C. Mellinger & Son, 32.2; 10. M&B (Melvin Groff), 3,900 WV, 8-6, Daniel K. Good, 17.8.

11. D. E. Horn (Nevin Flinchbaugh), 5,000 WV, 9-1 Daniel K. Good, 17.8; 12. Aaron Shank, 5,000 WV, 9-2 John N. Thomas, 18.1; 13. Same, 5,800 WV, 9-2, Daniel K. Good, 17.9; 14. Same, 500 L-F, Starr Poultry, 9.7; 15. Garden Spot Broilers (Melvin Barge), 3,400 WV, 9-0, H. W. Longacre, Inc., 17.8.

16. Same, 3,200 WV, 9-0, V. F. Weaver Co. Inc., 17.7; 17. Same, 2,600 WV, 9-0, Roy E. Ream, 17.8, 18. Same, (Turn to page 2)

Prices Advance About 1/4 Cent

Broiler prices advanced approximately 1/4 cent during the 24 hour period ending at 10:30 Friday morning. Delmarva reported prices of 16.7 to 18.7 for 979,400 head at farms during the period.

A fair demand for the moderate supplies was reported. Several processors were reported running at capacity with estimated slaughter by eastern shore processors for the weekend at 876,000 head compared with 653,000 head last week end.

The Delmarva broiler-feed ratio for the week ending on Feb 9 was down three points to 3.9 when broilers averaged 17.96 and mash cost the grower \$92.08 per ton. The ratio for the comparable week a year ago was 4.2 when broilers averaged 19.29 and mash cost \$91.90.

Fluid Milk Increases Noted In All Sections

All areas noted increases in production of fluid milk although reports indicate sections of the New England and New York milkshed remained about the same as the previous week.

Bottling demand reflected little change and continued fair to good.

Supplies were in excess of needs in the Northeast and

Weekly New York Egg Mkt.

From Monday, February 12th to Friday, February 17th

	Mon.	Tues.	Wed.	Thurs.	Fri.
Whites					
Ex. Fcy.					
Hywts		39 1/2-	39 1/2-	39 1/2-	37 3/4-38
Fcy					
Hywts	38 -	38 -	38 -	38 -	35 1/2-36
Fcy					
Med.	36 1/2-	36 1/2-	36 1/2-	36 1/2-	34 1/2-
No. 1 Med.	36 1/2-	36 1/2-	36 1/2-	36 1/2-	34 1/2-
Pullets	33 -	33 -	33 -	33 -	33 -
P-wees	25 -	25 -	25 -	25 -	25 -
Browns					
Ex. Fcy.					
Hywts	39 -	39 -	39 1/2-	39 1/2-	38 1/2-
Fcy					
Hywts	38 -	38 -	38 -	38 -	37 -
Fcy					
Med	36 1/2-	36 1/2-	36 1/2-	36 1/2-	35 1/2-
Pullets	32 -	32 -	32 -	32 -	32 -
P-wees	25 -	25 -	25 -	25 -	25 -
Mixed					
Fcy.					
Hywts	37 1/2-	37 1/2-	37 1/2-	37 1/2-	35 1/2-
No. 1 Med	36 -	36 -	36 -	36 -	34 1/2-
Pullets	31 -	31 -	31 -	31 -	31 -
Stds	36 -	36 -	36 -	36 -	34 1/2-
Checks -	31 1/2-32	31 1/2-32	31 1/2-32	31 1/2-32	31 1/2-32

TREND. Market weaker and highly unsettled, chiefly under the influence of Chicago's sharp decline Thursday, with much freer offerings of top large Friday morning and a curtailment of buying interest.

Copyrighted 1962 By Urner-Barry Co.

diversions to separators and the New York area ranged manufacturing plants were \$5.05 to \$5.15 per 40-quart unit of bottling quality milk.

Wholesale selling price in

Advertisers will be glad to have you mention Lancaster Farming when answering advertisements.

The Answer To Your Egg Profits Moore Farms Ghostley Pearl Chicks Are From 2 Year Old Breeders

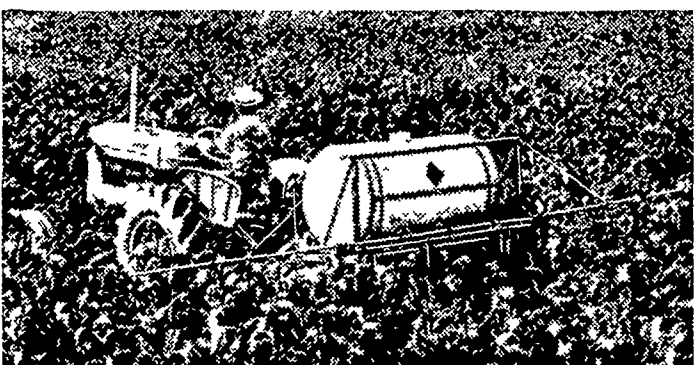


- Better Livability & More Eggs
 - High Interior Egg Quality
 - Large Eggs at Early Age
 - More Eggs with Less Feed
- ALSO STARTED PULLETS

MOORE FARMS

780 EDEN ROAD LANCASTER LO 9-0416

NEW SPRAYERS...



WITH BIG ACREAGE DURABILITY

Here is a completely new Allis-Chalmers sprayer line, built to withstand chemical corrosion and hard service. Booms, up to 33 feet wide, are made of special resistant alloy aluminum with tough chip- and dent-proof nylon in nozzle eyelets and caps. Double nylon roller pumps are offered in two sizes. A 6-roller model develops up to 250 pounds pressure. An 8-roller model, with pressures up to 350 pounds, provides ample capacity to handle long booms and to provide agitation for wettable powder sprays. Allis-Chalmers models include the heavy-duty trailer type shown above, rear-mounted boom sprayer, a broadcast model, and a tool bar-carried unit.

See the difference that Allis-Chalmers quality now brings to spray equipment.

Finance for profit. Ask us about Allis-Chalmers time payment plans.

Get the dollar-making difference with

ALLIS-CHALMERS SALES & SERVICE

N. G. Myers & Son
Rheems, Pa.

L. H. Brubaker
Lancaster, Pa.

Snavelly's Farm Service
New Holland, Pa.

L. H. Brubaker
Lititz, Pa.

Nissley Farm Service
Washington Boro. Pa.

Grumelli Farm Serv.
Quarryville, Pa.

SHAVINGS

HAROLD B. ZOOK

220 LAMPETER ROAD LANCASTER, PA.
PHONE EX 4-5412

- CLEAN DRY PINE
- SEMI DRY PINE
- MIXED

BAGS OR BULK — DELIVERIES OVER 2 TON AND TRAILER LOAD PRICES

BUY

WIRTHMORE



32% DAIRY

and get a

GOOD SUPPLEMENT

Plus

- Superior Value of all vegetable protein.
- Increased Therms of net energy.
- Improved texture for easy bulk handling (Results of 2 years of extensive testing)
- Proven Results with Local Herds

See Us For Details

PAUL M. RESSLER & SON

PARADISE, PA. Phone Strasburg OV 7-6292

**MASTER FARMER
RAT BAIT
&
CATTLE LOUSE
POWDER**
Both Guaranteed
to do Their Job
**ORGANIC PLANT
FOOD CO.**
GROFFTOWN ROAD
PHONE EX 2-4963

**Bulk Spreading
Service**
Dealers for—
FERTILIZER and
LIMESTONE
SMUCKER BROS.
Bird-in-Hand
Ph. Leola OL 6-2229

**HONEGGER
Layers**

When Egg prices drop—
Honegger Layers
will
help you
make the most of it!
Because
you get the most
out of them—
HONEGGERS
are the most!
Consistent! Persistent!
Resistant!

J. HOWARD MOORE
307 East Second Avenue
LITITZ, PENNA.
Phone: MADison 6-5408

Windle's Hatchery
COCHRANVILLE, PA.
Phone: Aiglen LY 3-5941